

WAAS CH 77915 W08A	APP CRS 077°	Rwy Idg TDZE Apt Elev	6118 399 403
--	------------------------	-----------------------------	---

RNAV (GPS) RWY 8

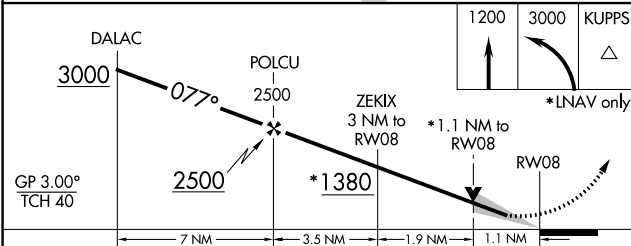
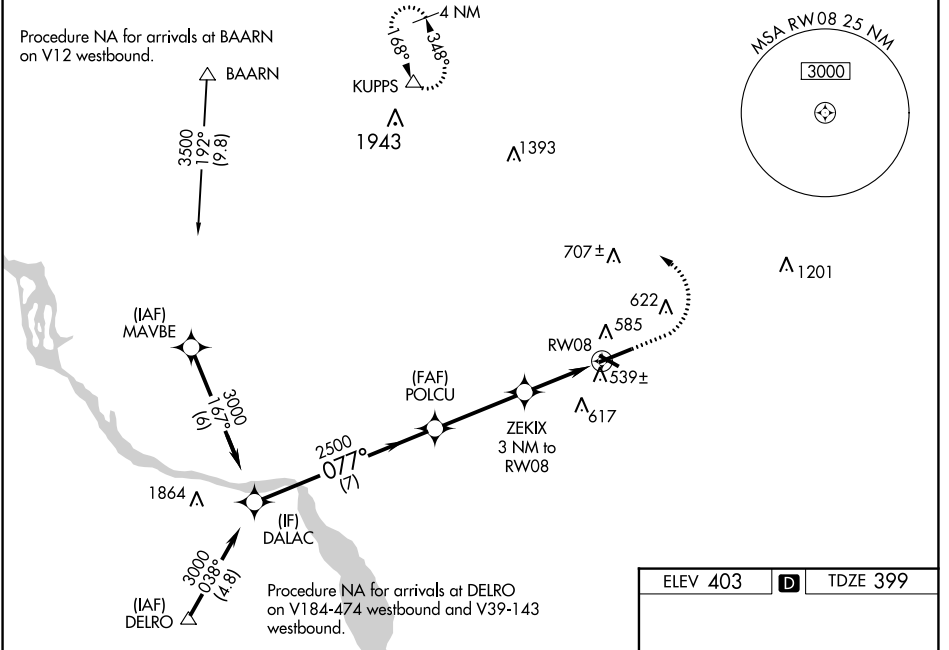
LANCASTER (LNS)

For uncompensated Baro-VNAV systems, LNAV/VNAV NA below -15°C (5°F) or above 54°C (130°F). DME/DME RNP-0.3 NA. When local altimeter setting not received, use Harrisburg Intl altimeter setting and increase all DA 64 feet and all MDA 80 feet, increase LNAV/VNAV all Cats visibility ¼ mile, LNAV and Circling Cats C and D visibility ¼ mile. Baro-VNAV and VDP NA when using Harrisburg Intl altimeter setting. Night landing: Rwy 13, 31 NA. For inoperative MALS increase LNAV/VNAV all Cats visibility to 1 ¼ mile, and LNAV Cats C/D visibility to 1 ½ mile. For inoperative MALS when using Harrisburg Intl altimeter setting, increase LPV all Cats visibility to ½ mile, LNAV/VNAV all Cats visibility to 1 ½ mile and LNAV Cats C/D visibility to 1 ½ mile.

MALS

MISSED APPROACH: Climb to 1200 then climbing left turn to 3000 direct KUPPS and hold.

ATIS 125.675	HARRISBURG APP CON 126.45 281.525	LANCASTER TOWER ★ 120.9 (CTAF) 251.1	GND CON 121.8	UNICOM 122.95
------------------------	---	--	-------------------------	-------------------------



ELEV 403 TDZE 399

REIL Rwy 31
HIRL Rwy 8-26
MIRL Rwy 13-31

NE-4, 26 DEC 2024 to 23 JAN 2025

NE-4, 26 DEC 2024 to 23 JAN 2025