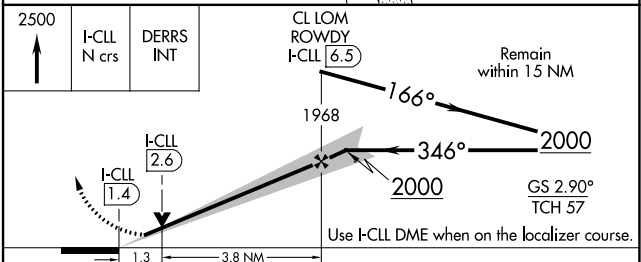
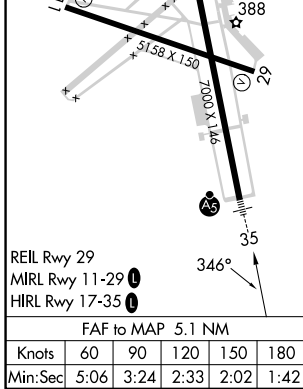
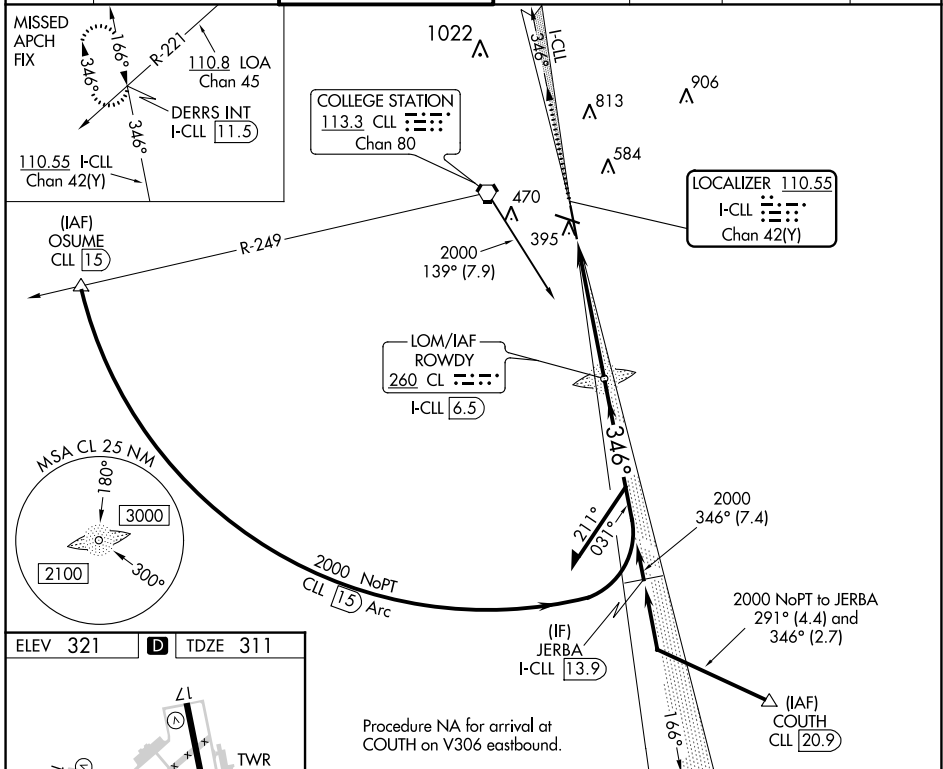


LOC/DME I-CLL 110.55 Chan 42(Y)	APP CRS 346°	Rwy Idg TDZE Apt Elev 6932 311 321
--	------------------------	--

ILS or LOC RWY 35

EASTERWOOD FLD (CLL)

ADF or DME required for procedure entry. ADF or DME required for LOC only.		MALSR 	MISSED APPROACH: Climb to 2500 on I-CLL north course to DERRS INT/I-CLL 11.5 DME and hold.					
<p>▼ For inop ALS, increase S-ILS 35 Cat E visibility to 3/4 SM and S-LOC 35 Cat E visibility to 1 1/8 SM. ILS glideslope unusable for coupled approaches below 1050 feet MSL.</p> <p>▲</p>		ATIS 126.85	HOUSTON APP CON 134.3 360.85	EASTERWOOD TOWER ★ 118.5 (CTAF) 284.7	GND CON 128.7 284.7	CLNC DEL 128.7	CLNC DEL 120.4 (when twr closed)	UNICOM 122.95



CL LOM ROWDY I-CLL 6.5	Remain within 15 NM
2000	GS 2.90° TCH 57
Use I-CLL DME when on the localizer course.	
2500	
I-CLL N crs	DERRS INT
I-CLL 2.6	I-CLL 1.4
1968	1766°
2000	346°
2000	2000
1.3	3.8 NM
CATEGORY	A B C D E
S-ILS 35	511-1/2 200 (200-1/2)
S-LOC 35	760-1/2 449 (500-1/2) 760-7/8 449 (500-7/8)
860-1 539 (600-1)	880-1 559 (600-1)
1000-2 679 (700-2)	1180-2 3/4 859 (900-2 3/4)
1180-3	1180-3

COLLEGE STATION, TEXAS
Amdt 14B 11AUG22

30°35'N-96°22'W

EASTERWOOD FLD (CLL) ILS or LOC RWY 35

SC-5, 26 DEC 2024 to 23 JAN 2025

SC-5, 26 DEC 2024 to 23 JAN 2025