

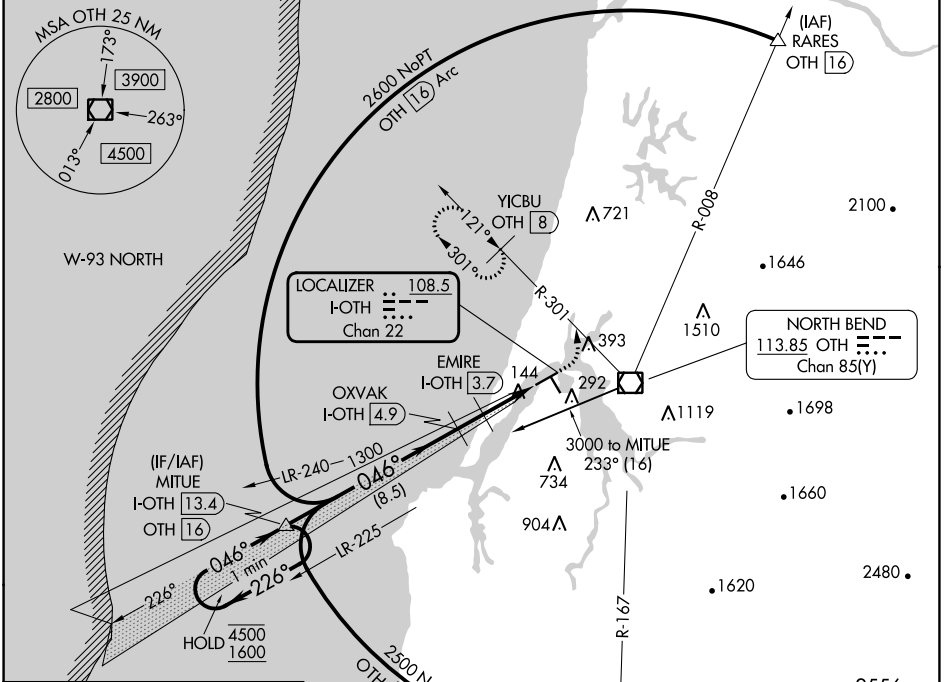
LOC/DME I-OTH 108.5 Chan 22	APP CRS 046°	Rwy Idg TDZE 16 Apt Elev 17	5320
---	------------------------	---	-------------

ILS Z or LOC Z RWY 5

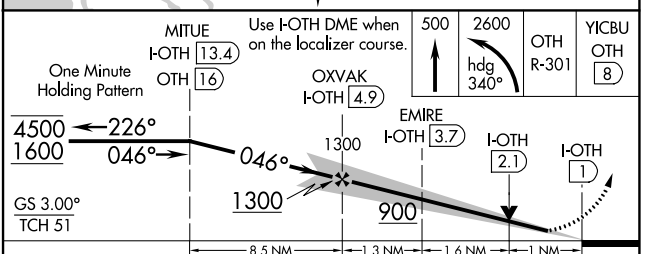
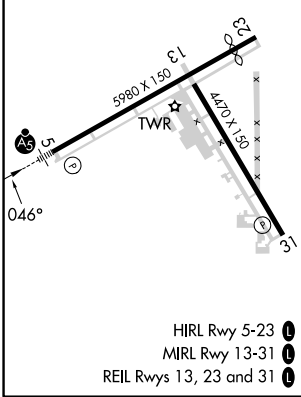
SOUTHWEST OREGON RGNL (OTH)

DME required.	MALSR	MISSED APPROACH: Climb to 500 then climbing left turn to 2600 on heading 340° and OTH VOR/DME R-301 to YICBU/OTH 8 DME and hold, continue climb-in-hold to 2600.
 Circling Rwy 13, 31 NA at night.		

AWOS-3PT 135.075	SEATTLE CENTER 127.55 254.35	NORTH BEND TOWER* 118.45 (CTAF) 0	GND CON 127.1
----------------------------	--	---	-------------------------



ELEV 17	D	TDZE 16
---------	----------	---------



CATEGORY	A	B	C	D
S-ILS 5	216-1/2 200 (200-1/2)			
S-LOC 5	400-1/2	384 (400-1/2)	400-5/8	384 (400-5/8)
C CIRCLING	680-1 663 (700-1)	820-1 803 (900-1)	1080-3 1063 (1100-3)	1160-3 1143 (1200-3)

NW-1, 26 DEC 2024 to 23 JAN 2025

NW-1, 26 DEC 2024 to 23 JAN 2025