

WAAS CH 77805 W23A	APP CRS 231°	Rwy Idg TDZE 141 Apt Elev 142
--	------------------------	---

RNAV (GPS) RWY 23

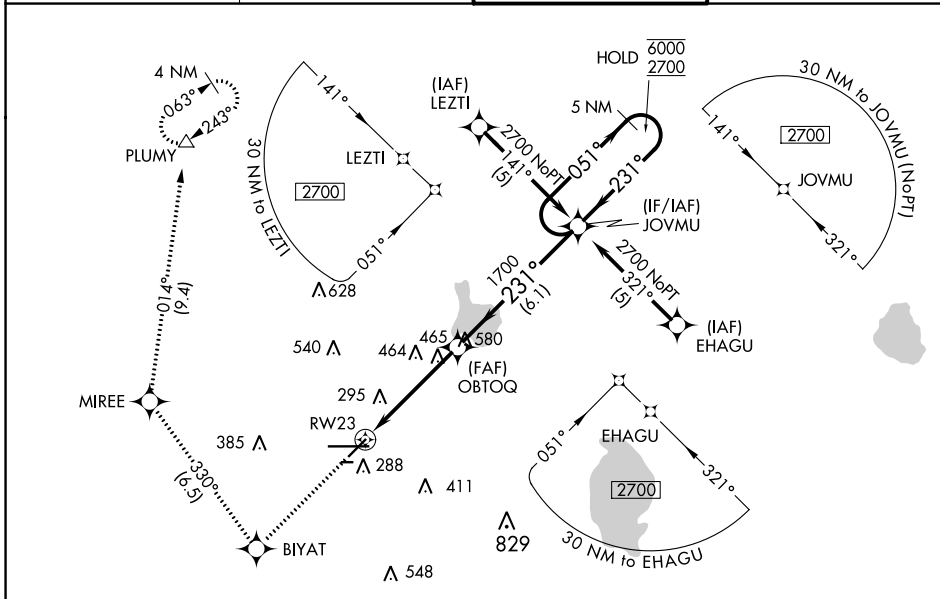
LAKELAND LINDER INTL (LAL)

RNP APCH.

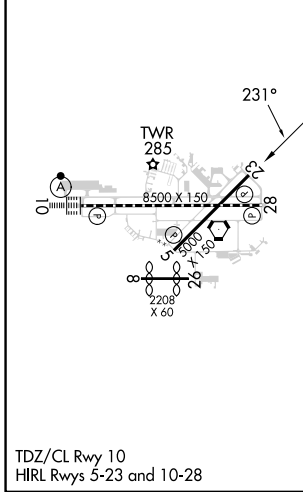
▼ For uncompensated Baro-VNAV systems, LNAV/VNAV NA below -15°C or above 54°C. When local altimeter setting not received, use Plant City altimeter setting: increase LPV DA to 444 feet; increase LNAV/VNAV DA to 540 feet; increase all MDAs 20 feet and LNAV Cat C/D and Circling Cat C visibility 1/8 SM. Baro-VNAV and VDP NA when using Plant City altimeter setting. Rwy 23 helicopter visibility reduction below 3/4 SM NA. Circling NA to Rwy's 8 and 26.

MISSED APPROACH: Climb to 2000 direct BIYAT and right turn on track 330° to MIREE then on track 014° to PLUMY and hold.

ATIS 118.025	TAMPA APP CON 120.65 290.3	LAKELAND TOWER 124.5 236.775	GND CON 121.4
------------------------	--------------------------------------	--	-------------------------



ELEV 142	D	TDZE 141
-----------------	----------	-----------------



2000	BIYAT	MIREE	tr 330°	PLUMY	tr 014°	△	VGSI and RNAV glidepath not coincident (VGSI Angle 3.00/TCH 46).
							5 NM Holding Pattern
							JOVMU
							6000 2700
							GP 3.00° TCH 50
							1700
							1.7 NM
							3 NM
							6.1 NM
CATEGORY	A	B	C	D			
LPV DA	426-1 285 (300-1)						
LNAV/VNAV DA	522-1¼ 381 (400-1¼)						
LNAV MDA	720-1	579 (600-1)	720-1½ 579 (600-1½)	720-1¾ 579 (600-1¾)			
CIRCLING	720-1	578 (600-1)	720-1½ 578 (600-1½)	840-2¼ 698 (700-2¼)			

LAKELAND, FLORIDA
Orig-H 08SEP22

27°59'N-82°01'W

LAKELAND LINDER INTL (LAL) RNAV (GPS) RWY 23

SE-3, 26 DEC 2024 to 23 JAN 2025

SE-3, 26 DEC 2024 to 23 JAN 2025