

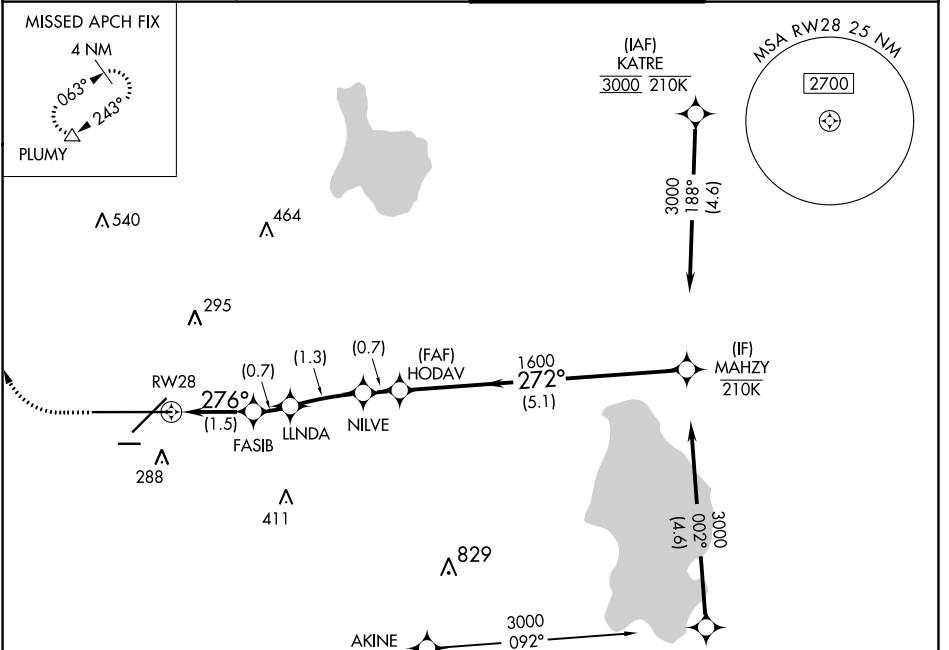
APP CRS	Rwy Idg	8500
276°	TDZE	142
	Apt Elev	142

RNAV (RNP) Z RWY 28

LAKELAND LINDER INTL (LAL)

RNP AR APCH - GPS.		MISSED APPROACH: Climb to 600 then climbing right turn to 2000 direct PLUMY and hold.	
For uncompensated Baro-VNAV systems, procedure NA below -15°C or above 54°C.			

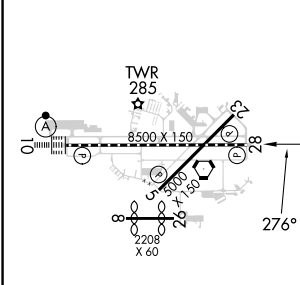
ATIS 118.025	TAMPA APP CON 120.65 290.3	LAKELAND TOWER 124.5 236.775	GND CON 121.4
------------------------	--------------------------------------	--	-------------------------



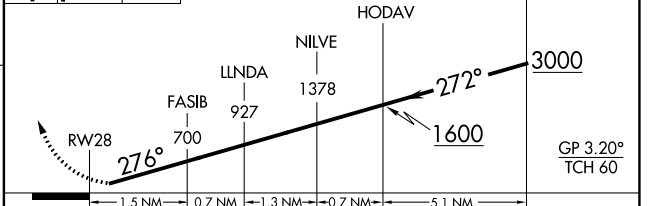
SE-3, 26 DEC 2024 to 23 JAN 2025

SE-3, 26 DEC 2024 to 23 JAN 2025

ELEV 142	D	TDZE 142
----------	----------	----------



600	2000	PLUMY	VGSI and RNAV glidepath not coincident (VGSI Angle 3.00/TCH 71).
-----	------	-------	--



CATEGORY	A	B	C	D
RNP 0.30 DA	507/55 365 (400-1)			

TDZ/CL Rwy 10
HIRL Rwy 5-23 and 10-28

AUTHORIZATION REQUIRED