

(SBOAT1.SBOAT) 24305

AL-939 (FAA-O)

LAKELAND LINDER INTL (LAL)  
LAKELAND, FLORIDA

# SBOAT ONE DEPARTURE (RNAV)

TAMPA DEP CON  
120.65 290.3

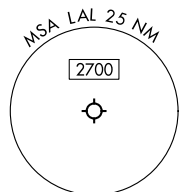
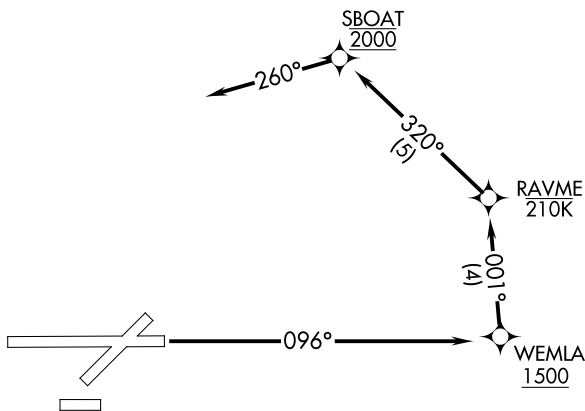
RNAV 1 - GPS.

**TOP ALTITUDE:  
2000**

## TAKEOFF MINIMUMS

Rwy 5, 8, 23, 26, 28: NA-ATC.

Rwy 10: Standard.



NOTE: Chart not to scale.



## DEPARTURE ROUTE DESCRIPTION

TAKEOFF RUNWAY 10: Climbing on heading  $096^\circ$  direct WEMLA, cross WEMLA at or above 1500, then climb and maintain 2000 on track  $001^\circ$  to RAVME, then on track  $320^\circ$  to SBOAT, then on track  $260^\circ$ .

# SBOAT ONE DEPARTURE (RNAV)

(SBOAT1.SBOAT) 31OCT24

LAKELAND, FLORIDA  
LAKELAND LINDER INTL (LAL)

SE-3, 26 DEC 2024 to 23 JAN 2025

SE-3, 26 DEC 2024 to 23 JAN 2025