

VOR/DME ALO	APP CRS	Rwy Idg	<b>6003</b>
<b>112.2</b>	<b>176°</b>	TDZE	<b>871</b>
Chan <b>59</b>		Apt Elev	<b>873</b>

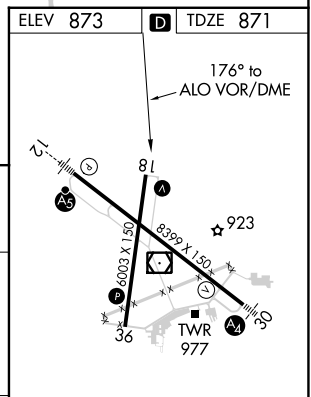
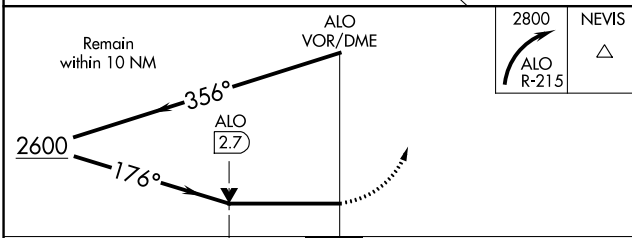
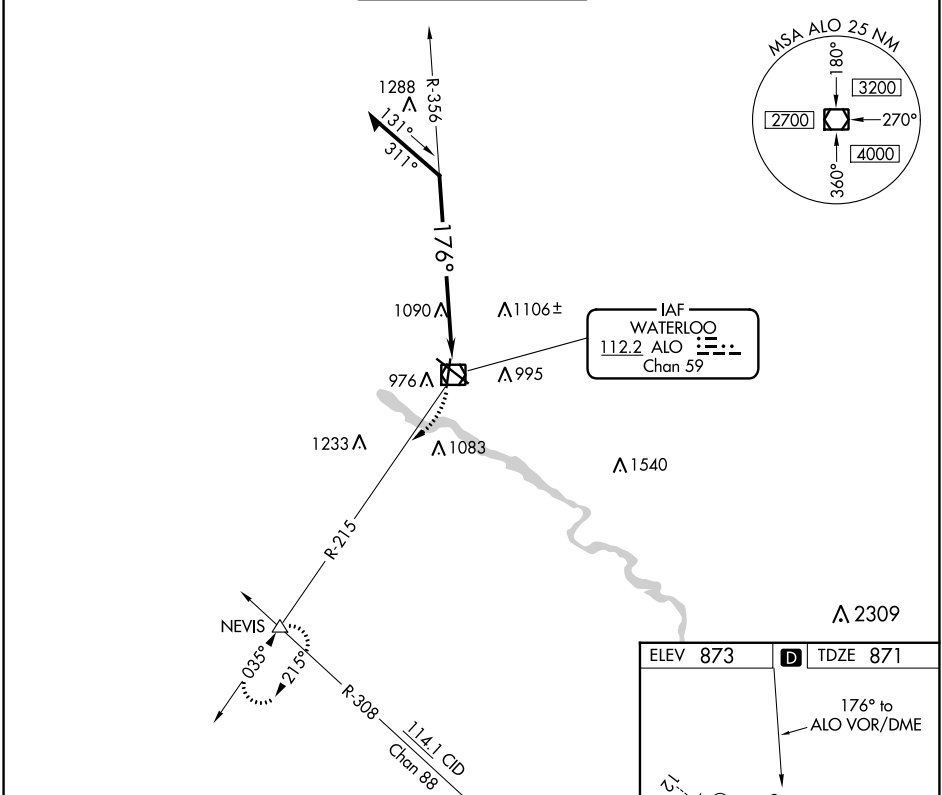
# VOR RWY 18

WATERLOO RGNL (ALO)

**⚠** Rwy 18 helicopter visibility reduction below  $\frac{3}{4}$  SM AN.

**⚠** MISSED APPROACH: Climbing right turn to 2800 on ALO VOR/DME R-215 to NEVIS INT and hold.

ATIS <b>120.65</b>	WATERLOO APP CON * <b>118.9 251.15</b>	WATERLOO TOWER * <b>125.075 (CTAF) 257.8</b>	GND CON <b>121.9 269.1</b>	UNICOM <b>122.95</b>
-----------------------	---	---	-------------------------------	-------------------------



CATEGORY	A	B	C	D
S-18	1600-1	729 (800-1)	1600-2	729 (800-2)
<b>C</b> CIRCLING	1600-1	727 (800-1)	1600-2	1600-2 $\frac{1}{4}$ 727 (800-2 $\frac{1}{4}$ )

HIRL Rwy 12-30 **Ⓛ**  
 MIRL Rwy 18-36 **Ⓛ**  
 REIL Rwys 18 and 36

NC-3, 26 DEC 2024 to 23 JAN 2025

NC-3, 26 DEC 2024 to 23 JAN 2025