

VOR or TACAN RWY 22L


VORTAC SLI 115.7 Chan 104	APCH CRS 214°	Rwy ldg TDZE Arpt Elev	8001 36 36
---	-------------------------	------------------------------	---------------------------------------

[USA]

LOS ALAMITOS AAF (KSLI)

DME required

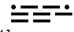
▼ * When ALS inop, increase CAT CD vis to 1 3/8 miles.
** Circling not authorized N of Rwy 4L-22R. Circling to Rwy 4R not authorized at night.

SALSF 

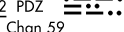
MISSED APPROACH: Climb to 1800, then climbing left turn to 3100 via SLI VORTAC R-058 to AHEIM INT and hold, continue climb-in-hold.

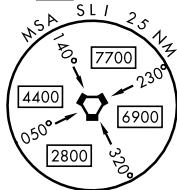
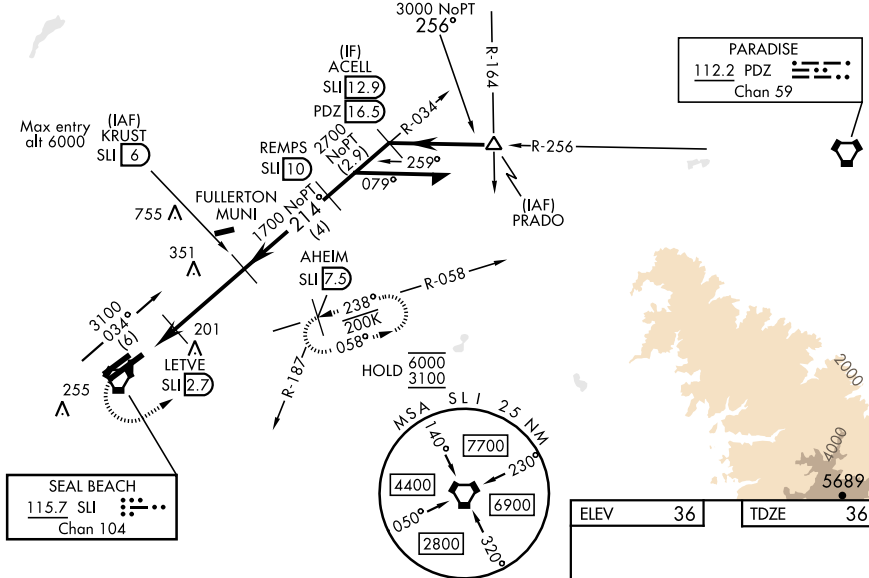
ATIS 118.875 379.975	SOCAL APP CON 125.35 316.125	TOWER 123.85 251.15	GND CON 126.95 257.95
--------------------------------	--	-------------------------------	---------------------------------

When local altimeter setting not received, use John Wayne/Orange County altimeter setting.

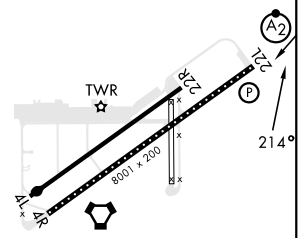
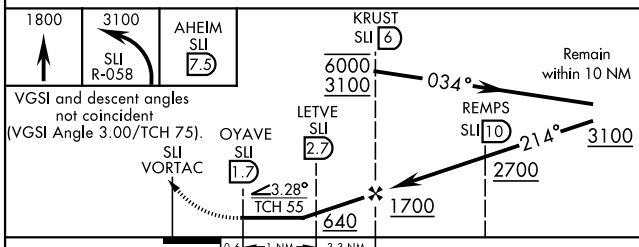
POMONA
110.4 POM 
Chan 41



Procedure NA for arrivals at PRADO via V16-370 Eastbound.

PARADISE
112.2 PDZ 
Chan 59



ELEV	36	TDZE	36
------	----	------	----



CATEGORY	A	B	C	D
S-22L*	500-1	464 (500-1)	500-1 1/8 464 (500-1 1/8)	
 CIRCLING**	500-1	464 (500-1)	600-1 1/2 564 (600-1 1/2)	600-2 564 (600-2)
KSNA-SNA (JOHN WAYNE/ORANGE COUNTY) ALTIMETER SETTING MINIMUMS				
S-22L	540-1	504 (600-1)	540-1 3/8 504 (600-1 3/8)	
 CIRCLING**	540-1	504 (600-1)	640-1 3/4 604 (700-1 3/4)	640-2 604 (700-2)

HIRL Rwy 4R-22L
MIRL Rwy 4L-22R
REIL Rwy 22L

VOR or TACAN RWY 22L

SW-3, 26 DEC 2024 to 23 JAN 2025

SW-3, 26 DEC 2024 to 23 JAN 2025