

# TACAN RWY 29

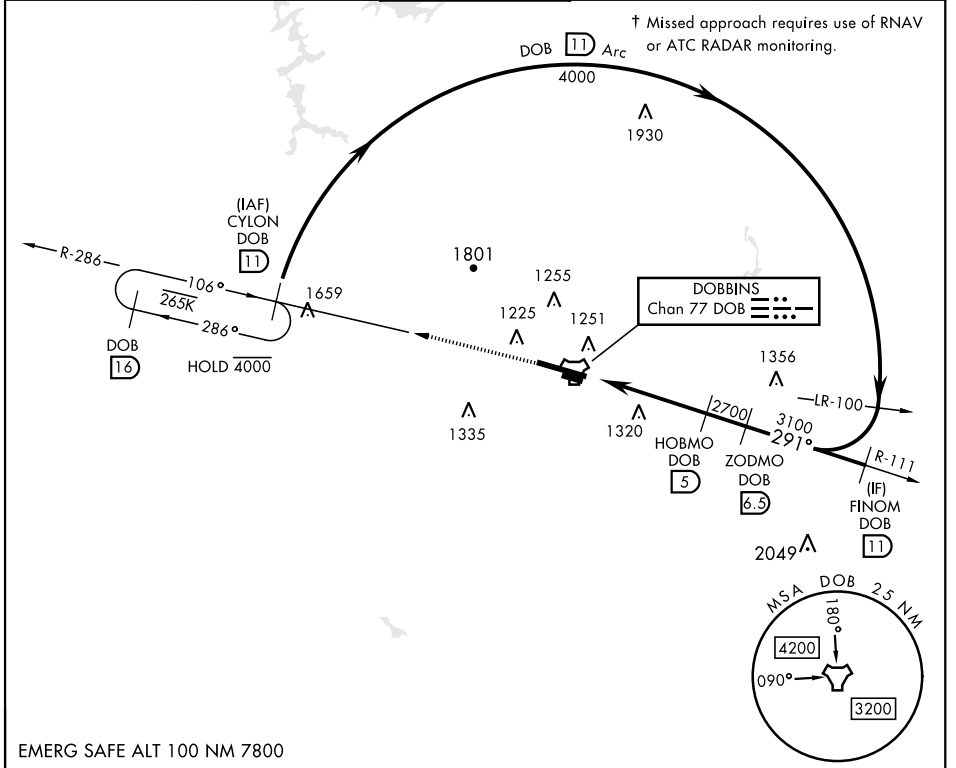
TACAN Chan <b>77</b>	APCH CRS <b>291°</b>	Rwy Idg <b>10,002</b> TDZE <b>1014</b> Arpt Elev <b>1069</b>
----------------------	----------------------	--

[USAF]

DOBBINS ARB (KMGE)

<p>▼ * When ALS inop, increase CAT AB RVR to 55 and vis to 1 mile, CAT CDE vis to 2 miles.</p> <p>** Circling not authorized N of Rwy 11-29 for CAT DE aircraft. Circling to assault strip not authorized.</p>	<p>SALSF <b>(A2)</b></p>	<p>† MISSED APPROACH: Climb to 3000 on DOB TACAN R-286 to CYLON and hold.</p>
--	--------------------------	---

ATIS ★ <b>269.5</b>	ATLANTA APP CON <b>121.0 268.7</b>	TOWER ★ <b>120.75 370.875</b>	GND CON <b>125.3 275.8</b>	ASR
---------------------	------------------------------------	-------------------------------	----------------------------	-----



<p>3000 DOB R-286</p> <p>CYLON DOB 11</p> <p>VGSI and descent angles not coincident. (VGSI Angle 3.00)</p>	<p>ELEV 1069</p> <p>TDZE 1014</p>																		
<table border="1"> <thead> <tr> <th>CATEGORY</th> <th>A</th> <th>B</th> <th>C</th> <th>D</th> <th>E</th> </tr> </thead> <tbody> <tr> <td>S-29 *</td> <td>1720/40 706 (700-¾)</td> <td>1720-1¾ 706 (700-1¾)</td> <td>1760-2 691 (700-2)</td> <td>1760-2¼ 691 (700-2¼)</td> <td>1760-2½ 691 (700-2½)</td> </tr> <tr> <td>CIRCLING **</td> <td>1720-1 651 (700-1)</td> <td>1760-2 691 (700-2)</td> <td>1760-2¼ 691 (700-2¼)</td> <td>1760-2½ 691 (700-2½)</td> <td></td> </tr> </tbody> </table>	CATEGORY	A	B	C	D	E	S-29 *	1720/40 706 (700-¾)	1720-1¾ 706 (700-1¾)	1760-2 691 (700-2)	1760-2¼ 691 (700-2¼)	1760-2½ 691 (700-2½)	CIRCLING **	1720-1 651 (700-1)	1760-2 691 (700-2)	1760-2¼ 691 (700-2¼)	1760-2½ 691 (700-2½)		<p>HRL Rwy 11-29</p> <p>REL Rwy 11 and 29</p>
CATEGORY	A	B	C	D	E														
S-29 *	1720/40 706 (700-¾)	1720-1¾ 706 (700-1¾)	1760-2 691 (700-2)	1760-2¼ 691 (700-2¼)	1760-2½ 691 (700-2½)														
CIRCLING **	1720-1 651 (700-1)	1760-2 691 (700-2)	1760-2¼ 691 (700-2¼)	1760-2½ 691 (700-2½)															

# TACAN RWY 29

SE-4, 26 DEC 2024 to 23 JAN 2025

SE-4, 26 DEC 2024 to 23 JAN 2025