

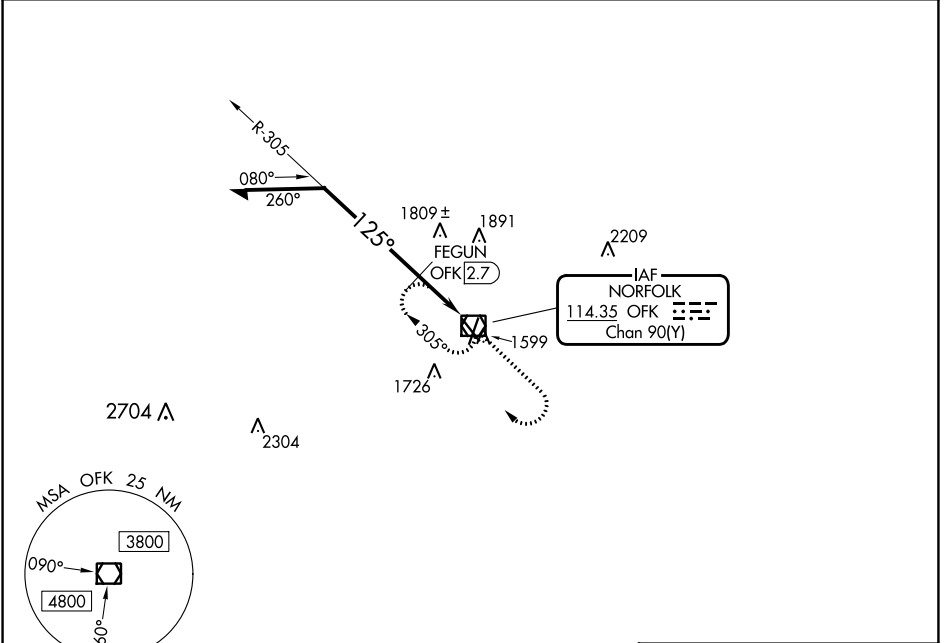
VOR/DME OFK 114.35 Chan 90(Y)	APP CRS 125°	Rwy Idg TDZE Apt Elev	5160 1543 1573
---	------------------------	-----------------------------	---

VOR RWY 14

NORFOLK RGNL/KARL STEFAN MEML FLD (OFK)

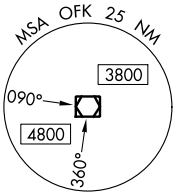
▽ ▲ Rwy 14 helicopter visibility reduction below 3/4 SM NA.	MISSED APPROACH: Climb to 3400 then right turn direct OFK VOR/DME and hold.
--	---

ASOS 119.025	MINNEAPOLIS CENTER 125.025 235.625	UNICOM 122.7 (CTAF) 0
------------------------	--	---------------------------------

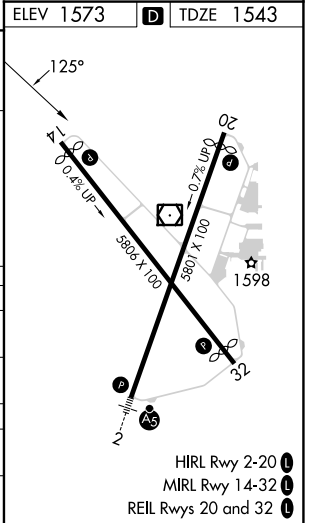
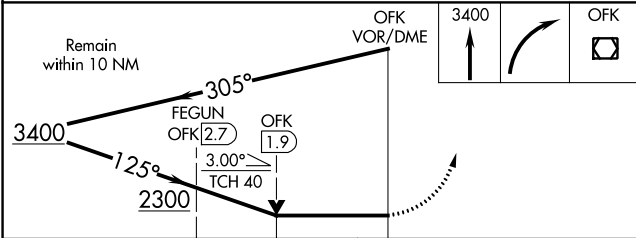


NC-2, 26 DEC 2024 to 23 JAN 2025

NC-2, 26 DEC 2024 to 23 JAN 2025



ELEV 1573	D TDZE 1543
-----------	--------------------



CATEGORY	A	B	C	D
S-14	2300-1 757 (800-1)	2300-1¼ 757 (800-1¼)	2300-2	757 (800-2)
C CIRCLING	2300-1 727 (800-1)	2300-1¼ 727 (800-1¼)	2300-2	2360-2½ 787 (800-2½)
FEGUN FIX MINIMUMS (DME REQUIRED)				
S-14	2060-1	517 (500-1)	2060-1⅓	517 (500-1⅓)
C CIRCLING	2060-1 487 (500-1)	2100-1 527 (600-1)	2260-2 687 (700-2)	2360-2½ 787 (800-2½)

VOR RWY 14

HIRL Rwy 2-20
MIRL Rwy 14-32
REIL Rwys 20 and 32