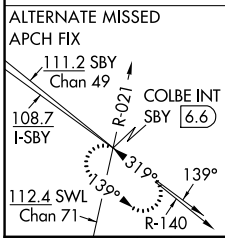
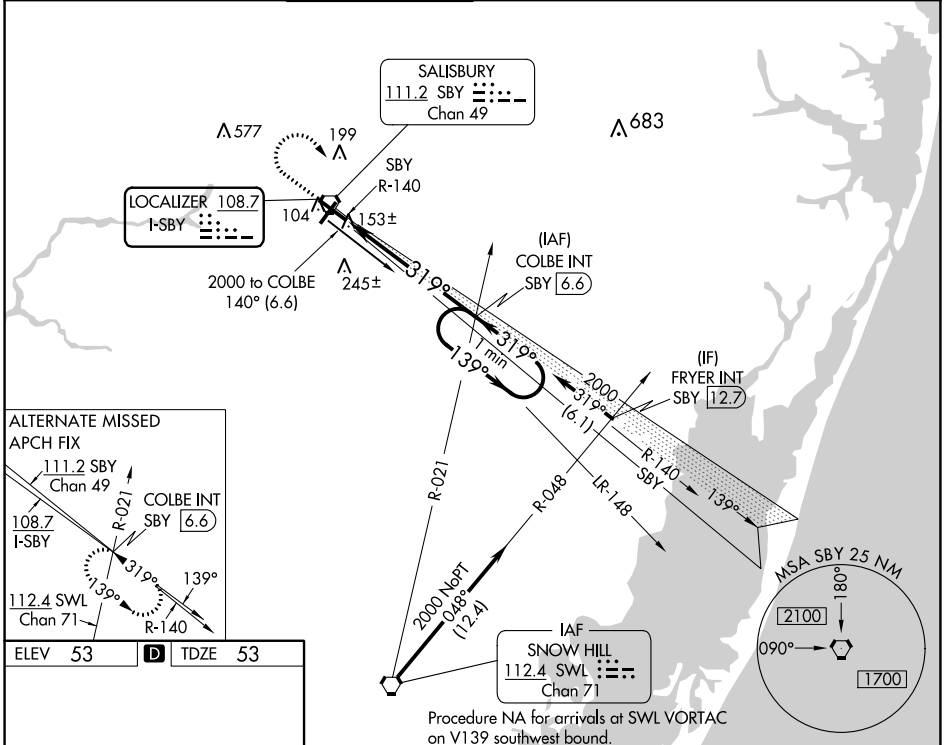


LOC I-SBY <b>108.7</b>	APP CRS <b>319°</b>	Rwy Idg 6400	TDZE 53
		Apt Elev 53	

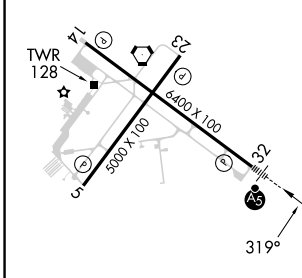
# ILS or LOC RWY 32

SALISBURY-OCEAN CITY WICOMICO RGNL (SBY)

<p>▼ When local altimeter setting not received, use Georgetown altimeter setting: increase DA to 305 feet; increase all MDA 60 feet and S-LOC 32 Cat C and Circling Cat D visibility ¼ SM.</p>	<p>MALSR</p>	<p>MISSED APPROACH: Climb to 700 then climbing right turn to 2000 on heading 170° and on SBY VORTAC R-140 to COLBE INT/SBY VORTAC 6.6 DME and hold.</p>				
ASOS <b>118.325</b>	PATUXENT APP CON★ <b>127.95 314.0</b>	SALISBURY TOWER★ <b>119.425</b> (CTAF) <b>0</b>	GND CON <b>123.775</b>	CLNC DEL <b>123.775</b>	CLNC DEL <b>118.55</b> (when twr closed)	UNICOM <b>122.95</b>



ELEV 53	<b>D</b>	TDZE 53
---------	----------	---------



REIL Rwy 5, 14 and 23 **0**  
MIRL Rwy 5-23 **0**  
HIRL Rwy 14-32 **0**

FAF to MAP 5.9 NM

Knots	60	90	120	150	180
Min:Sec	5:54	3:56	2:57	2:22	1:58

700	2000	SBY R-140	COLBE INT	COLBE INT SBY (6.6)	One Minute Holding Pattern
↑	hdg 170°				
*LOC only					
SBY (0.8)	*SBY (1.8)	2000	2000	139°	2000
				← 319°	GS 3.00° TCH 54
1 NM		4.9 NM			
CATEGORY	A	B	C	D	
S-ILS 32	253-½		200 (200-½)		
S-LOC 32	420-½		367 (400-½)		420-¾ 367 (400-¾)
CIRCLING	480-1 427 (500-1)	520-1 467 (500-1)	560-1½ 507 (600-1½)	700-2 647 (700-2)	

NE-3, 26 DEC 2024 to 23 JAN 2025

NE-3, 26 DEC 2024 to 23 JAN 2025