

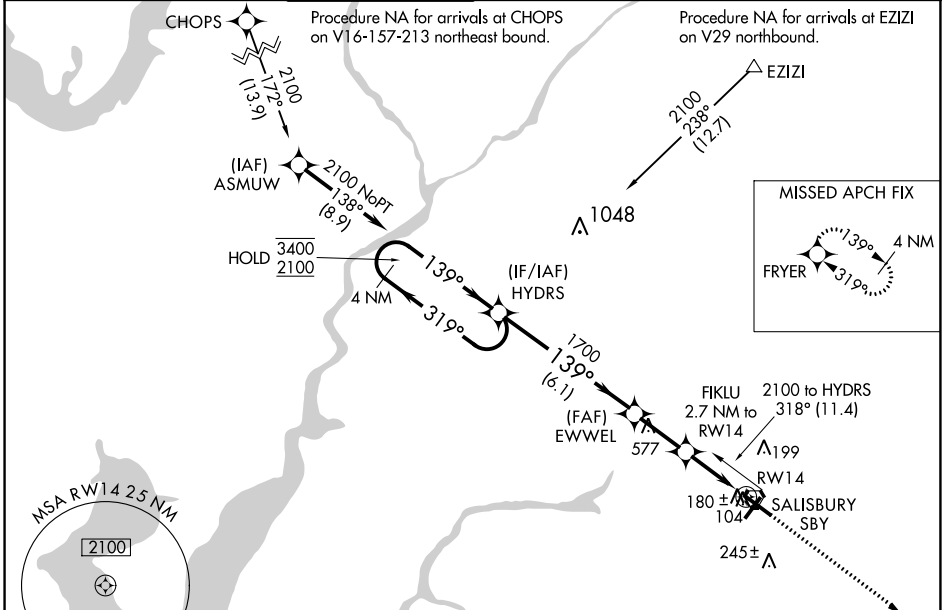
WAAS CH 56320 W14A	APP CRS 139°	Rwy Idg TDZE Apt Elev	6400 49 53
--	------------------------	-----------------------------	---------------------------------------

RNAV (GPS) RWY 14

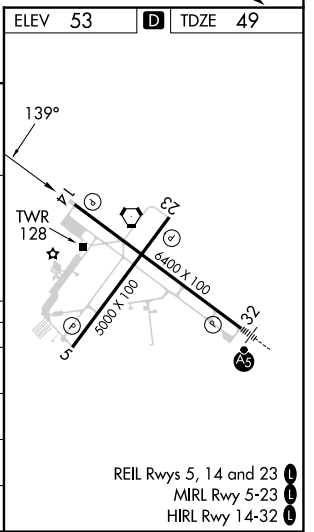
SALISBURY-OCEAN CITY WICOMICO RGNL (SBY)

RNP APCH.						MISSED APPROACH: Climb to 2000 direct FRYER and hold.
<p>T Rwy 14 helicopter visibility reduction below ¾ SM NA. A For uncompensated Baro-VNAV systems, LNAV/VNAV NA below -16° C or above 54° C.</p>						

ASOS 118.325	PATUXENT APP CON ★ 127.95 314.0	SALISBURY TOWER ★ 119.425 (CTAF) 0	GND CON 123.775	CLNC DEL 123.775	CLNC DEL 118.55 (when twr closed)	UNICOM 122.95
------------------------	---	--	---------------------------	----------------------------	--	-------------------------



4 NM Holding Pattern		HYDRS	EWWEL	FIKLU 2.7 NM to RW14	2000	FRYER
3400 ← 319°	← 139° →	1700	1700	*1.1 NM to RW14	↑	✧
2100				RW14		
GP 3.00°				*940		
TCH 45						
		6.1 NM	2.3 NM	1.6 NM	1.1 NM	
CATEGORY	A	B	C	D		
LPV DA	363-1		314 (400-1)			
LNAV/VNAV DA	453-1½		404 (400-1½)			
LNAV MDA	440-1	391 (400-1)	440-1⅛ 391 (400-1⅛)	440-1¼ 391 (400-1¼)		
CIRCLING	480-1 427 (500-1)	520-1 467 (500-1)	560-1½ 507 (600-1½)	700-2 647 (700-2)		



NE-3, 26 DEC 2024 to 23 JAN 2025

NE-3, 26 DEC 2024 to 23 JAN 2025

RNAV (GPS) RWY 14