


WAAS CH <b>78400</b> <b>W14A</b>	APP CRS <b>137°</b>	Rwy Idg <b>6983</b> TDZE <b>107</b> Apt Elev <b>107</b>
--	------------------------	---

# RNAV (GPS) RWY 14

MC ALLEN INTL (MFE)

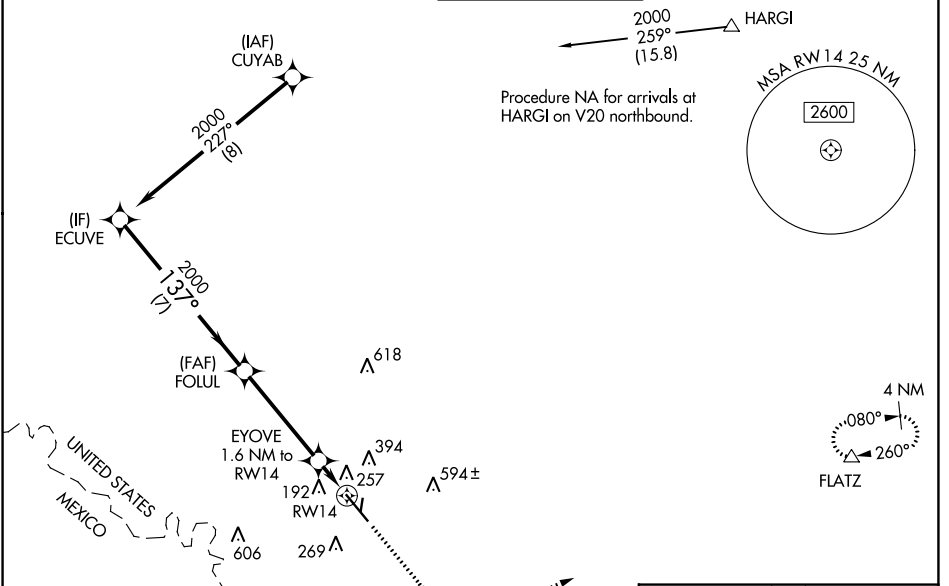
**RNP APCH-GPS.**

**⚠** Circling NA northeast of Rwy 14-32. For inop ALS, increase LNAV/VNAV visibility all Cats to 3/8 SM and LNAV visibility Cat C/D to 1/8 SM. For inop ALS when using Weslaco altimeter setting, increase LNAV/VNAV visibility all Cats to 1 SM. For uncompensated Baro-VNAV systems, LNAV/VNAV NA below 1°C or above 54°C. When local altimeter setting not received, use Weslaco altimeter setting and increase all DA 39 feet and LNAV/VNAV all Cats visibility 1/8 SM; increase all MDA 40 feet and LNAV Cat C/D visibility 1/8 SM.

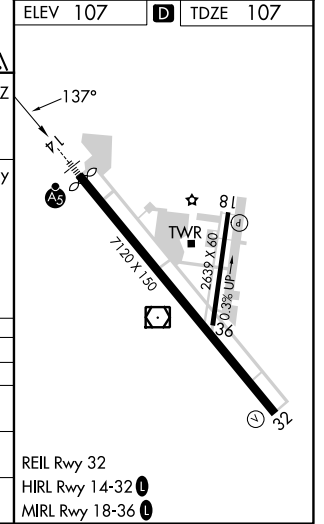
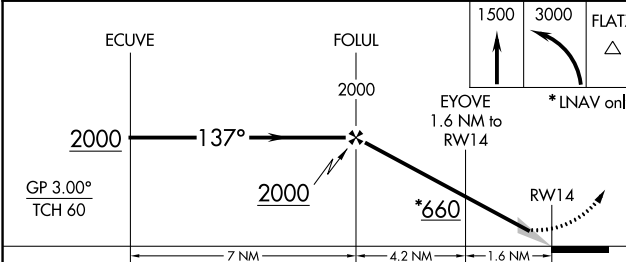
**MALSR** 

**MISSED APPROACH:** Climb to 1500 then climbing left turn to 3000 direct FLATZ and hold.

ATIS <b>128.5</b>	VALLEY APP CON <b>126.55 377.2</b>	<b>MC ALLEN TOWER ★</b> <b>118.5 (CTAF) 256.9</b>	GND CON <b>121.8</b>	UNICOM <b>122.95</b>
----------------------	---------------------------------------	--	-------------------------	-------------------------



ELEV 107	<b>D</b> TDZE 107
----------	-------------------



CATEGORY	A	B	C	D
LPV DA		307-1/2	200 (200-1/2)	
LNAV/VNAV DA		418-1/2	311 (400-1/2)	
LNAV MDA	520-1/2	413 (500-1/2)	520-3/4	413 (500-3/4)
<b>C</b> CIRCLING	580-1	473 (500-1)	580-1 1/2	800-2 1/4
			473 (500-1 1/2)	693 (700-2 1/4)

SC-3, 26 DEC 2024 to 23 JAN 2025

SC-3, 26 DEC 2024 to 23 JAN 2025