

WAAS CH 99617 W32A	APP CRS 326°	Rwy Idg 6301 TDZE 1322 Apt Elev 1333
--	------------------------	---

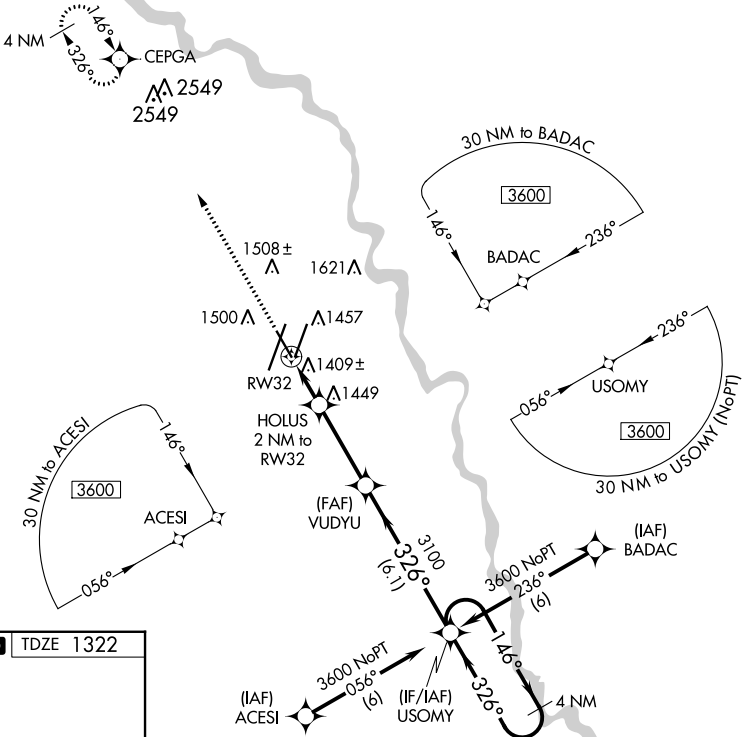
RNAV (GPS) RWY 32

WICHITA DWIGHT D EISENHOWER NTL (ICT)

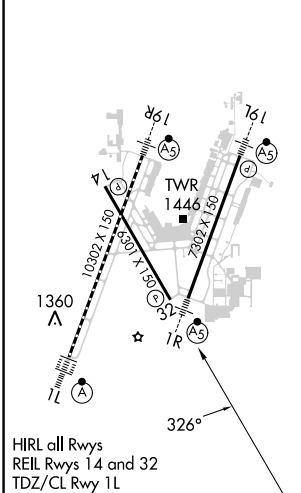
<p>▼ For uncompensated Baro-VNAV systems, LNAV/VNAV NA below -1.5°C (5°F) or above 54°C (130°F). DME/DME RNP-0.3 NA.</p>	<p>MISSED APPROACH: Climb to 3600 direct CEPGA and hold.</p>			
	ATIS 125.15	WICHITA APP CON 126.7 353.5	WICHITA TOWER 118.2 257.8	GND CON 121.9 348.6

NC-2, 26 DEC 2024 to 23 JAN 2025

NC-2, 26 DEC 2024 to 23 JAN 2025



ELEV 1333 **D** TDZE 1322



WICHITA, KANSAS
Amdt 1B 05NOV20

3600	CEPGA	USOMY	4 NM Holding Pattern	
*LNAV only.		HOLUS 2 NM to RWY 32	VUDYU 3100	
1 NM to RWY 32		2000	3100	
1 NM		1 NM	3.3 NM	
1 NM		6.1 NM		
CATEGORY	A	B	C	D
LPV DA		1572-3/4	250 (300-3/4)	
LNAV/VNAV DA		1761-1 1/2	439 (500-1 1/2)	
LNAV MDA		1680-1	358 (400-1)	1680-1 1/4
				358 (400-1 1/4)
C CIRCLING	1800-1	467 (500-1)	1980-1 3/4	1980-2
			647 (700-1 1/4)	647 (700-2)

WICHITA DWIGHT D EISENHOWER NTL (ICT)
37°39'N-97°26'W
RNAV (GPS) RWY 32