

CREPE THREE DEPARTURE

GND CON

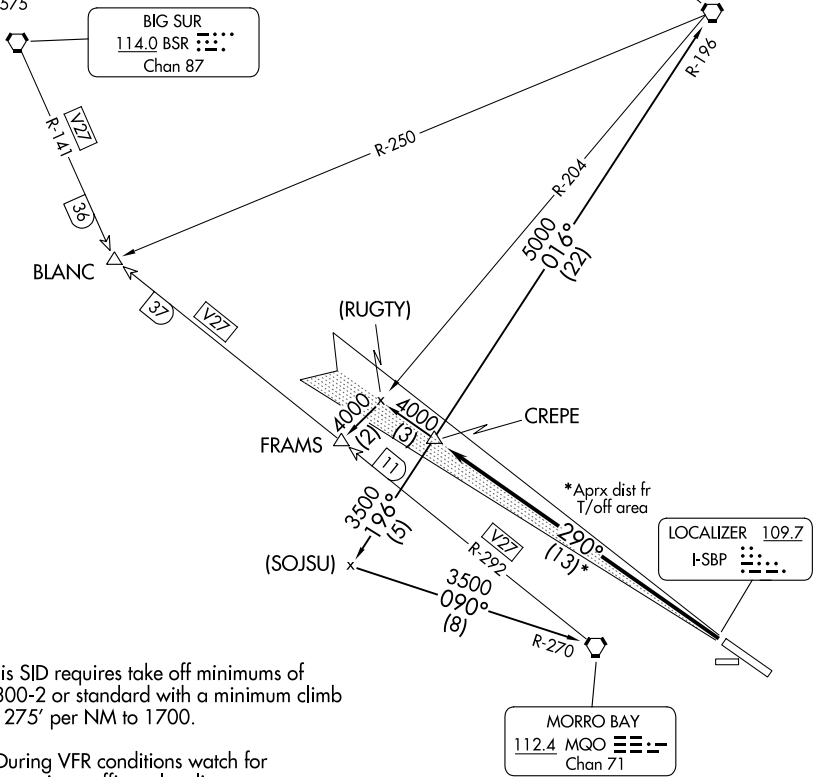
121.6

SAN LUIS TOWER *
124.0 (CTAF) 379.9

SANTA BARBARA DEP CON *
127.725 244.575

BIG SUR
114.0 BSR
Chan 87

PASO ROBLES
114.3 PRB
Chan 90



NOTE: This SID requires take off minimums of 1300-2 or standard with a minimum climb of 275' per NM to 1700.

NOTE: During VFR conditions watch for opposing traffic on localizer course.

NOTE: This procedure applicable to Runway 29 departures only.

NOTE: Chart not to scale.

DEPARTURE ROUTE DESCRIPTION

TAKEOFF RUNWAY 29: Climb via San Luis Obispo localizer I-SBP west course to CREPE INT; thence via (transition) or (assigned route).

FRAMS TRANSITION (CREPE3.FRAMS): From over CREPE INT via I-SBP LOC west course and PRB R-204 to FRAMS INT.

MORRO BAY TRANSITION (CREPE3.MQO): From over CREPE INT via PRB R-196 and MQO R-270 to MQO VORTAC.

PASO ROBLES TRANSITION (CREPE3.PRB): From over CREPE INT via PRB R-196 to PRB VORTAC.

CREPE THREE DEPARTURE