

| | | |
|--|------------------------|---|
| WAAS CH 50516 W09A | APP CRS 095° | Rwy Idg 8003 TDZE 77 Apt Elev 80 |
|--|------------------------|---|

RNAV (GPS) RWY 9R

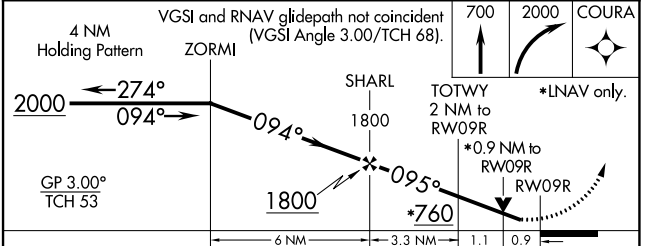
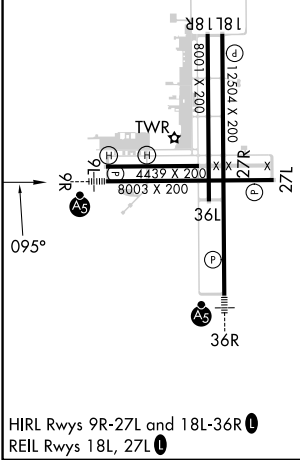
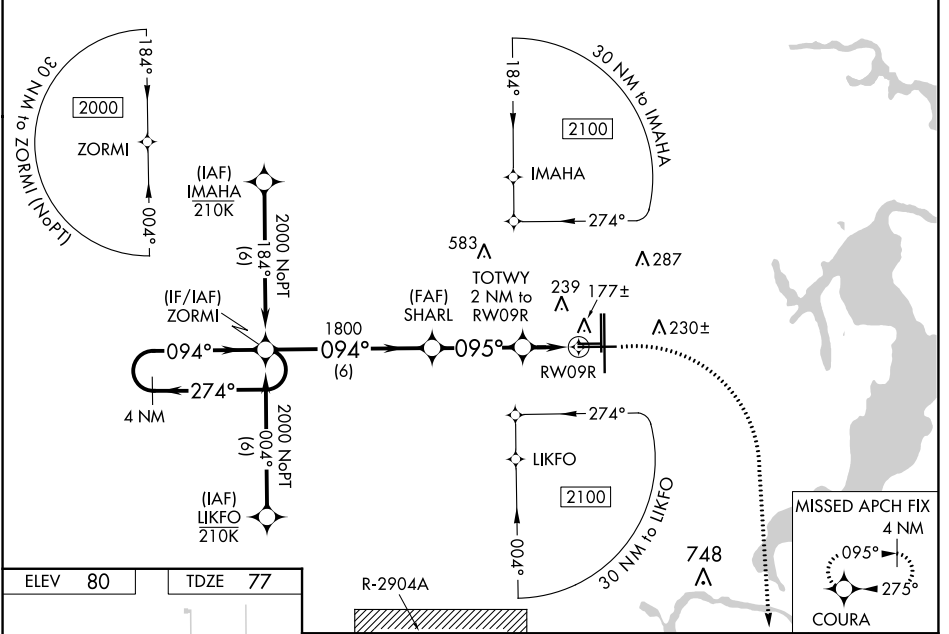
CECIL (VQQ)

⚠ Baro-VNAV NA when using Jacksonville Intl altimeter setting. For uncompensated Baro-VNAV systems, LNAV/VNAV NA below -15°C (5°F) or above 54°C (130°F). DME/DME RNP-0.3 NA. Helicopter visibility reduction below 3/4 SM NA. When local altimeter setting not received, use Jacksonville Intl altimeter setting and increase all DA 52 feet and all MDA 60 feet. For inop MALSR, increase LPV and LNAV/VNAV all Cats visibility to 7/8 mile, and LNAV all Cats visibility to 1 mile. For inop MALSR, when using Jacksonville Intl altimeter setting, increase LPV all Cats visibility to 1 mile, LNAV/VNAV all Cats visibility to 1 mile, and LNAV Cats C/D visibility to 1 1/8 mile.

MALSR

MISSED APPROACH:
Climb to 700 then climbing right turn to 2000 direct COURA and hold.

| | | | | | |
|------------------------|--|---|-----------------------------------|-----------------------------------|-----------------------|
| ATIS 125.275 | JACKSONVILLE APP CON 127.775 377.075 | CECIL TOWER* 126.1 (CTAF) 235.625 | GND CON 121.625 226.675 | CINC DEL 123.975 254.25 | GCO 135.075 |
|------------------------|--|---|-----------------------------------|-----------------------------------|-----------------------|



| CATEGORY | A | B | C | D |
|-------------------|----------------------|----------------------|------------------------------|----------------------|
| LPV DA | | 351-3/4 | 274 (300-3/4) | |
| LNAV/VNAV DA | | 338-3/4 | 261 (300-3/4) | |
| LNAV MDA | | 440-3/4 | 363 (400-3/4) | |
| C CIRCLING | 540-1 460 (500-1) | 560-1 480 (500-1) | 600-1 1/2 520 (600-1 1/2) | 640-2 560 (600-2) |

SE-3, 26 DEC 2024 to 23 JAN 2025

SE-3, 26 DEC 2024 to 23 JAN 2025