

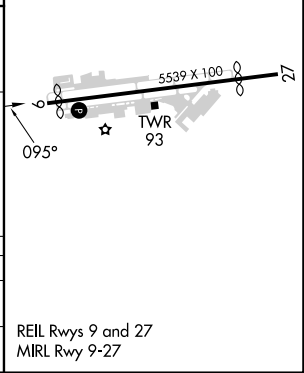
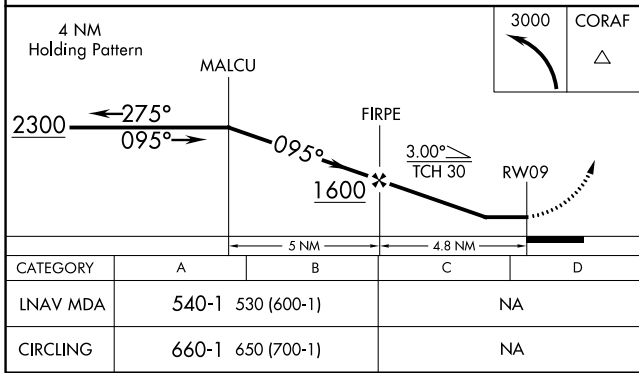
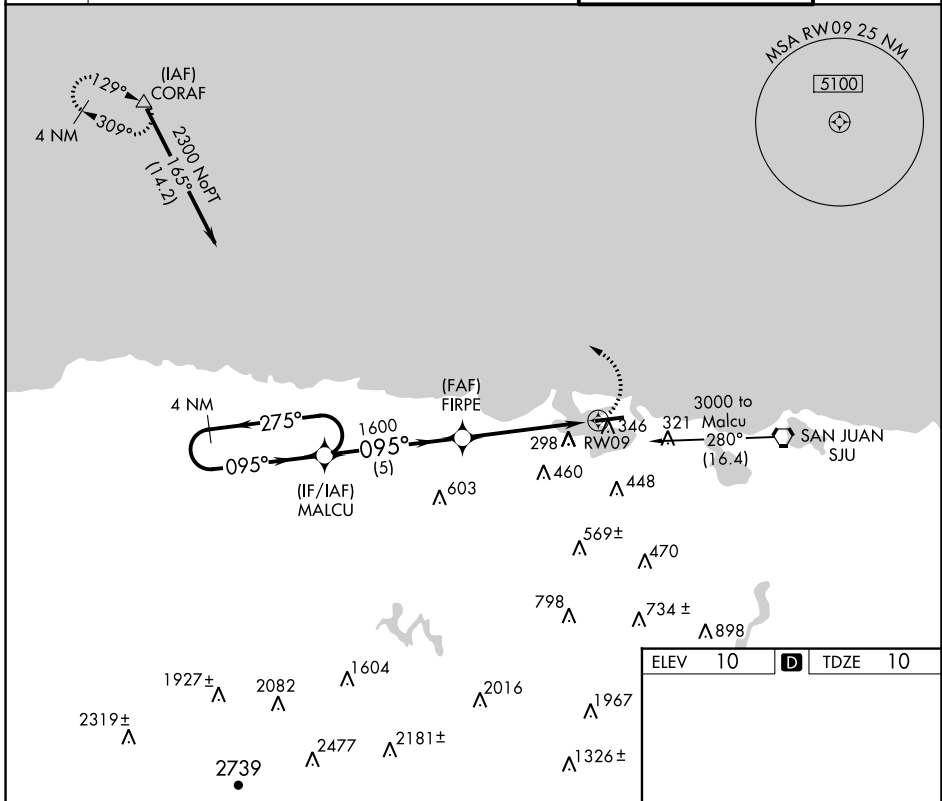
APP CRS	Rwy Idg	<b>5126</b>
<b>095°</b>	TDZE	<b>10</b>
	Apt Elev	<b>10</b>

# RNAV (GPS) RWY 9

FERNANDO LUIS RIBAS DOMINICCI (SIG) (TJIG)

RNP APCH.	<p>▼ Use Luis Munoz Marin Intl altimeter setting. Circling Rwy 27 NA at night. Rwy 9 helicopter visibility reduction below 3/4 SM NA.</p> <p>▲ NA</p>	MISSED APPROACH: Climbing left turn to 3000 direct CORAF WP and hold.
-----------	---	---

ATIS	SAN JUAN APP CON	ISLA GRANDE TOWER*	GND CON
<b>120.4</b>	<b>119.4 269.2</b> (WEST & SW) <b>120.9 290.2</b> (NORTH & EAST)	<b>135.875</b> (CTAF) <b>298.85</b>	<b>121.7</b>



CATEGORY	A	B	C	D
LNAV MDA	540-1	530 (600-1)		NA
CIRCLING	660-1	650 (700-1)		NA

REIL Rwys 9 and 27  
MIRL Rwy 9-27

SE-3, 26 DEC 2024 to 23 JAN 2025

SE-3, 26 DEC 2024 to 23 JAN 2025