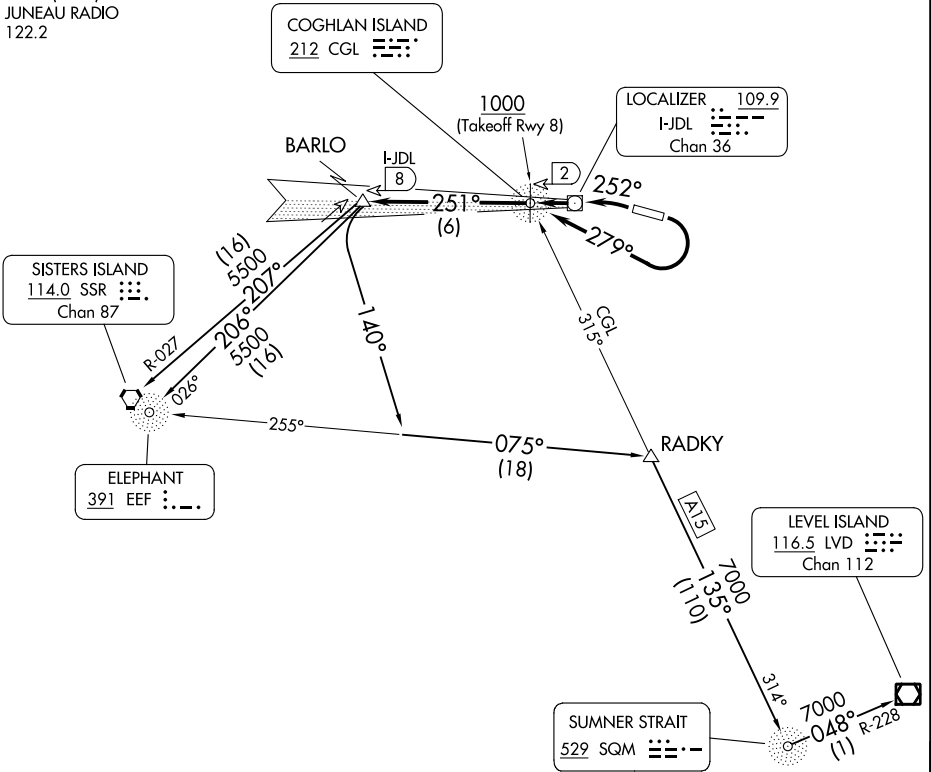


JUNEAU SIX DEPARTURE (OBSTACLE)

AL-1191 (FAA)

JUNEAU INTL (JNU)(PAJN)
JUNEAU, ALASKA

ANCHORAGE CENTER
133.9
ATIS
135.2
GND CON
121.9
JUNEAU TOWER ★
118.7 (CTAF) 278.3
JUNEAU RADIO
122.2



TAKEOFF MINIMUMS

Rwy 8: 1000-3 with minimum climb from 1000 as stated per transition.
Rwy 26: 600-2 or standard with minimum climb of 595' per NM to 800, then as stated per transition.

NOTE: SISTERS ISLAND and ELEPHANT Transitions: Minimum climb of 330' per NM to 2800.
NOTE: LEVEL ISLAND and SUMNER STRAIT Transitions: Minimum climb of 385' per NM to 4600'.
NOTE: ADF required.
NOTE: Obtain ATC approval for this procedure if not issued as part of the IFR clearance.
CAUTION: Rapidly rising terrain to 3000' MSL north, south and east of airport.

NOTE: Chart not to scale.

(CONTINUED ON FOLLOWING PAGE)

JUNEAU SIX DEPARTURE (OBSTACLE)

AK, 26 DEC 2024 to 20 FEB 2025

AK, 26 DEC 2024 to 20 FEB 2025