

LOC/DME I-OME 108.7 Chan 24	APP CRS 099°	Rwy Idg 6009 TDZE 16 Apt Elev 38
-------------------------------------------------	------------------------	-------------------------------------------------------------

LOC/DME BC RWY 10

NOME (OME) (PAOM)

LOC BC unusable inside TOGGU/I-OME 1 DME. Night landing:
Rwy 10 operational VGSi required, remain on or above VGSi glidepath until threshold. Night landing: Rwy 21 NA. Circling NA for Cats C and D north of Rwy 10-28.

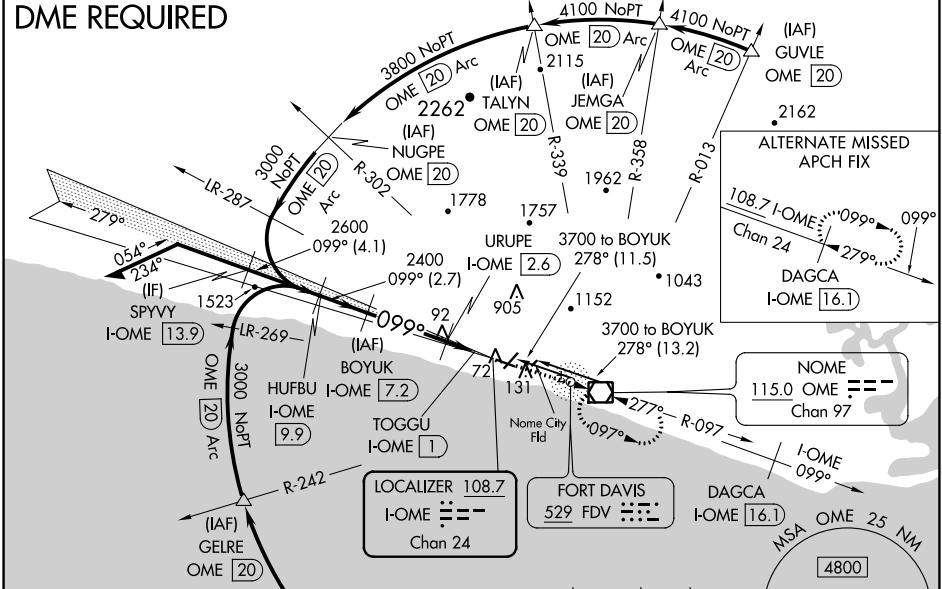
MISSED APPROACH: Climb to 3000 direct OME VOR/DME and hold, continue climb-in-hold to 3000.

AFIS
119.925

ANCHORAGE CENTER
133.3 290.4

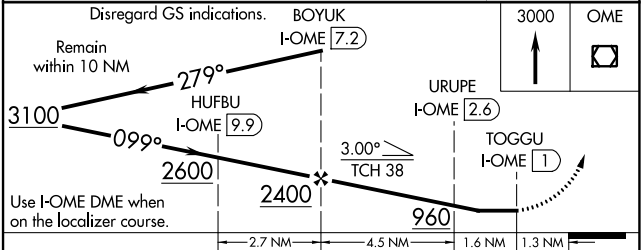
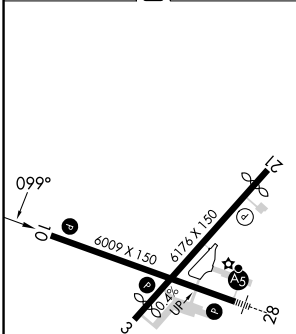
NOME RADIO
123.6 (CTAF)

DME REQUIRED



BACK COURSE

ELEV 38 TDZE 16



CATEGORY	A	B	C	D
S-10		340-1½	324 (400-1½)	
C CIRCLING		540-1½	502 (600-1½)	700-2 662 (700-2)

MIRL Rwy 3-21
HIRL Rwy 10-28
REIL Rwy 3 and 10

AK, 26 DEC 2024 to 20 FEB 2025

AK, 26 DEC 2024 to 20 FEB 2025