

# HI-ILS Z or LOC Z RWY 12

LOC/DME I-AKN <b>110.3</b> Chan <b>40</b>	APCH CRS <b>121°</b>	Rwy Idg TDZE Arpt Elev <b>8501</b> <b>62</b> <b>73</b>
---	-------------------------	---

[USAF]

KING SALMON (AKN) (PAKN)

DME required. RADAR required for procedure entry.

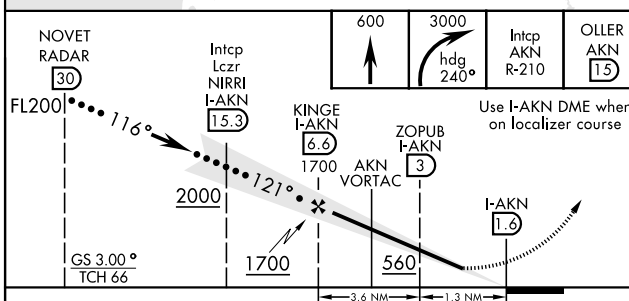
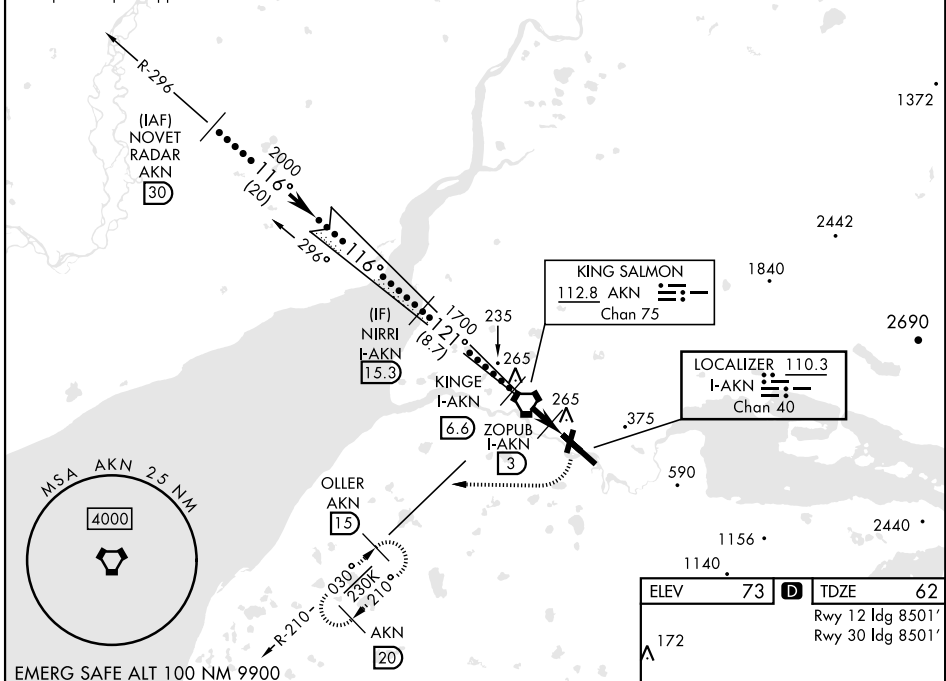
- ▼ \* When ALS inop, increase RVR to 40.
- \*\* When ALS inop, increase RVR to 55.
- ☁ -31° C



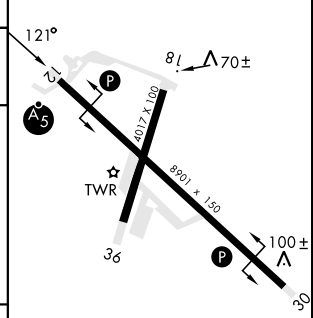
MISSED APPROACH: Climb to 600, then climbing right turn to 3000 via heading 240° and AKN VORTAC R-210 to OLLER/AKN 15 DME and hold.

ATIS <b>128.8</b>	ANCHORAGE CENTER <b>124.8 354.0</b>	TOWER ★ <b>118.3 279.5</b>	GND CON <b>121.9</b>	CTAF <b>121.90 352.05</b>	UNICOM <b>122.95</b>
----------------------	--	-------------------------------	-------------------------	------------------------------	-------------------------

† When control tower closed, increase RVR to 50.  
Autopilot coupled approaches not authorized below 700' MSL.



ELEV	73	TDZE	62
Rwy 12 Idg 8501'			
Rwy 30 Idg 8501'			



CATEGORY	C	D	E
S-ILS 12*†	262/24	200 (300-½)	
S-LOC 12**†	420/30	358 (400-¾)	
CIRCLING	580-1½	900-2¾	960-3
	507 (600-1½)	827 (900-2¾)	887 (900-3)

HIRL Rwy 12-30  
MIRL Rwy 18-36

# HI-ILS Z or LOC Z RWY 12

AK, 26 DEC 2024 to 20 FEB 2025

AK, 26 DEC 2024 to 20 FEB 2025