

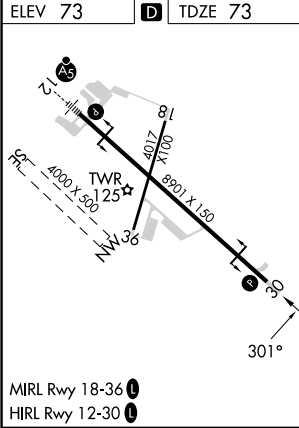
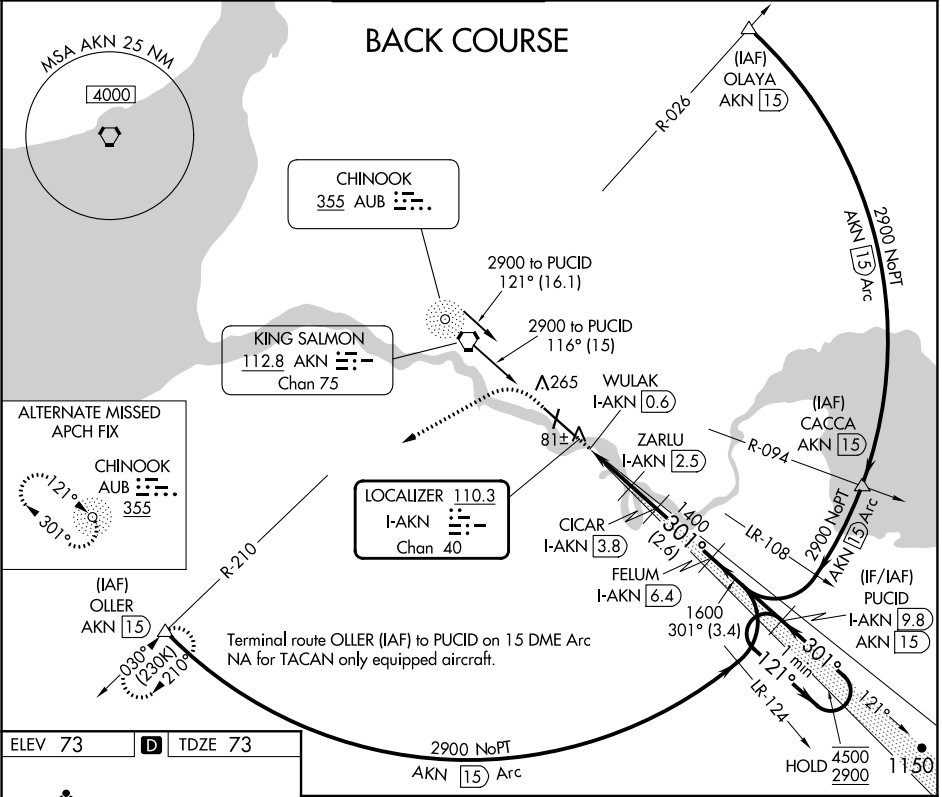
LOC/DME I-AKN <b>110.3</b> Chan <b>40</b>	APP CRS <b>301°</b>	Rwy Idg <b>8501</b> TDZE <b>73</b> Apt Elev <b>73</b>
---	------------------------	---

**LOC BC RWY 30**  
KING SALMON (AKN)(PAKN)

DME required.  
V  
A

MISSED APPROACH: Climb to 600 then climbing left turn to 3000 on heading 240° and AKN VORTAC R-210 to OLLER/ 15 DME and hold.

ATIS <b>128.8</b>	ANCHORAGE CENTER <b>124.8 354.0</b>	KING SALMON TOWER* <b>118.3 279.5</b>	GND CON <b>121.9</b>	UNICOM <b>122.95</b>	CTAF <b>121.90 352.05</b>
----------------------	--	--	-------------------------	-------------------------	------------------------------



ELEV 73	<b>D</b> TDZE 73				
600	3000	OLLER AKN R-210	Disregard GS indications.	PUCID I-AKN 9.8	One Minute Holding Pattern
		ZARLU I-AKN 2.5 WULAK I-AKN 0.6 FELUM I-AKN 6.4 CICAR I-AKN 3.8	$\leq 3.10^\circ$ TCH 45	121° → 4500 ← 301° 2900	Use I-AKN DME when on the localizer course.
0.7	1.9 NM	1.3 NM	2.6 NM	3.4 NM	
CATEGORY	A	B	C	D	E
S-30	340-1 267 (300-1)				
<b>C</b> CIRCLING	580-1 507 (600-1)	580-1½ 507 (600-1½)	900-2¾ 827 (900-2¾)	960-3 887 (900-3)	

AK, 26 DEC 2024 to 20 FEB 2025

AK, 26 DEC 2024 to 20 FEB 2025