

WAAS CH 72608 W12A	APP CRS 121°	Rwy Idg TDZE 62 Apt Elev 73	8501
--	------------------------	---	-------------

RNAV (GPS) RWY 12

KING SALMON (AKN)(PAKN)

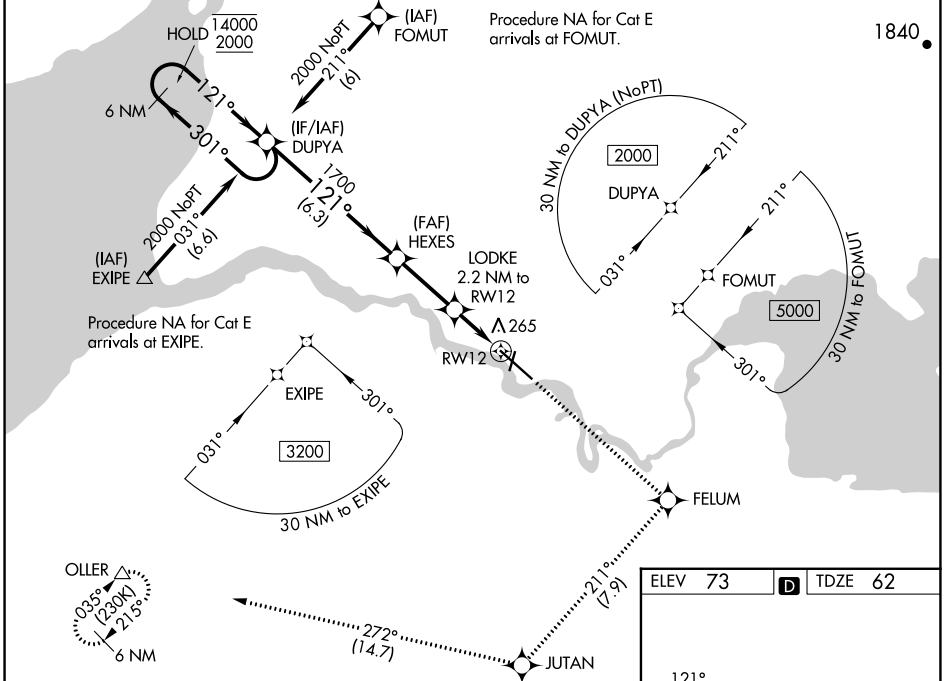
RNP APCH-GPS.

⚠ For uncompensated Baro-VNAV systems, procedure NA below -18°C or above 54°C.
⚠ For inop ALS, increase LPV Cat E visibility to RVR 4000, increase LNAV/VNAV all Cats visibility to RVR 5000 and increase LNAV Cat E visibility to 1½ SM. When control tower closed, LPV, LNAV/VNAV and LNAV visibility RVR 5000. When control tower closed, inop table does not apply to LPV, LNAV/VNAV and LNAV Cats A/B.
 # RVR 1800 authorized with use of FD or AP or HUD to DA (NA when control tower closed).

MALS R

MISSED APPROACH: Climb to 3000 direct FELUM and on track 211° to JUTAN and on track 272° to OLLER and hold.

ATIS 128.8	ANCHORAGE CENTER 124.8 354.0	KING SALMON TOWER* 118.3 279.5	GND CON 121.9	UNICOM 122.95	CTAF 121.9 352.05
----------------------	--	--	-------------------------	-------------------------	-----------------------------



VGSi and RNAV glidepath not coincident (VGSi Angle 3.00/TCH 66).		3000	FELUM	tr 211°	JUTAN	tr 272°	OLLER
6 NM Holding Pattern		DUPYA		HEXES		LODKE 2.2 NM to RW12	
GP 3.00° TCH 55		*820		*LNAV only		RW12	
14000 2000		1700		1.2 NM		1.2 NM	
6.3 NM		2.8 NM		1 NM		1.2 NM	

CATEGORY	A	B	C	D	E
LPV DA#	262/24 200 (200-½)				
LNAV/VNAV DA	426/35 364 (400-¾)				
LNAV MDA	520/24 458 (500-½)		520/45 458 (500-¾)		
CIRCLING	580-1 507 (600-1)		580-1½ 900-2¾		960-3 887 (900-3)

MIRL Rwy 18-36
HIRL Rwy 12-30

AK, 26 DEC 2024 to 20 FEB 2025

AK, 26 DEC 2024 to 20 FEB 2025