

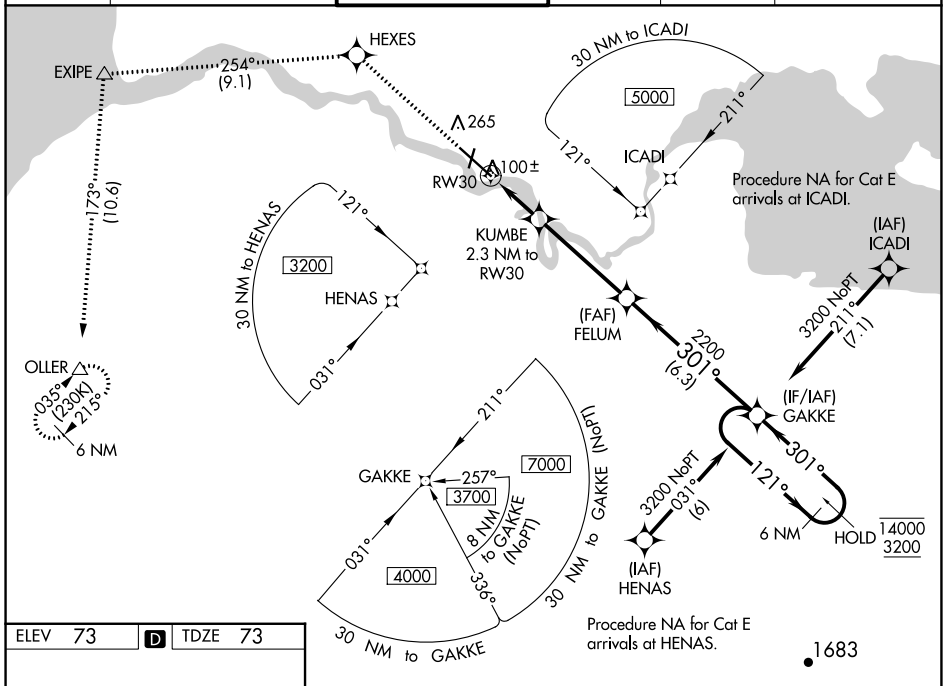
WAAS CH <b>77908</b> <b>W30A</b>	APP CRS <b>301°</b>	Rwy Idg TDZE <b>73</b> Apt Elev <b>73</b>	<b>8501</b>
--	------------------------	---	-------------

# RNAV (GPS) RWY 30

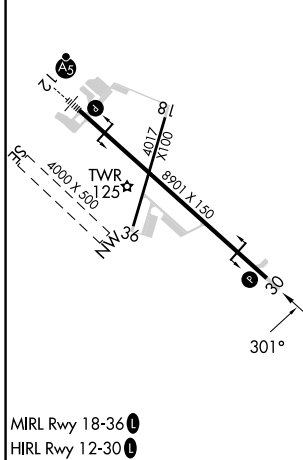
KING SALMON (AKN)(PAKN)

RNP APCH-GPS.	MISSED APPROACH: Climb to 3000 direct HEXES and on track 254° to EXIPE and on track 173° to OLLER and hold.
<p><b>⚠</b> For uncompensated Baro-VNAV systems, LNAV/VNAV NA below -19°C or above 54°C. When control tower closed, increase LPV and LNAV/VNAV visibility all Cats to 1 SM.</p>	

ATIS <b>128.8</b>	ANCHORAGE CENTER <b>124.8 354.0</b>	KING SALMON TOWER* <b>118.3 279.5</b>	GND CON <b>121.9</b>	UNICOM <b>122.95</b>	CTAF <b>121.9 352.05</b>
----------------------	--	--	-------------------------	-------------------------	-----------------------------



ELEV 73	<b>D</b>	TDZE 73
---------	----------	---------



3000	↑	HEXES	tr 254°	EXIPE	tr 173°	OLLER	
*RNAV only		KUMBE 2.3 NM to RW30		FELUM		GAKKE 6 NM Holding Pattern	
RW30		*0.8 NM to RW30		2200		14000 3200	
0.8 NM		1.5 NM		4.2 NM		6.3 NM	
GP 3.00°	TCH 45						
CATEGORY	A	B	C	D	E		
LPV DA	273-¾			200 (200-¾)			
LNAV/VNAV DA	323-¾			250 (300-¾)		376-7/8 303 (400-7/8)	
LNAV MDA	360-1			287 (300-1)			
<b>C</b> CIRCLING	580-1 507 (600-1)		580-1½ 507 (600-1½)		900-2¾ 827 (900-2¾)		960-3 887 (900-3)

AK, 26 DEC 2024 to 20 FEB 2025

AK, 26 DEC 2024 to 20 FEB 2025