

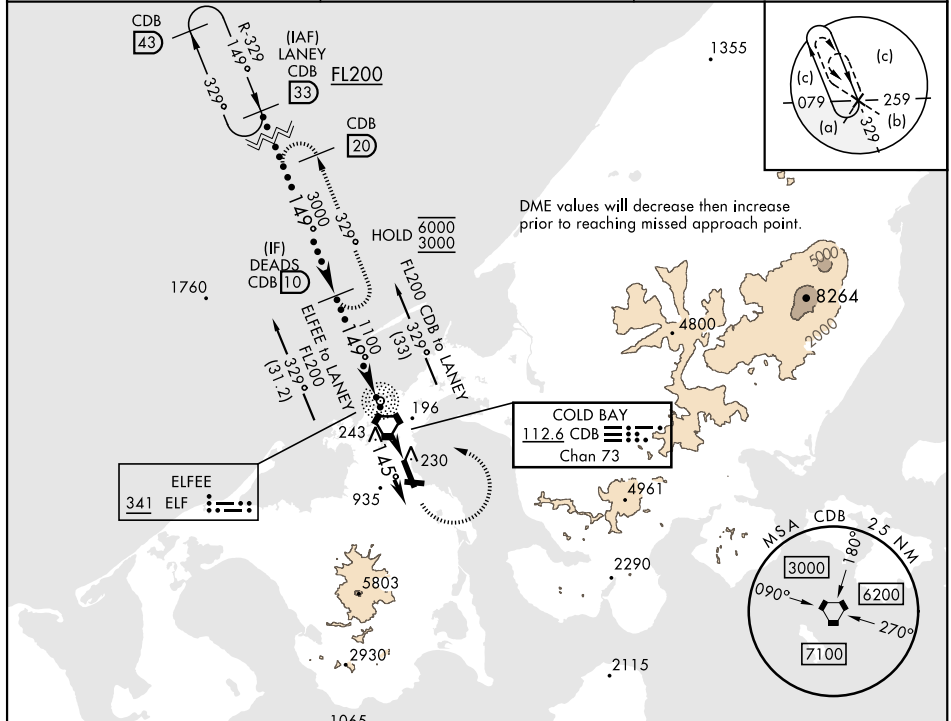
COLD BAY, ALASKA

HI-VOR or TACAN RWY 15

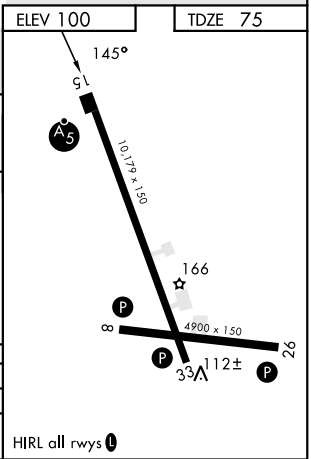
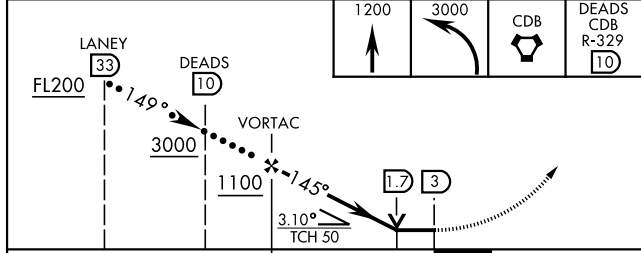
VORTAC CDB 112.6 Chan 73	APCH CRS 145°	Rwy Idg 10,179 TDZE 75 Arprt Elev 100	AL-1241 [USAF]	COLD BAY (CDB) (PACD)
--	-------------------------	--	----------------	-----------------------

DME required	MALS R A5	MISSED APPROACH: Climb to 1200, then climbing left turn to 3000 direct CDB VORTAC, then on CDB R-329 to DEADS/CDB 10 DME and hold.
--------------	---------------------	--

ANCHORAGE CENTER 118.5 278.3	COLD BAY RADIO 123.6 (CTAF) 0	ASOS 135.75
--	--	-----------------------



EMERG SAFE ALT 100 NM 11,600	ELEV 100	TDZE 75
------------------------------	----------	---------



CATEGORY	C	D	E
S-15*	540/50	465	(500-1)
CIRCLING**	560-1½ 460 (500-1½)	860-2½ 760 (800-2½)	940-3 840 (900-3)

COLD BAY, ALASKA 55°12'N-162°44'W COLD BAY (CDB) (PACD)

Amdt 5 02DEC21

HI-VOR or TACAN RWY 15

AK, 26 DEC 2024 to 20 FEB 2025

AK, 26 DEC 2024 to 20 FEB 2025