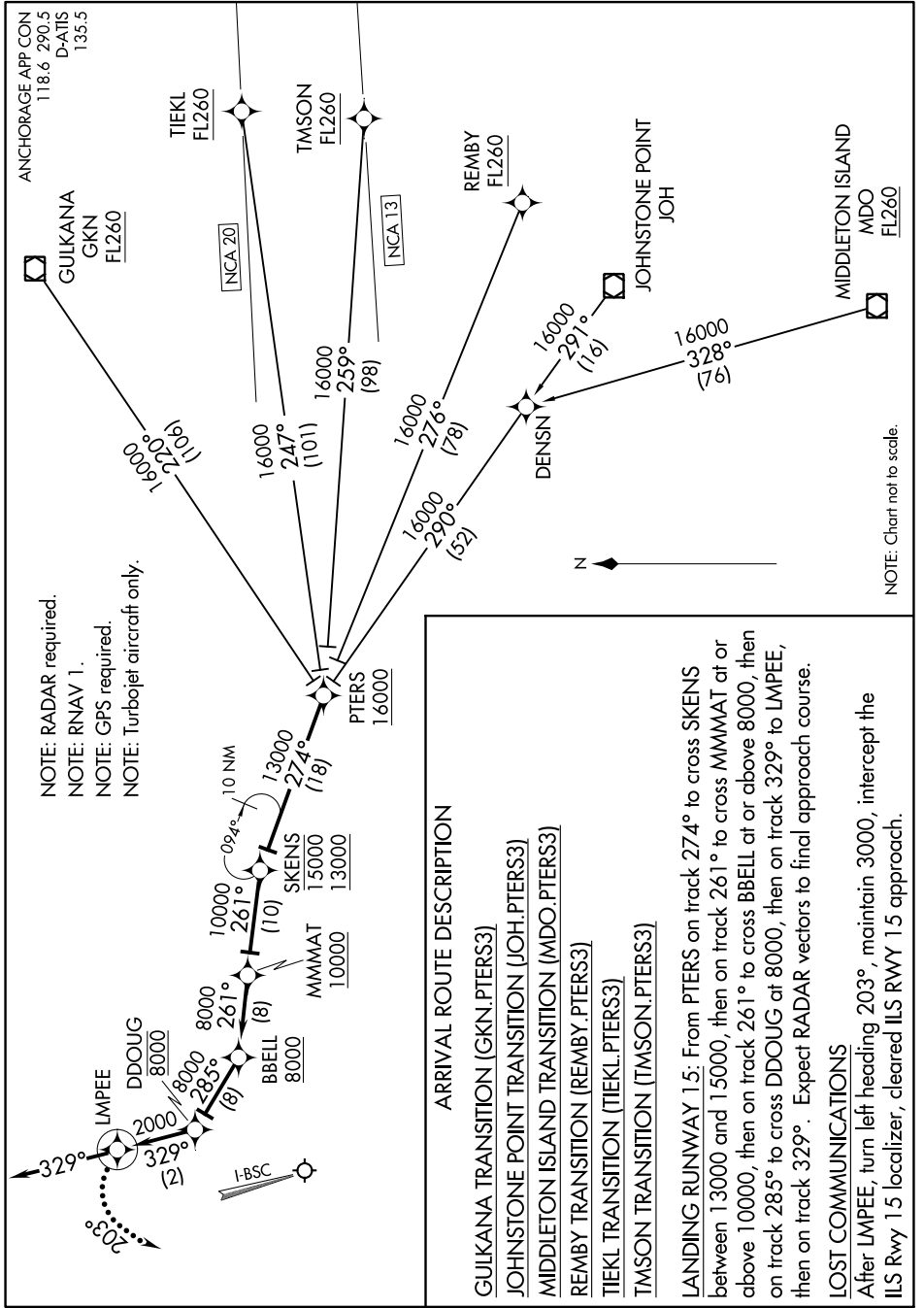


PTERS THREE ARRIVAL (RNAV)

AK, 26 DEC 2024 to 20 FEB 2025



NOTE: RADAR required.
 NOTE: RNAV 1.
 NOTE: GPS required.
 NOTE: Turbojet aircraft only.

ARRIVAL ROUTE DESCRIPTION

GULKANA TRANSITION (GKN.PTERS3)
JOHNSTONE POINT TRANSITION (JOH.PTERS3)
MIDDLETON ISLAND TRANSITION (MDO.PTERS3)
REMBY TRANSITION (REMBY.PTERS3)
TIEKL TRANSITION (TIEKL.PTERS3)
TMSON TRANSITION (TMSON.PTERS3)

LANDING RUNWAY 15: From PTERS on track 274° to cross SKENS between 13000 and 15000, then on track 261° to cross MMMAT at or above 10000, then on track 285° to cross DDOUG at or above 8000, then on track 329° to LMPEE, then on track 329°. Expect RADAR vectors to final approach course.

LOST COMMUNICATIONS
 After LMPEE, turn left heading 203°, maintain 3000, intercept the ILS Rwy 15 localizer, cleared ILS RWY 15 approach.

AK, 26 DEC 2024 to 20 FEB 2025