

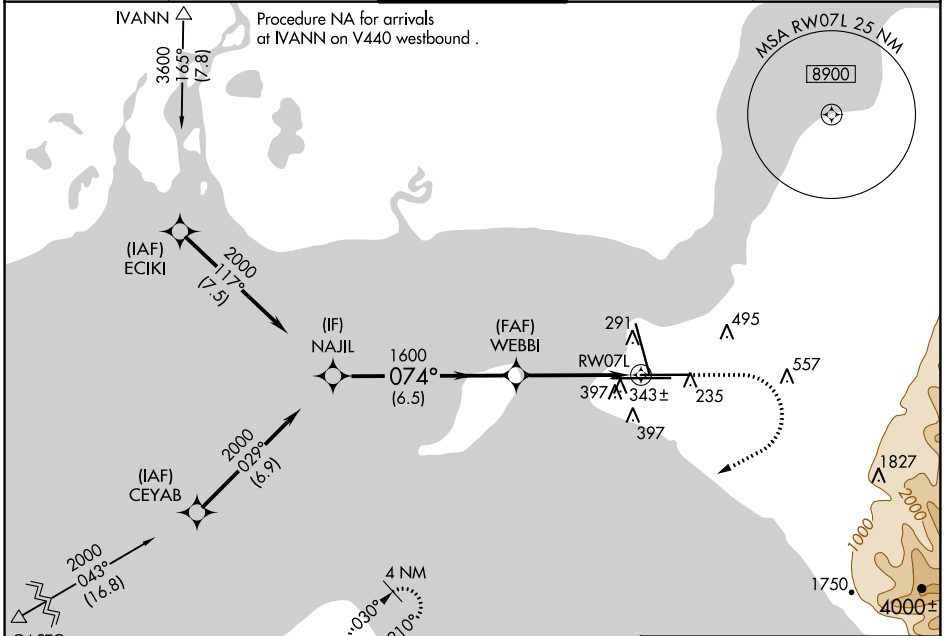
WAAS CH <b>86215</b> <b>W07B</b>	APP CRS <b>074°</b>	Rwy Idg <b>10600</b> TDZE <b>128</b> Apt Elev <b>151</b>
--	------------------------	--

# RNAV (GPS) RWY 7L

TED STEVENS ANCHORAGE INTL (ANC) (PANC)

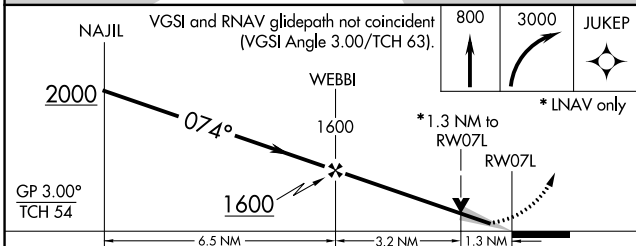
RNP APCH. ▼ ▲ -21°C	For uncompensated Baro-VNAV systems, LNAV/VNAV NA below -18°C or above 54°C. For inop ALS, increase LNAV/VNAV all Cats and LNAV Cat C/D visibility to 1 3/8 SM.	MALSR Ⓜ Ⓜ	MISSED APPROACH: Climb to 800 then climbing right turn to 3000 direct JUKEP and hold.
------------------------------	---	-----------------	---

D-ATIS <b>135.5</b>	ANCHORAGE APP CON <b>118.6 290.5</b>	ANCHORAGE TOWER <b>118.3 257.8</b>	GND CON <b>121.9 338.25</b>	CLNC DEL <b>119.4 323.1</b>
------------------------	---	---------------------------------------	--------------------------------	--------------------------------

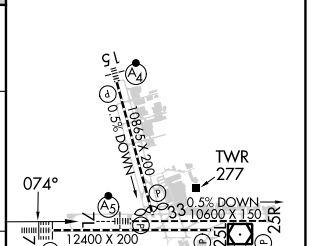


Procedure NA for arrivals at IVANN on V440 westbound.

Procedure NA for arrivals at GASTO on V462 southwest bound.



ELEV 151	<b>D</b> TDZE 128
----------	-------------------



CATEGORY	A	B	C	D
LPV DA		328/18	200 (200-1/2)	
LNAV/VNAV DA		595/50	467 (500-1)	
LNAV MDA	600/24	472 (500-1/2)	600/50	472 (500-1)
<b>C</b> CIRCLING	700-1	549 (600-1)	800-1 3/4 649 (700-1 3/4)	920-2 1/2 769 (800-2 1/2)

REIL Rwy 33  
TDZ/CL Rwsy 7L and 7R  
HIRL all Rwsy

AK, 26 DEC 2024 to 20 FEB 2025

AK, 26 DEC 2024 to 20 FEB 2025