

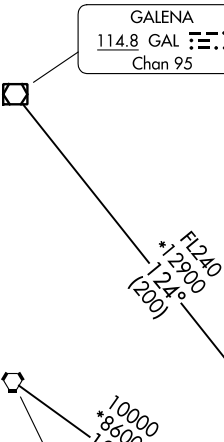
# TAGER NINE ARRIVAL

ANCHORAGE APP CON  
118.6 290.5  
D-ATIS  
135.5

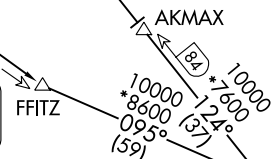
DME required.  
RADAR required.

NENANA  
115.8 ENN :  
Chan 105

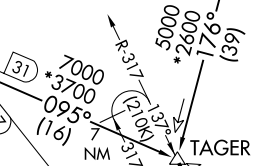
GALENA  
114.8 GAL :  
Chan 95



MC GRATH  
115.5 MCG :  
Chan 102



TALKEETNA  
116.2 TKA :  
Chan 109



BIG LAKE  
112.5 BGQ :  
Chan 72



**ARRIVAL ROUTE DESCRIPTION**

**FFITZ TRANSITION (FFITZ.TAGER9):** From over FFITZ on BGQ R-275 to TAGER. Thence . . .

**GALENA TRANSITION (GAL.TAGER9):** From over GAL VOR/DME on GAL R-124 and TED R-304 to AKMAX, then on TED R-304 to ROHHN, then on BGQ R-275 to TAGER. Thence . . .

**MC GRATH TRANSITION (MCG.TAGER9):** From over MCG VORTAC on MCG R-102 to FFITZ, then on BGQ R-275 to TAGER. Thence . . .

**PUYVO TRANSITION (PUYVO.TAGER9):** From over PUYVO on ENN R-171 and TKA R-352 to TKA VOR/DME, then on TKA R-176 to TAGER. Thence . . .

**TALKEETNA TRANSITION (TKA.TAGER9):** From over TKA VOR/DME on TKA R-176 to TAGER. Thence . . .

. . . from over TAGER on TED R-317 to TED VOR/DME at 5000. Expect RADAR vectors to final approach course after TAGER.

ANCHORAGE  
113.15 TED :  
Chan 78(Y)

5000  
Ldg PANC

NOTE: Chart not to scale.

# TAGER NINE ARRIVAL

AK, 26 DEC 2024 to 20 FEB 2025

AK, 26 DEC 2024 to 20 FEB 2025