

# ILS or LOC/DME RWY 14

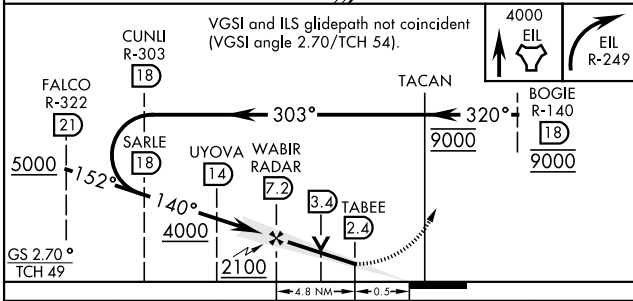
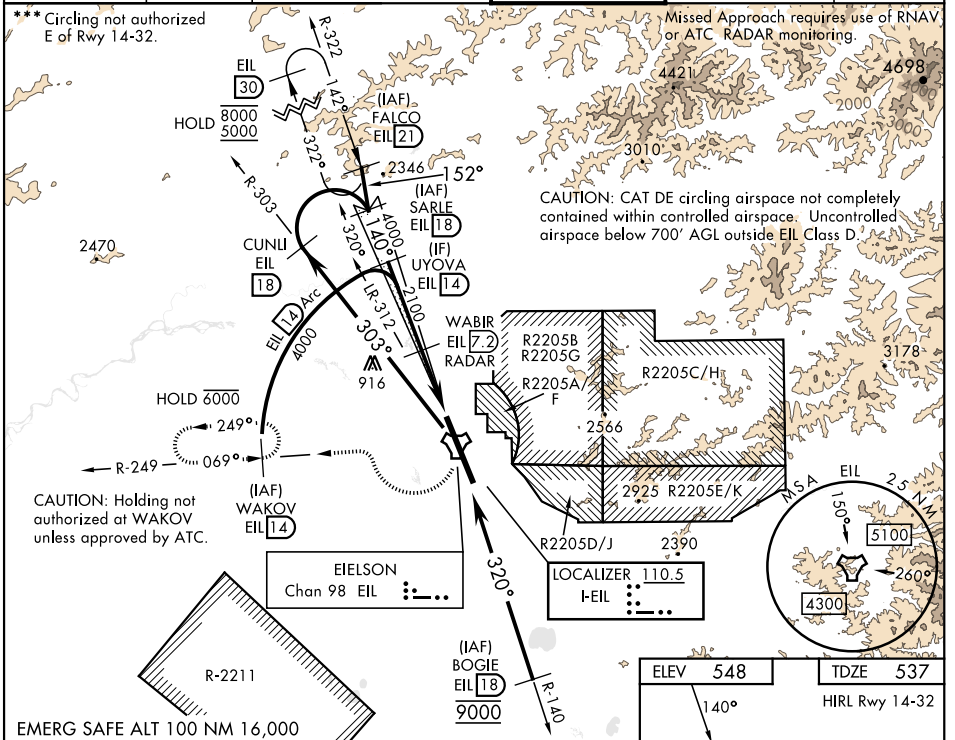
LOC I-EIL <b>110.5</b>	APCH CRS <b>140°</b>	Rwy ldg <b>14,530</b> TDZE <b>537</b> Arpt Elev <b>548</b>
---------------------------	-------------------------	------------------------------------------------------------------

[USAF]

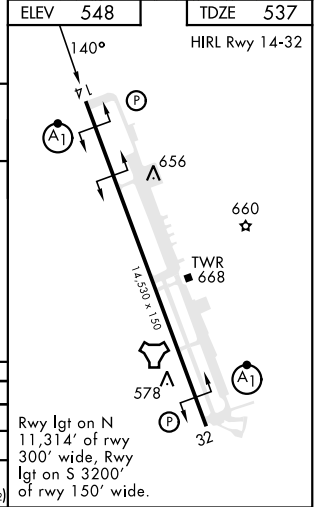
EIELSON AFB (PAEI)

RADAR or DME required.		ALSF-1	MISSED APPROACH: Climb to 4000 direct EIL TACAN, continue climbing right turn to intercept EIL R-249 to WAKOV and hold. Continue climb-in-hold to 4000.
<p>▼ * When ALS inop, incr RVR to 40, and vis to 3/4 mile.          ** When ALS inop, incr CAT AB RVR to 55, and vis to 1 mile; CAT CDE vis to 1 1/8 miles.</p>			

ATIS ★ <b>119.9 273.5</b>	ASOS <b>118.525</b>	FAIRBANKS APP CON <b>127.1 251.1 360°-179°</b> <b>125.35 363.2 180°-359°</b>	TOWER ★ <b>127.2 352.05</b>	GND CON <b>121.8 275.8</b>	CLNC DEL <b>343.7</b>
------------------------------	------------------------	------------------------------------------------------------------------------------	--------------------------------	-------------------------------	--------------------------



CATEGORY	A	B	C	D	E
S-ILS 14 *	737/24		200	(200-1/2)	
S-LOC 14 **	1000/24 463 (500-1/2)		1000/50	463 (500-1)	
CIRCLING ***	1000-1 452 (500-1)	1040-1 492 (500-1)	1040-1 1/2 492 (500-1 1/2)	1280-2 1/4 732 (800-2 1/4)	1280-2 1/2 732 (800-2 1/2)



# ILS or LOC/DME RWY 14

AK, 26 DEC 2024 to 20 FEB 2025

AK, 26 DEC 2024 to 20 FEB 2025