

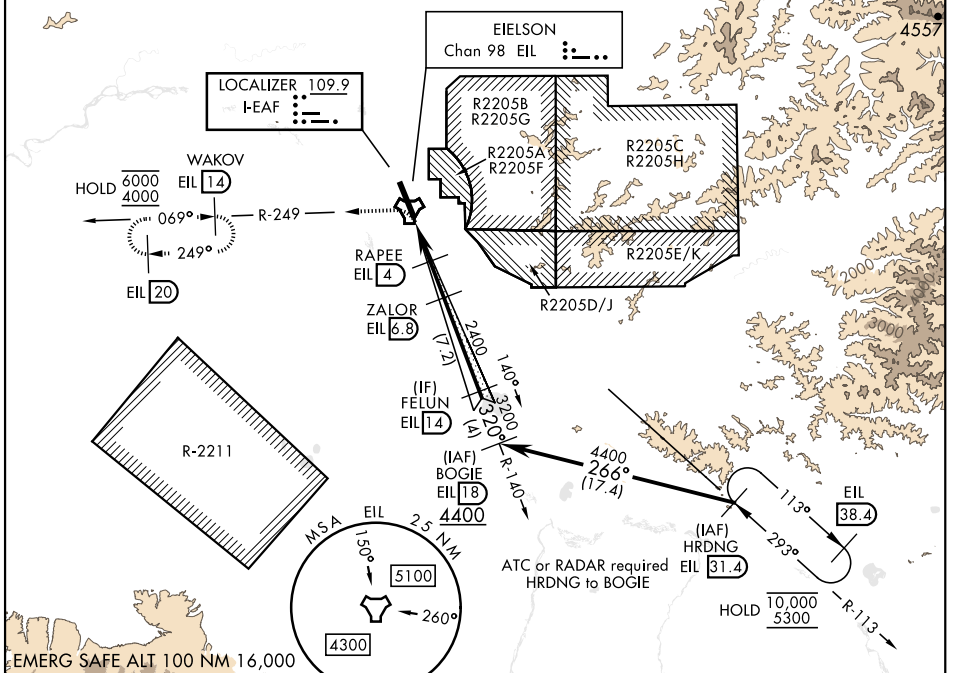
ILS Y or LOC/DME Y RWY 32

LOC I-FAF 109.9	APCH CRS 320°	Rwy lgt 14,530 TDZE 548 Arprt Elev 548	AL-1729 [USAF]	EIELSON AFB (PAEI)
---------------------------	-------------------------	---	----------------	--------------------

▽ * When ALS inop, increase RVR to 40 and vis to ¼ mile.
 ** When ALS inop, increase CAT AB RVR to 55, vis to 1 mile; CAT CDE RVR to 60, vis to 1½ mile.

ATIS ★ 119.9 273.5	FAIRBANKS APP CON 127.1 251.1 360° - 179° 125.35 363.2 180° - 359°	TOWER ★ 127.2 352.05	GND CON 121.8 275.8	CLNC DEL 343.7
------------------------------	--	--------------------------------	-------------------------------	--------------------------

*** Circling not authorized E of Rwy 14-32.
 Missed approach requires the use of RNAV or ATC RADAR monitoring.



ELEV 548	TDZE 548
-----------------	-----------------

HIRL Rwy 14-32

Rwy lgt on N 11,314' of rwy 300' wide, rwy lgt on S 3200' of rwy 150' wide.

VGSI and ILS glidepath not coincident (VGSI angle 2.70/TCH 44).

4000 WAKOV R-249 EIL R-249 14

3200 GS 2.70° TCH 50

CATEGORY	A	B	C	D	E
S-ILS 32*	748/24 200 (200-½)				
S-LOC 32**	960/24 412 (500-½)	960/40 412 (500-¾)			
CIRCLING ***	1000-1 452 (500-1)	1040-1 492 (500-1)	1040-1½ 492 (500-1½)	1280-2¼ 732 (800-2¼)	1280-2½ 732 (800-2½)

ILS Y or LOC/DME Y RWY 32

AK, 26 DEC 2024 to 20 FEB 2025

AK, 26 DEC 2024 to 20 FEB 2025