

YIGO, GUAM I, GUAM

RNAV (GPS) RWY 24R

APCH CRS 244°	Rwy Idg TDZE Arprt Elev	10,528 617 617
-------------------------	-------------------------------	---

- (USAF)

ANDERSEN AFB (PGUA)

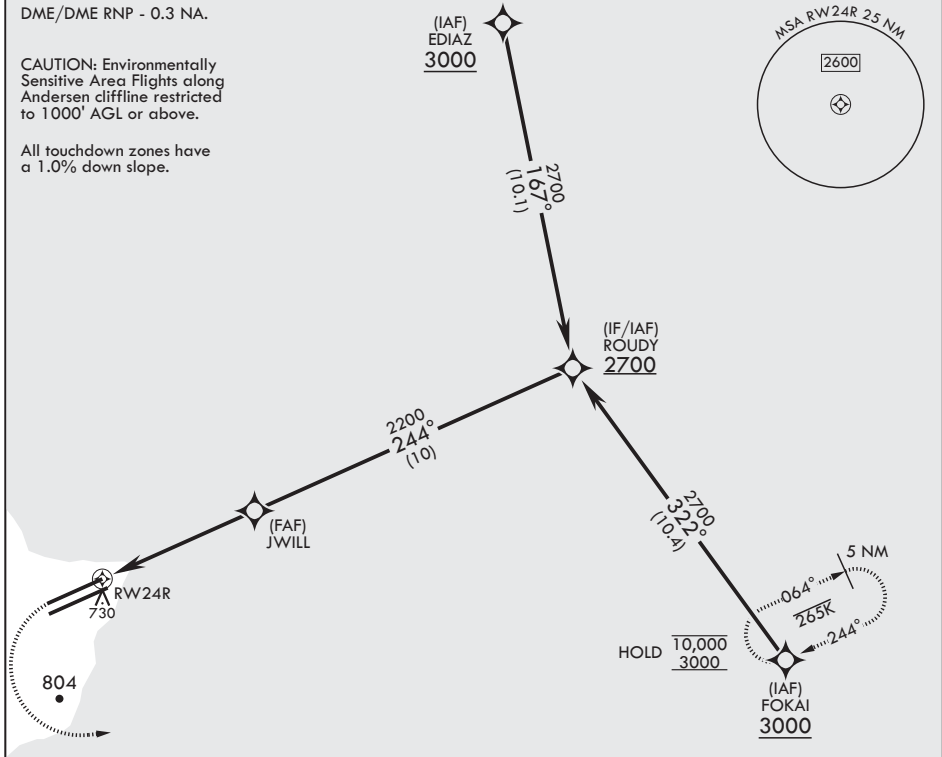
RNP APCH	ALSF-1	MISSED APPROACH: Climb to 1200, then climbing left turn to 3000 direct FOKAI and hold.
<p>▼ * When ALS inop, increase RVR to 55, vis to 1 mile. ** Circling not authorized NW of Rwy 06L-24R.</p>		

ATIS 118.175 254.325	GUAM APP CON/DEP CON 119.8 269.0	TOWER 126.2 233.7	GND CON 121.7 275.8	CLNC DEL 126.725 256.7
--------------------------------	--	-----------------------------	-------------------------------	----------------------------------

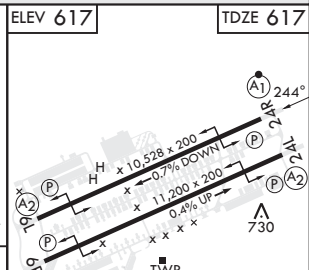
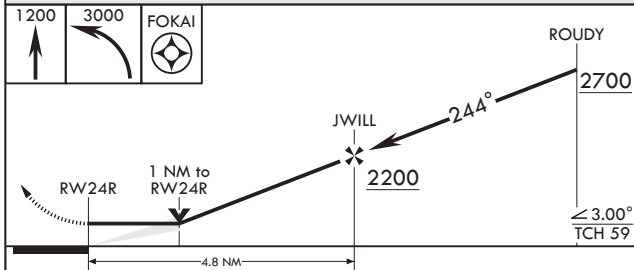
DME/DME RNP - 0.3 NA.

CAUTION: Environmentally Sensitive Area Flights along Andersen cliffline restricted to 1000' AGL or above.

All touchdown zones have a 1.0% down slope.



EMERG SAFE ALT 100 NM 2900



CATEGORY	A	B	C	D	E
LNAV MDA*	960/24 343 (400-½)	960/30 343 (400-¾)	960/30 343 (400-¾)	960/30 343 (400-¾)	960/30 343 (400-¾)
CIRCLING**	1060-1 443 (500-1)	1080-1 463 (500-1)	1240-1¾ 623 (700-1¾)	1240-2 623 (700-2)	1240-2¼ 623 (700-2¼)



YIGO, GUAM I, GUAM

13°35'N - 144°56'E

ANDERSEN AFB (PGUA)

Amdt 1 17JUN21
TERPS

RNAV (GPS) RWY 24R

PAC, 26 DEC 2024 to 20 FEB 2025

PAC, 26 DEC 2024 to 20 FEB 2025