

YIGO, GUAM I, GUAM

# RNAV (GPS) RWY 06L

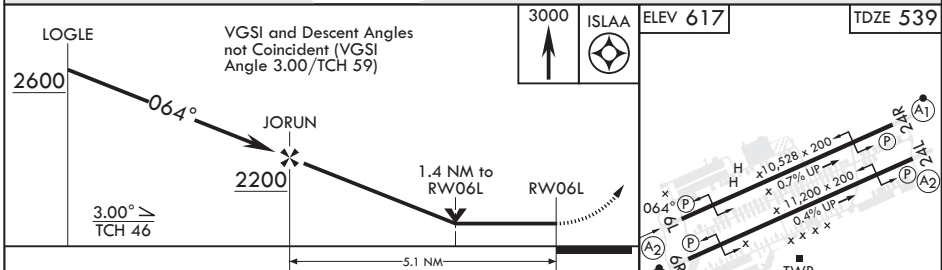
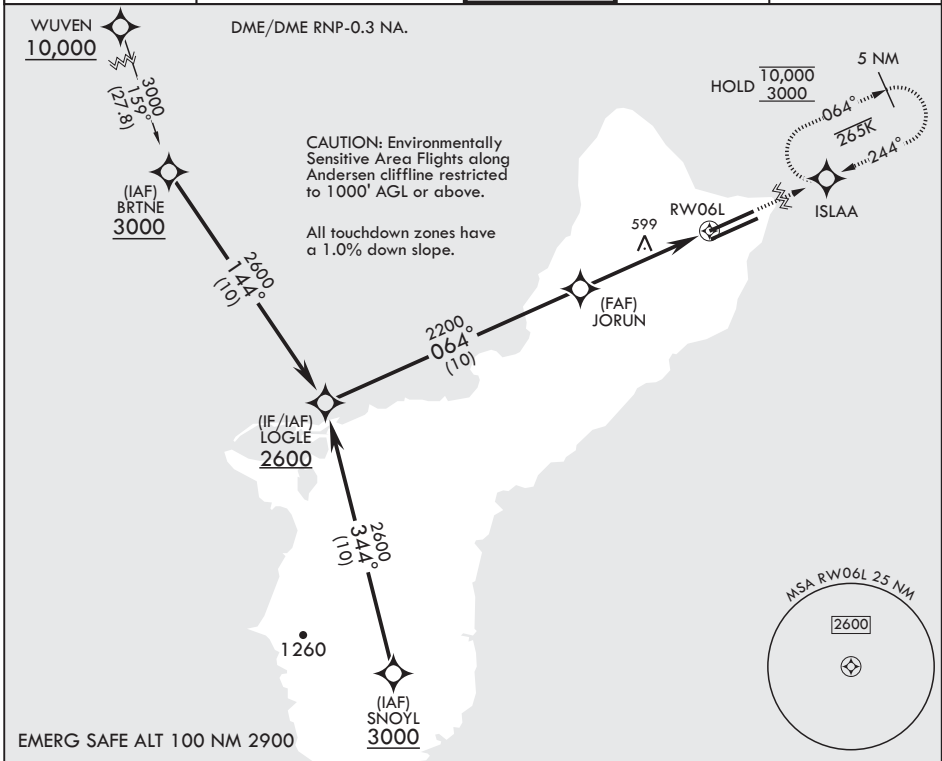
APCH CRS	Rwy Idg	10,528
064°	TDZE	539
	Arprt Elev	617

(USAF)

ANDERSEN AFB (PGUA)

RNP APCH	SALS	MISSED APPROACH: Climb to 3000 direct ISLAA and hold.
<p>▼ * When ALS inop increase CAT AB RVR to 55, vis to 1 mile; CAT CDE vis to 1 3/8 miles.                  ** Circling not authorized NW of Rwy 06L-24R.                  Circling not authorized to Rwys 06L and 24R.</p>		

ATIS	GUAM APP CON/DEP CON	TOWER	GND CON	CLNC DEL
118.175 254.325	119.8 269.0	126.2 233.7	121.7 275.8	126.725 256.7



CATEGORY	A	B	C	D	E
LNAV MDA*	1040/40	501 (500-3/4)	1040-1 1/4	501	(500-1 1/4)
CIRCLING**	1060-1 443 (500-1)	1080-1 463 (500-1)	1240-1 3/4 623 (700-1 3/4)	1240-2 623 (700-2)	1240-2 1/4 623 (700-2 1/4)

HIRL all Rwys

YIGO, GUAM I, GUAM

13°35'N - 144°56'E

ANDERSEN AFB (PGUA)

Amdt 1 17JUN21  
TERPS

# RNAV (GPS) RWY 06L

PAC, 26 DEC 2024 to 20 FEB 2025

PAC, 26 DEC 2024 to 20 FEB 2025