

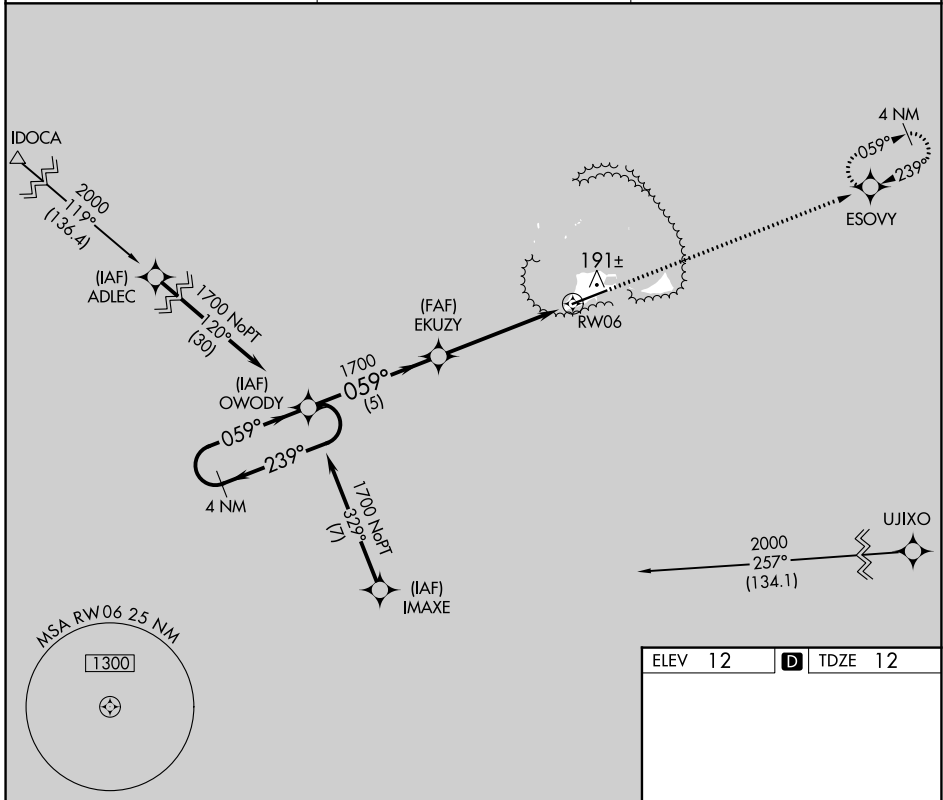
APP CRS	Rwy Idg	<b>7800</b>
<b>059°</b>	TDZE	<b>12</b>
	Apt Elev	<b>12</b>

# RNAV (GPS) RWY 6

HENDERSON FLD (MDY) (PMDY)

RNP APCH.	MISSED APPROACH: Climb to 1700 direct ESOVY WP and hold.
<p><b>⚠</b> No controlled airspace below 5500. When local altimeter setting not received procedure NA. Rwy 6 helicopter visibility reduction below 3/4 SM NA.</p>	

AWOS-3P <b>118.325</b>	MIDWAY RADIO <b>126.2 257.8</b>	CTAF <b>122.9</b>
---------------------------	------------------------------------	----------------------



PAC, 26 DEC 2024 to 20 FEB 2025

PAC, 26 DEC 2024 to 20 FEB 2025

