

18200

STOFF TWO DEPARTURE (STOFF2•STOFF)

TONOPAH TEST RANGE (KTNX)

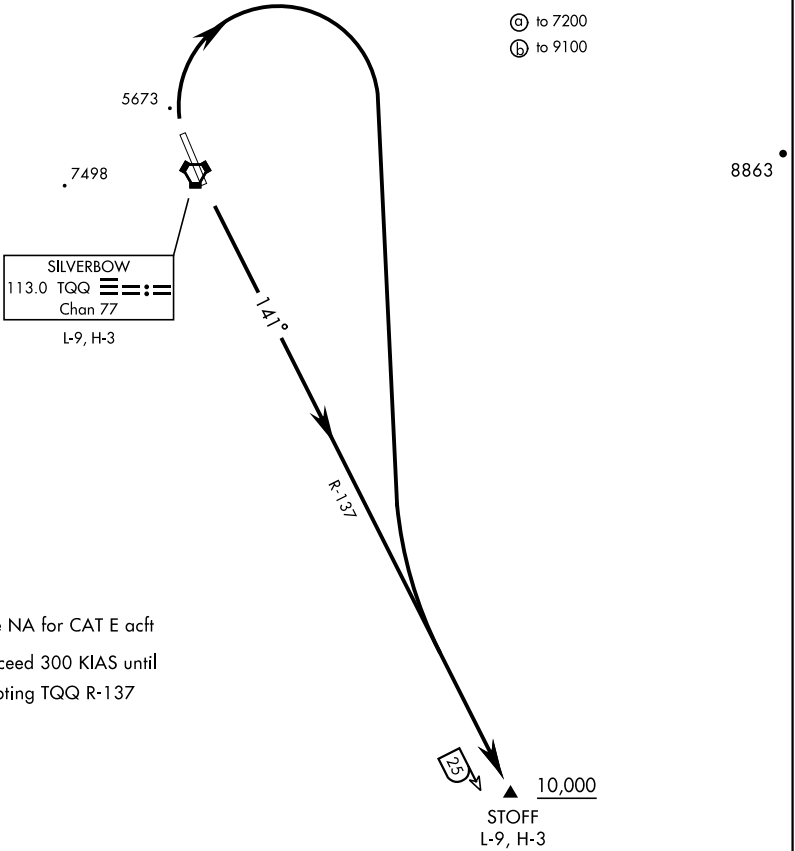
TONOPAH, NEVADA

GND CON
 127.25 335.5
 SILVERBOW TOWER ★
 124.75 257.95
 NELLIS CONTROL
 119.35 254.4

| Rwy | Knots | 60 | 120 | 180 | 240 | 300 | 360 |
|--------|----------|-----|-----|-----|------|------|------|
| 14 (a) | V/V(fpm) | 205 | 410 | 615 | 820 | 1025 | 1230 |
| 32 (b) | V/V(fpm) | 260 | 520 | 780 | 1040 | 1300 | 1560 |

MINIMUM CLMB RATE

- (a) to 7200
- (b) to 9100



Procedure NA for CAT E acft
 Do not exceed 300 KIAS until
 intercepting TQQ R-137

SW-4, 26 DEC 2024 to 23 JAN 2025

SW-4, 26 DEC 2024 to 23 JAN 2025



DEPARTURE ROUTE DESCRIPTION

TAKE-OFF RWY 14: Climb heading 141° to intercept TQQ VORTAC R-137 to STOFF, cross STOFF at or above 10,000.

TAKE-OFF RWY 32: Climbing right turn to intercept TQQ VORTAC R-137 to STOFF, cross STOFF at or above 10,000.

STOFF TWO DEPARTURE (STOFF2•STOFF)

TONOPAH, NEVADA
 TONOPAH TEST RANGE (KTNX)