

18200

TUMBE ONE (RNAV) DEPARTURE (TUMBE1 · TUMBE)

TONOPAH TEST RANGE (KTNX)

TONOPAH, NEVADA

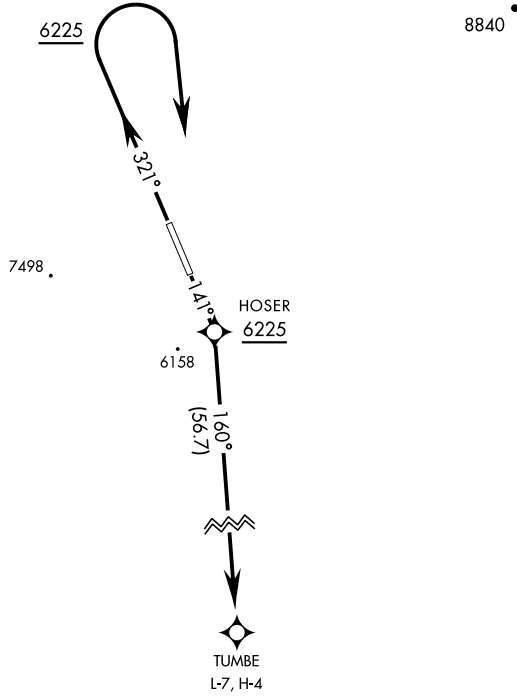
GND CON
 127.25 335.5
 SILVERBOW TOWER ★
 124.75 257.95
 NELLIS CONTROL
 119.35 254.4

SHL-3188 [USAF]

Rwy	Knots	60	120	180	240	300	360
14 (a)	V/V(fpm)	300	600	900	1200	1500	1800
32 (b)	V/V(fpm)	265	530	795	1060	1325	1590

Minimum Climb Rate

- (a) to 10,700
- (b) to 5900



GPS REQUIRED

For use by E/F/G and R (RNP 2.0)
 equipped A/C only.

DEPARTURE ROUTE DESCRIPTION

TAKE-OFF RWY 14: Fly heading 141°, at 6225 (HOSER) turn right direct TUMBE.

TAKE-OFF RWY 32: Fly heading 321°, at 6225 turn right direct TUMBE.

TUMBE ONE (RNAV) DEPARTURE (TUMBE1 · TUMBE)

TONOPAH, NEVADA

TONOPAH TEST RANGE (KTNX)

SW-4, 26 DEC 2024 to 23 JAN 2025

SW-4, 26 DEC 2024 to 23 JAN 2025