

# VOR/DME Z RWY 14

VORTAC TQQ <b>113.0</b> Chan <b>77</b>	APCH CRS <b>145°</b>	Rwy Idg THRE <b>5473</b> Arprt Elev <b>5550</b>
--	-------------------------	---

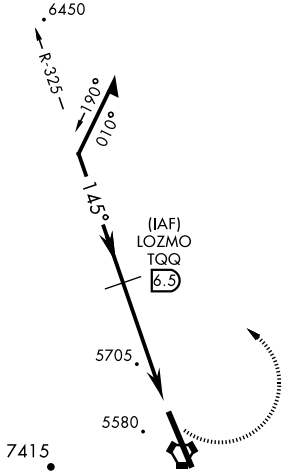
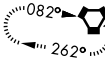
AL-3188 [USAF]

TONOPAH TEST RANGE (KTNX)

<p><b>V</b> * Circling not authorized W of Rwy 14-32.</p>	<p>ALSIF-1</p>	<p>MISSED APPROACH: Turn left, climb to 11,000 direct to TPH VORTAC and hold. Continue climb in holding to 11,000.</p>
---	----------------	--

<p>AWOS <b>113.0</b></p>	<p>NELLIS CONTROL <b>119.35 254.4</b></p>	<p>SILVERBOW TOWER* <b>124.75 257.95</b> <b>0</b></p>	<p>GND CON <b>127.25 335.5</b></p>
------------------------------	---	---	--

TONOPAH  
116.0 TPH  
Chan 107



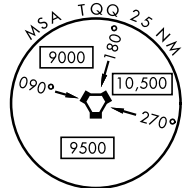
When VGSI inop, procedure NA at night.

USAF ONLY: When Rwy 14 VGSI inop, straight-in Rwy 14 authorized at night with MAJCOM A3 approval.

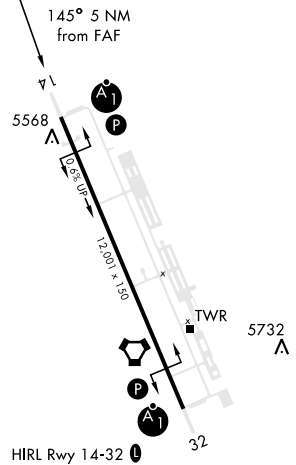
CAUTION: When Rwy 32 VGSI inop, circling to Rwy 32 NA at night.

CAUTION: High terrain 3 NM W of Rwy. Unlit terrain 5558' MSL, 200' prior to Rwy 32 threshold, 200' left of centerline.

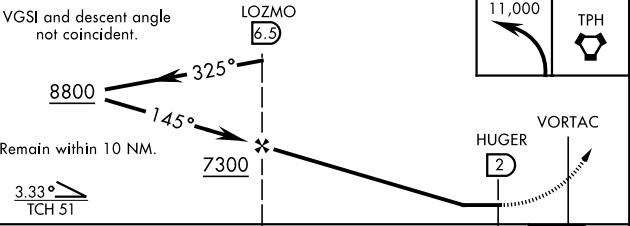
SILVERBOW  
113.0 TQQ  
Chan 77



ELEV 5550	THRE 5473
-----------	-----------



EMERG SAFE ALT 100 NM 16,600 FROM TQQ



CATEGORY	A	B	C	D	E
S-14	5960/24 487 (500-1/2)		5960/50 487 (500-1)	NOT AUTHORIZED	
<b>C</b> CIRCLING*	6040-1 490 (500-1)		6040-1 1/2 490 (500-1 1/2)	NOT AUTHORIZED	

# VOR/DME Z RWY 14

SW-4, 26 DEC 2024 to 23 JAN 2025

SW-4, 26 DEC 2024 to 23 JAN 2025