

WAAS CH <b>99440</b> W <b>19B</b>	APP CRS <b>193°</b>	Rwy Idg TDZE <b>4000</b> <b>124</b> Apt Elev <b>129</b>
-----------------------------------------	------------------------	------------------------------------------------------------------

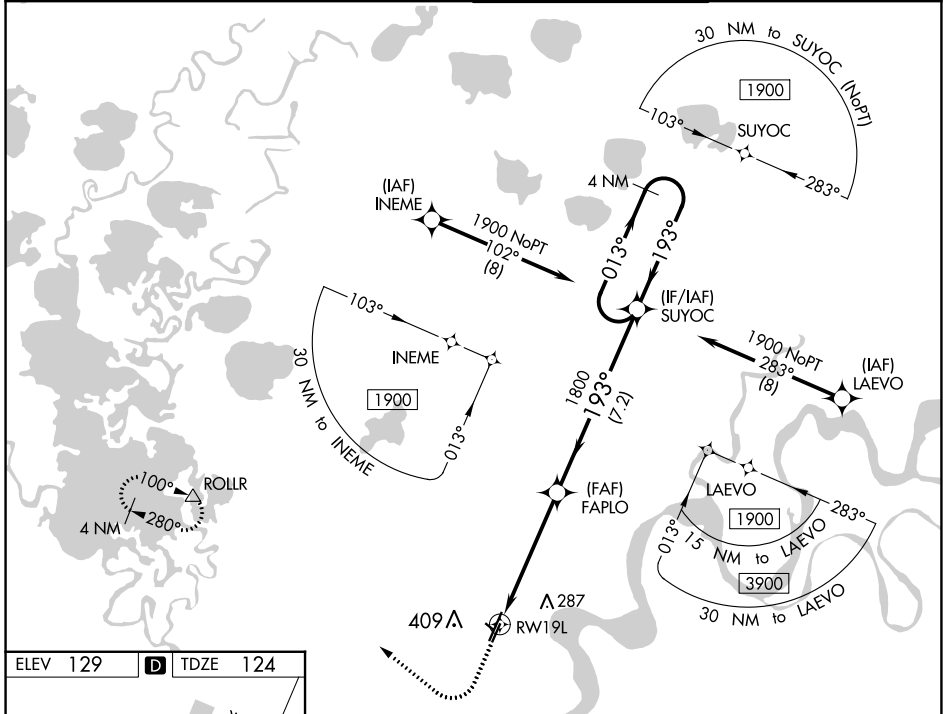
# RNAV (GPS) RWY 19L

BETHEL (BET)(PABE)

**▽** For uncompensated Baro-VNAV systems, LNAV/VNAV NA below -19°C (-2°F) or above 54°C (130°F). Circling NA west of Rwy 1L-19R. DME/DME RNP-0.3 NA.

MISSED APPROACH: Climb to 600 then climbing right turn to 2000 direct ROLLR and hold.

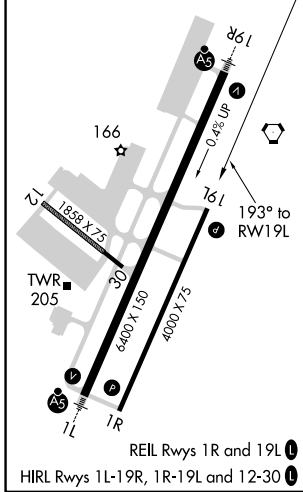
ATIS <b>119.8</b>	ANCHORAGE CENTER <b>125.2 372.0</b>	BETHEL TOWER ★ <b>118.7</b> (CTAF) <b>0</b>	GND CON <b>121.7</b>
----------------------	----------------------------------------	------------------------------------------------	-------------------------



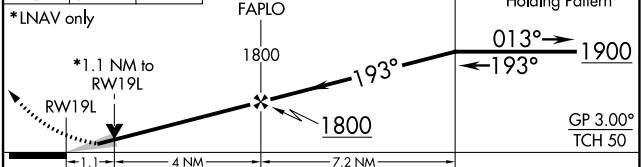
AK, 26 DEC 2024 to 20 FEB 2025

AK, 26 DEC 2024 to 20 FEB 2025

ELEV <b>129</b>	<b>D</b>	TDZE <b>124</b>
-----------------	----------	-----------------



600 2000 ROLLR VGS1 and RNAV glidepath not coincident (VGS1 Angle 3.00/TCH 32).



CATEGORY	A	B	C	D
LPV DA		374-3/4	250 (300-3/4)	
LNAV/VNAV DA		374-3/4	250 (300-3/4)	
LNAV MDA		500-1	376 (400-1)	
<b>CIRCLING</b>	500-1 371 (400-1)	600-1 471 (500-1)	600-1 1/2 471 (500-1 1/2)	680-2 551 (600-2)