

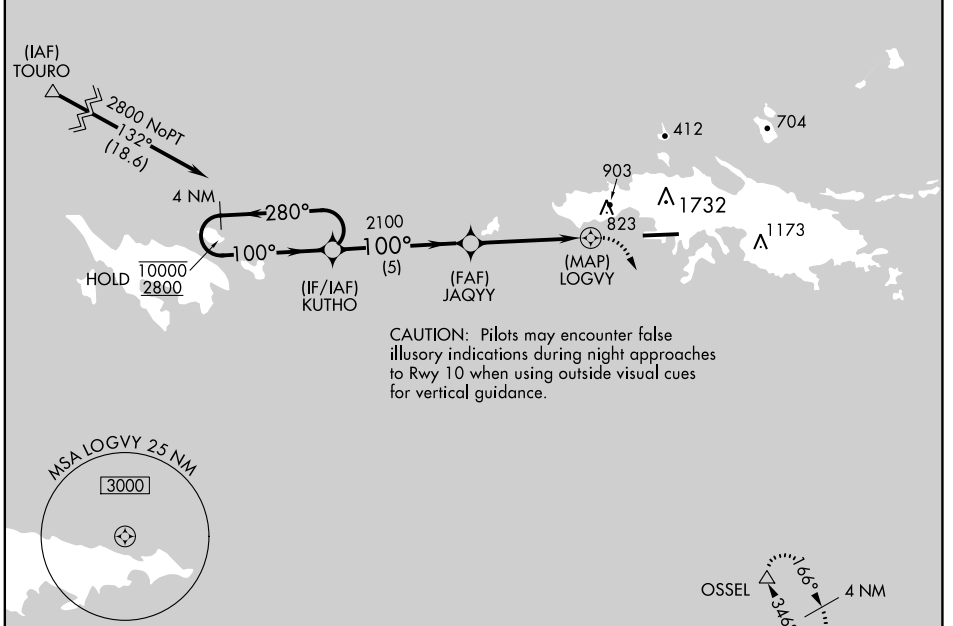
APP CRS 100°	Rwy ldg 6892 TDZE 24 Apt Elev 24
------------------------	---

RNAV (GPS) RWY 10

CYRIL E KING (STT)(TIST)

RNP APCH - GPS.	MISSED APPROACH: Climbing right turn to 2800 direct OSSEL and hold.
<p>▽ Circling NA at night. Circling NA north of Rwy 10-28.</p> <p>▲ Cat A and B missed approach climb gradient is standard.</p>	* Missed approach requires minimum climb of 411 feet per NM to 1900 for Category C/D aircraft.

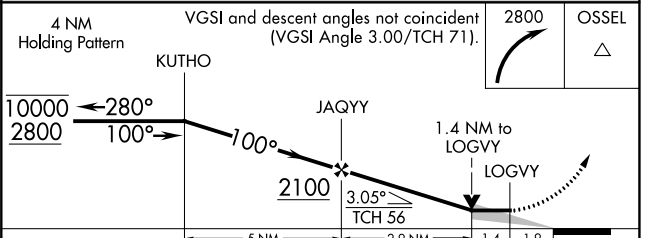
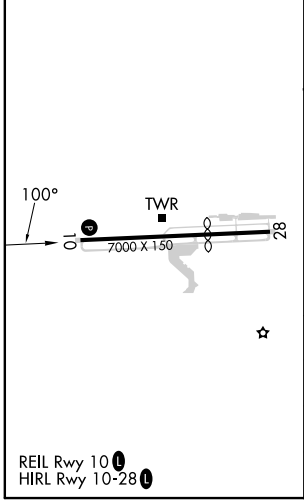
ATIS 124.0	SAN JUAN CENTER 128.65 279.6	ST. THOMAS TOWER ★ 118.8 (CTAF) 0 257.6 118.1 (NORTH OF ISLAND)	GND CON 121.9	UNICOM 122.95
----------------------	--	--	-------------------------	-------------------------



SE-3, 26 DEC 2024 to 23 JAN 2025

SE-3, 26 DEC 2024 to 23 JAN 2025

ELEV 24	D	TDZE 24
----------------	----------	----------------



CATEGORY	A	B	C	D
LNNAV MDA*	NA		1180-3	1156 (1200-3)
LNNAV MDA	1180-2½	1156 (1200-2½)	1560-3	1536 (1600-3)
CIRCLING	1180-2½	1156 (1200-2½)	1560-3	1536 (1600-3)