

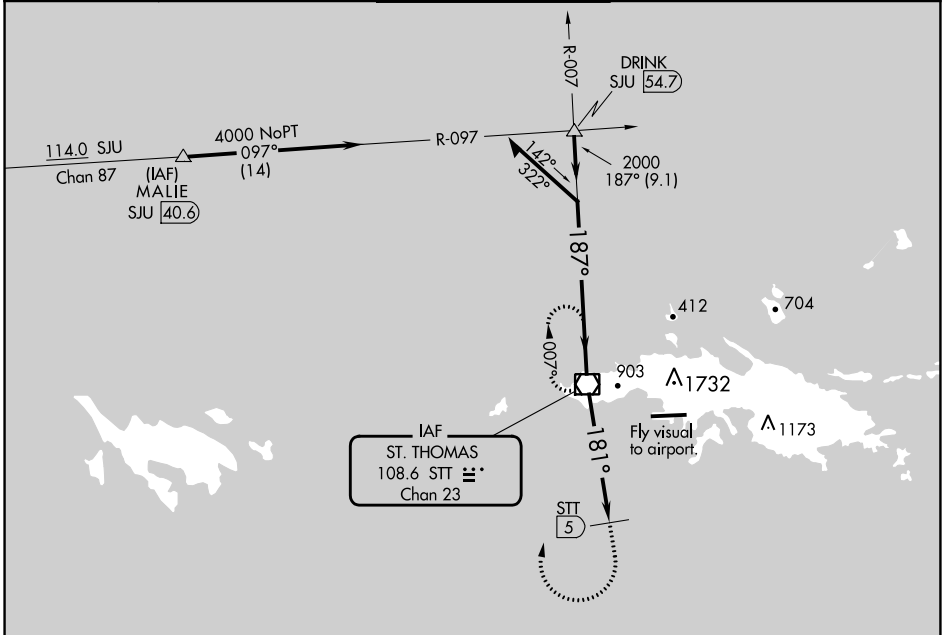
VOR/DME STT <b>108.6</b> Chan <b>23</b>	APP CRS <b>181°</b>	Rwy Idg TDZE Apt Elev <b>N/A</b> <b>24</b>
---	------------------------	---

**VOR-A**

CYRIL E KING (STT)(TIST)

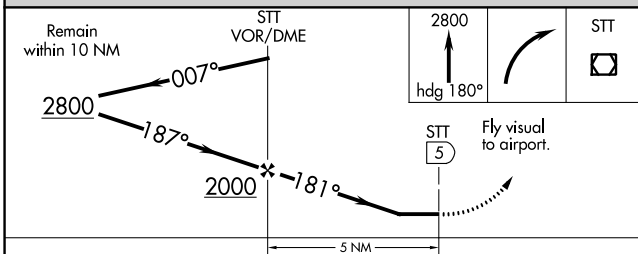
<p><b>⚠</b> CAUTION: High terrain north of Rwy 10-28 extended. Circling NA north of Rwy 10-28. Procedure NA when control tower not in operation. Procedure NA at night.</p>	<p>MISSED APPROACH: If unable to proceed visually to airport upon descent to 1160, climb to 2800 via heading 180°, then right turn direct STT VOR/DME and hold.</p>
---	---

ATIS <b>124.0</b>	SAN JUAN CENTER <b>128.65 279.6</b>	ST. THOMAS TOWER ★ <b>118.8</b> (CTAF) <b>0 257.6</b> <b>118.1</b> (NORTH OF ISLAND)	GND CON <b>121.9</b>	UNICOM <b>122.95</b>
----------------------	--	--	-------------------------	-------------------------



SE-3, 26 DEC 2024 to 23 JAN 2025

SE-3, 26 DEC 2024 to 23 JAN 2025



ELEV 24	<b>D</b>
---------	----------

REIL Rwy 10 **0**  
HIRL Rwy 10-28 **0**

CATEGORY	A	B	C	D
CIRCLING	1160-3	1136 (1200-3)	1480-3	1456 (1500-3)