

MINOT, NORTH DAKOTA

# COPTER RNAV (GPS) RWY 30

WAAS CH 91355 W30A	APCH CRS 298°	Rwy ldg TDZE Arprt Elev	13,198 1646 1666
--------------------------	------------------	-------------------------------	------------------------

AL-5013 (USAF)

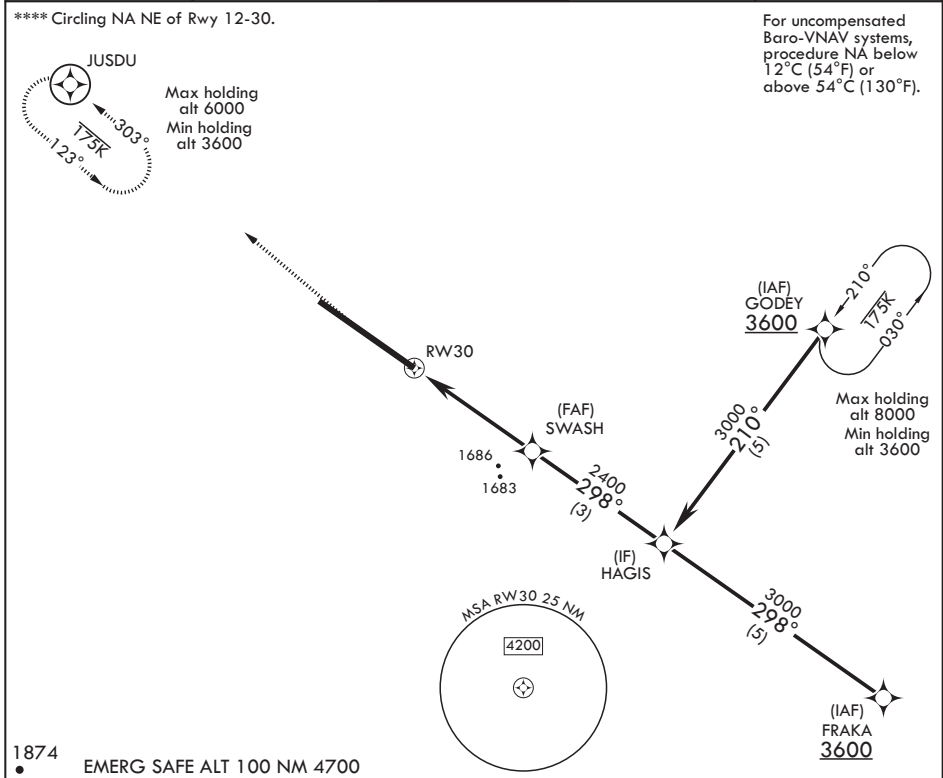
MINOT AFB (KMIB)

\* When ALS inop, increase CAT A RVR to 40, vis to 3/4 mile.  
 \*\* When ALS inop, increase CAT A vis to 1 5/8 miles.  
 \*\*\* When ALS inop, increase CAT A RVR to 55, vis to 1 mile.

ALSF-1

MISSED APPROACH: Climb to 2100 then climbing right turn to 3600 direct JUSDU and hold, continue climb-in-hold to 3600.

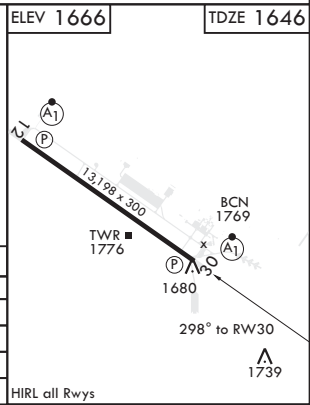
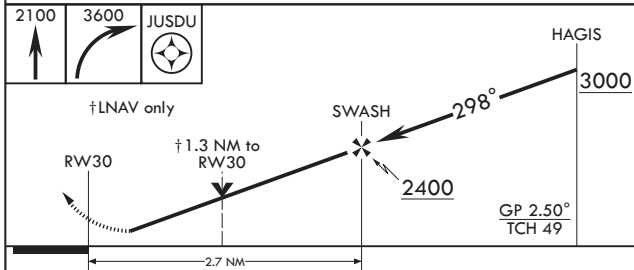
ATIS * 278.8	APP CON 119.6 363.8	TOWER * 120.65 253.5	GND CON 134.0 275.8	CLNC DEL 326.2
-----------------	------------------------	-------------------------	------------------------	-------------------



NC-1, 26 DEC 2024 to 23 JAN 2025

NC-1, 26 DEC 2024 to 23 JAN 2025

1874  
EMERG SAFE ALT 100 NM 4700



CATEGORY	COPTER	
LPV DA *	1846/24	200 (200-1/4)
RNAV/VNAV DA **	2040/60	394 (400-1 1/2)
RNAV MDA ***	2040/24	394 (400-1/2)
<b>C</b> CIRCLING ****	2120-1	454 (500-1)

MINOT, NORTH DAKOTA 48°25'N - 101°21'W MINOT AFB (KMIB)

Orig 19JUL18

# COPTER RNAV (GPS) RWY 30