

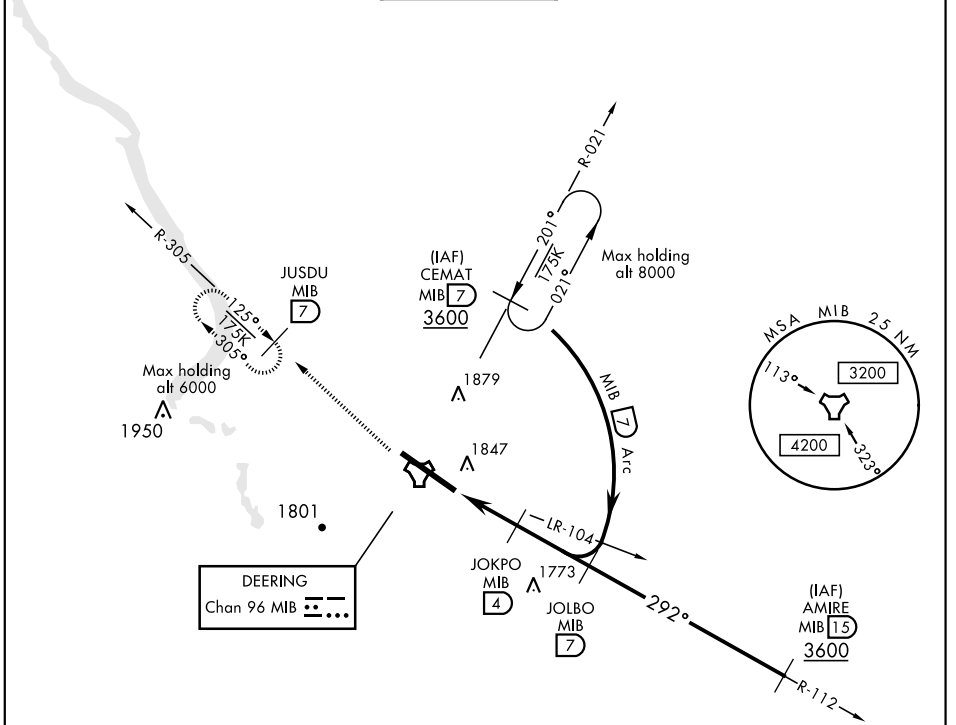
# COPTER TACAN 292°

TACAN MIB Chan <b>96</b>	APCH CRS <b>292°</b>	Rwy ldg <b>13,198</b> TDZE <b>1646</b> Arprt Elev <b>1666</b>	AL-5013 [USAF]	MINOT AFB (KMIB)
-----------------------------	-------------------------	---	----------------	------------------

\* When ALS inop, increase RVR to 28 and vis to ½ mile.

ALSF-1  MISSED APPROACH: Climb to 3600 via MIB TACAN R-305 direct JUSDU and hold.

ATIS ★ <b>278.8</b>	MINOT APP CON <b>119.6 363.8</b>	MINOT TOWER ★ <b>120.65 253.5</b>	GND CON <b>134.0 275.8</b>	CLNC DEL <b>326.2</b>
------------------------	-------------------------------------	--------------------------------------	-------------------------------	--------------------------



NC-1, 26 DEC 2024 to 23 JAN 2025

NC-1, 26 DEC 2024 to 23 JAN 2025

## COPTER ONLY

EMERG SAFE ALT 100 NM 4700

3600 MIB R-305	JUSDU MIB 7	JOKPO 4	JOLBO R-112 7	ELEV 1666	TDZE 1646
TACAN	JULAM 1.7	2.9	3000		
3	2.3 NM		2400		
CATEGORY	COPTER				
H-292° *	2100/12	454	(500-¼)		

# COPTER TACAN 292°