

| | | | |
|--|------------------------|-----------------------------|---|
| WAAS CH 56531 W25A | APP CRS 249° | Rwy Idg TDZE Apt Elev | 5506 790 812 |
|--|------------------------|-----------------------------|---|

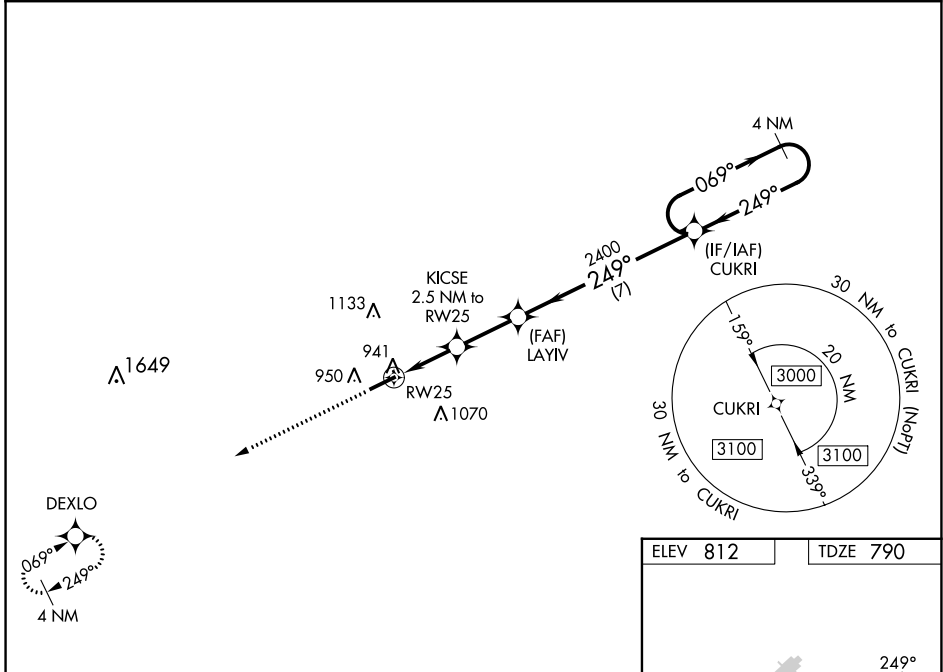
RNAV (GPS) RWY 25

CAPITAL CITY (F'T)

⚠ For uncompensated Baro-VNAV systems, LNAV/VNAV NA below -16°C (4°F) or above 54°C (130°F). DME/DME RNP-0.3 NA. When local altimeter setting not received, use Lexington altimeter setting and increase all LPV DA to 1160 feet and LNAV/VNAV DA to 1171 feet and all LPV visibilities ¼ mile, all LNAV/VNAV visibilities ⅓ mile; increase all MDAs 80 feet and visibility Cats C and D ¼ mile. VDP and Baro-VNAV NA with Lexington altimeter setting. Helicopter visibility reduction below ¾ SM NA.

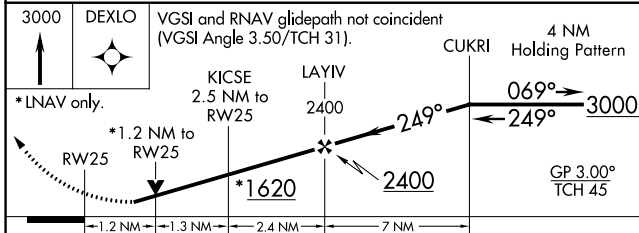
MISSED APPROACH:
Climb to 3000 direct DEXLO and hold.

| | | | |
|------------------------|--|---------------------------|---------------------------------|
| ASOS 119.275 | LEXINGTON APP CON 120.75 298.9 | CLNC DEL 118.65 | UNICOM 122.8 (CTAF) 0 |
|------------------------|--|---------------------------|---------------------------------|

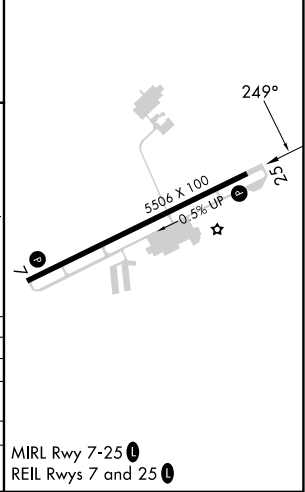


SE-1, 26 DEC 2024 to 23 JAN 2025

SE-1, 26 DEC 2024 to 23 JAN 2025



| | |
|----------|----------|
| ELEV 812 | TDZE 790 |
|----------|----------|



| | | | | |
|--------------|-----------------------|-----------------------|-------------------------|-----------------------|
| CATEGORY | A | B | C | D |
| LPV DA | 1098-1 | 308 (300-1) | | |
| LNAV/VNAV DA | 1109-1½ | 319 (300-1½) | | |
| LNAV MDA | 1200-1 | 410 (400-1) | 1200-1½ | 410 (400-1½) |
| CIRCLING | 1280-1 468 (500-1) | 1380-1 568 (600-1) | 1440-1¾ 628 (700-1¾) | 1440-2 628 (700-2) |

MIRL Rwy 7-25 0
REIL Rwy 7 and 25 0