

COPTER NDB RWY 34

LOM IL 278	APCH CRS 353°	Rwy Ldg TDZE Arpt Elev 910
----------------------	-------------------------	---

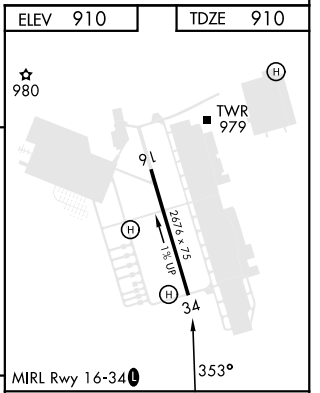
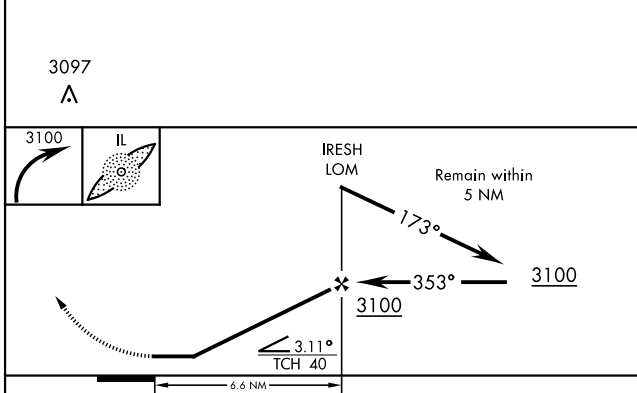
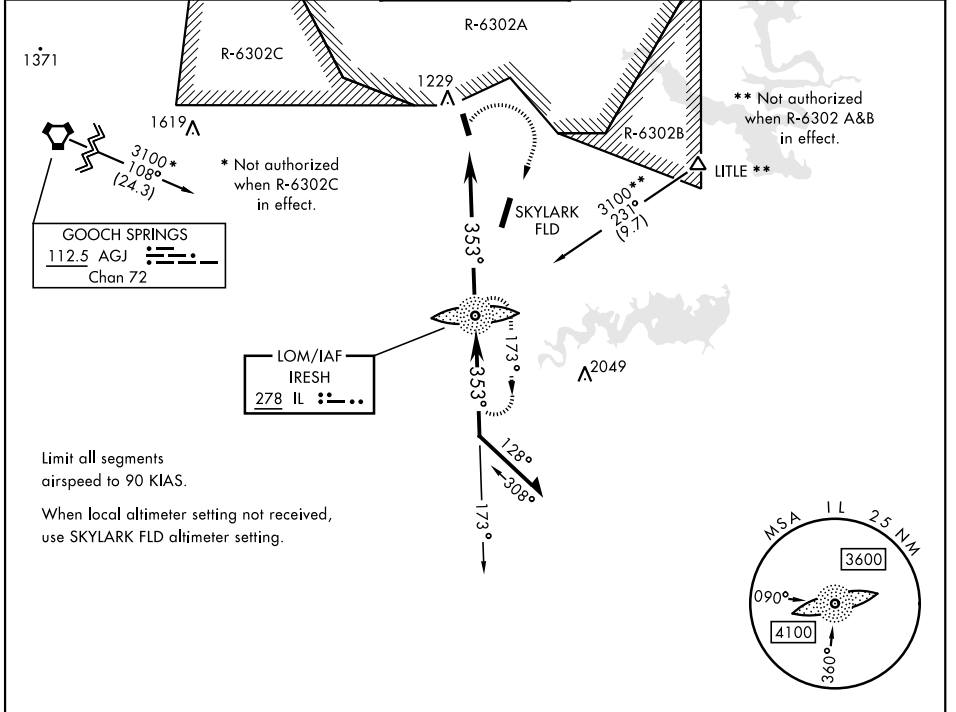
AL-5031 [USA]

YOAKUM DEFRENN AHP (KHLR)

RADAR required for missed approach.

MISSED APPROACH: Climbing right turn to 3100 direct IL LOM and hold.

ATIS★ 138.6	GRAY APP CON 120.075 323.15	TOWER★ 119.650 269.45	GND CON 133.85 225.4	CLNC DEL 225.4
-----------------------	---------------------------------------	---------------------------------	--------------------------------	--------------------------



CATEGORY	COPTER					FAF to MAP 6.6 NM					
S-34	1400-1	490	(500-1)			Knots	45	60	75	90	105
CIRCLING	1540-1	630	(700-1)			Min:Sec	8:48	6:36	5:17	4:24	3:46

COPTER NDB RWY 34

SC-3, 26 DEC 2024 to 23 JAN 2025

SC-3, 26 DEC 2024 to 23 JAN 2025