

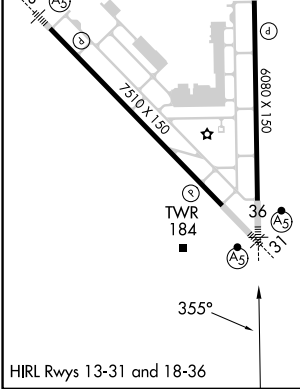
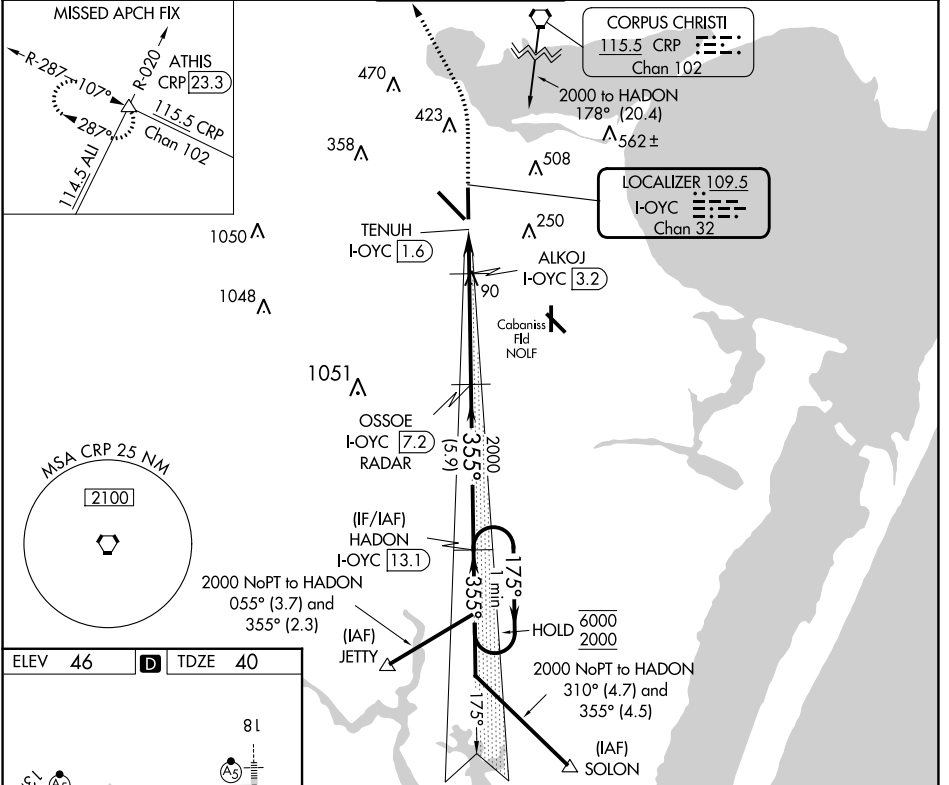
LOC/DME I-OYC 109.5 Chan 32	APP CRS 355°	Rwy Idg 6080 TDZE 40 Apt Elev 46
---	------------------------	---

ILS or LOC RWY 36

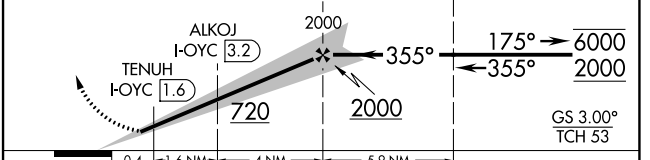
CORPUS CHRISTI INTL (CRP)

DME required. ▼ For inop ALS, increase S-ILS 36 Cat E visibility to RVR 4000 and S-LOC 36 Cat C/D/E visibility to RVR 4500.	MALSR 	MISSED APPROACH: Climb to 700 then climbing left turn to 2000 on heading 338° and CRP VORTAC R-287 to ATHIS INT/CRP 23.3 DME and hold.
--	-----------	--

ATIS 126.8	CORPUS APP CON 120.9 348.725	CORPUS TOWER 119.4 257.8	GND CON 121.9 269.15	CLNC DEL 118.55
----------------------	--	------------------------------------	--------------------------------	---------------------------



700	2000	CRP R-287	ATHIS	ILS unusable inside DA. LOC unusable within 1.6 DME.
↑	hdg 338°		△	
			OSSOE I-OYC 7.2 RADAR	HADON I-OYC 13.1 One Minute Holding Pattern



CATEGORY	A	B	C	D	E
S-ILS 36	240/24		200 (200-1/2)		
S-LOC 36	340/24 300 (300-1/2)				
CIRCLING	500-1 454 (500-1)	780-1 734 (800-1)	820-2 1/4 774 (800-2 1/4)	820-2 1/2 774 (800-2 1/2)	820-2 3/4 774 (800-2 3/4)

SC-3, 26 DEC 2024 to 23 JAN 2025

SC-3, 26 DEC 2024 to 23 JAN 2025