

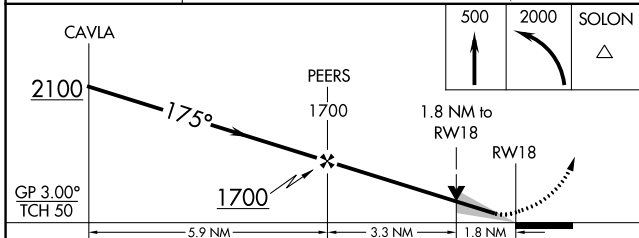
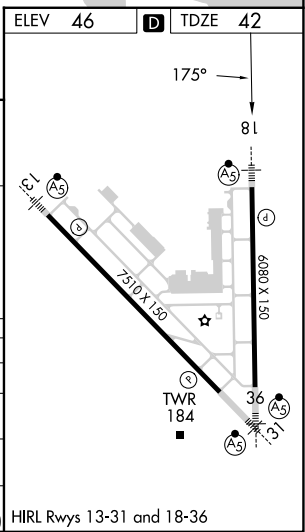
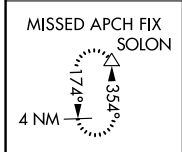
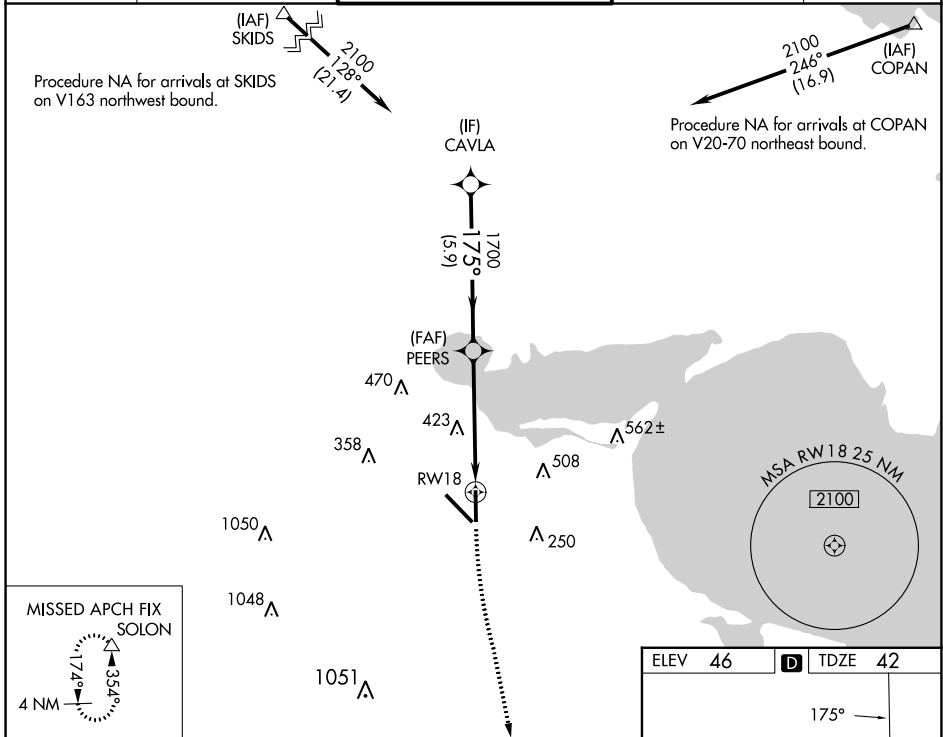
WAAS CH <b>53635</b> <b>W18A</b>	APP CRS <b>175°</b>	Rwy Idg <b>6080</b> TDZE <b>42</b> Apt Elev <b>46</b>
--	------------------------	---

# RNAV (GPS) RWY 18

CORPUS CHRISTI INTL (CRP)

RNP APCH - GPS.	MALSRL 	MISSED APPROACH: Climb to 500 then climbing left turn to 2000 direct SOLON and hold.
<p><b>⚠</b> For uncompensated Baro-VNAV systems, LNAV/VNAV NA below 1°C or above 54°C. For inop ALS, increase LPV Cat E visibility to 3/4 SM, all LNAV/VNAV visibilities to 2/3 SM, and LNAV Cat C, D, and E visibility to 1 3/4 SM.</p>		

ATIS <b>126.8</b>	CORPUS APP CON <b>120.9 348.725</b>	CORPUS TOWER <b>119.4 257.8</b>	GND CON <b>121.9 269.15</b>	CLNC DEL <b>118.55</b>
----------------------	--	------------------------------------	--------------------------------	---------------------------



CAVLA	2100	175°	PEERS	1700	500	2000	SOLON
GP 3.00° TCH 50		1700		1.8 NM to RWY 18		RWY 18	
5.9 NM		3.3 NM		1.8 NM			
CATEGORY	A	B	C	D	E		
LPV DA		242-1/2	200 (200-1/2)				
LNAV/VNAV DA		345-1/2	303 (300-1/2)				
LNAV MDA	660-1/2	618 (700-1/2)	660-1 3/8	618 (700-1 3/8)			
CIRCLING	660-1	780-1	820-2 1/4	820-2 1/2	820-2 3/4		
	614 (700-1)	734 (800-1)	774 (800-2 1/4)	774 (800-2 1/2)	774 (800-2 3/4)		

SC-3, 26 DEC 2024 to 23 JAN 2025

SC-3, 26 DEC 2024 to 23 JAN 2025