

WAAS CH 60914 W31A	APP CRS 312°	Rwy Idg 7510 TDZE 43 Apt Elev 46
--	------------------------	---

RNAV (GPS) Y RWY 31

CORPUS CHRISTI INTL (CRP)

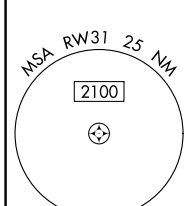
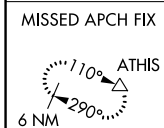
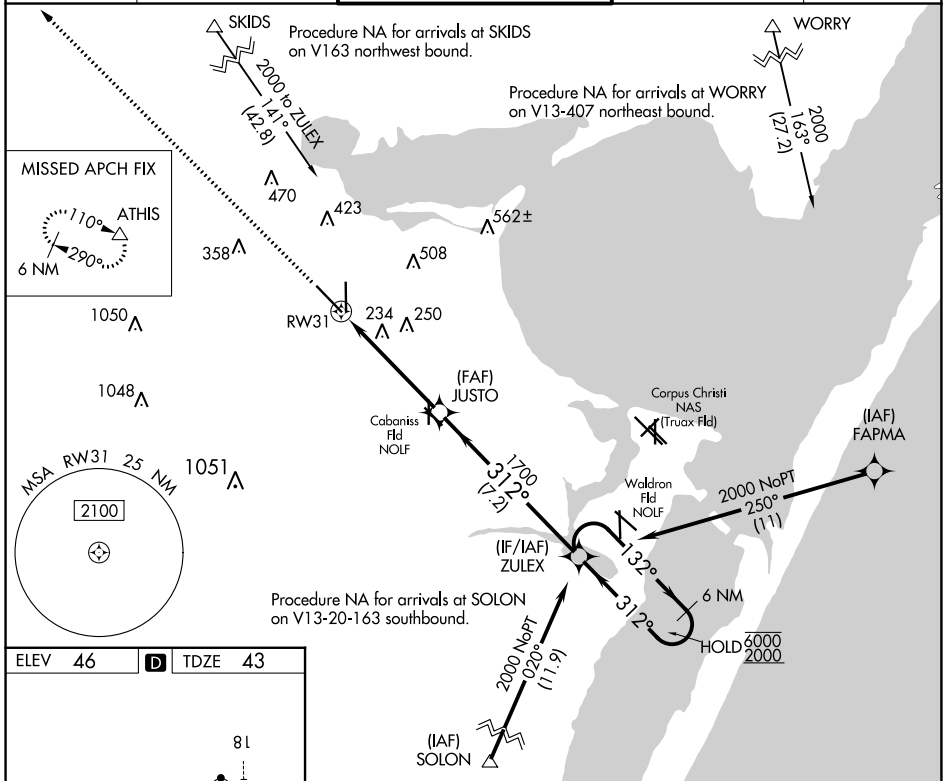
RNP APCH - GPS.

▼ For uncompensated Baro-VNAV systems, LNAV/VNAV NA below -1°C or above 54°C.
 ▲ Procedure NA when Cabaniss Fld traffic patterns active. For inop ALS, increase LPV Cat E visibility to 3/4 SM, LNAV/VNAV all Cats visibility to 3/8 SM, and LNAV Cat E visibility to 1 3/8 SM.

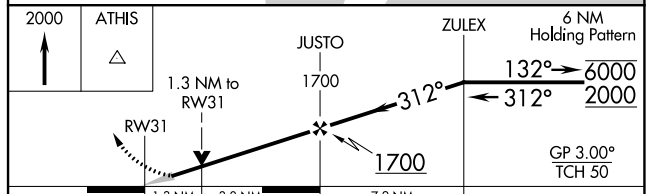
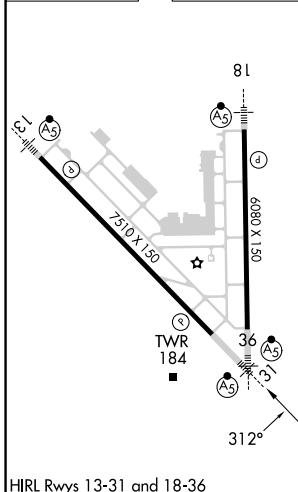


MISSED APPROACH:
Climb to 2000 direct
ATHIS and hold.

ATIS 126.8	CORPUS APP CON 120.9 348.725	CORPUS TOWER 119.4 257.8	GND CON 121.9 269.15	CLNC DEL 118.55
----------------------	--	------------------------------------	--------------------------------	---------------------------



ELEV 46	D	TDZE 43
---------	----------	---------



CATEGORY	A	B	C	D	E
LPV DA	243-1/2		200 (200-1/2)		
LNAV/VNAV DA	356-5/8		313 (400-3/8)		
LNAV MDA	500-1/2 457 (500-1/2)		500-7/8 457 (500-7/8)		
C CIRCLING	500-1 454 (500-1)	780-1 734 (800-1)	820-2 1/4 774 (800-2 1/4)	820-2 1/2 774 (800-2 1/2)	820-2 3/4 774 (800-2 3/4)

SC-3, 26 DEC 2024 to 23 JAN 2025

SC-3, 26 DEC 2024 to 23 JAN 2025