

WAAS CH <b>45718</b> W03A	APP CRS <b>031°</b>	Rwy Idg TDZE Apt Elev	<b>8800</b> <b>7014</b> <b>7014</b>
---------------------------------	------------------------	-----------------------------	---

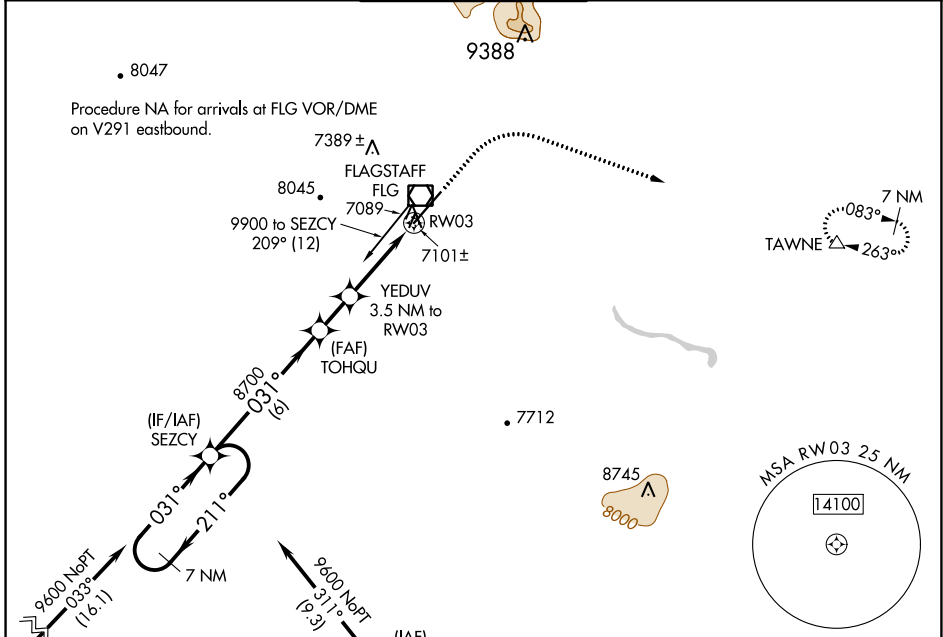
# RNAV (GPS) RWY 3

FLAGSTAFF PULLIAM (FLG)

**⚠** For uncompensated Baro-VNAV systems, LNAV/VNAV NA below -19°C (-2°F) or above 44°C (112°F).  
DME/DME RNP-0.3 NA.

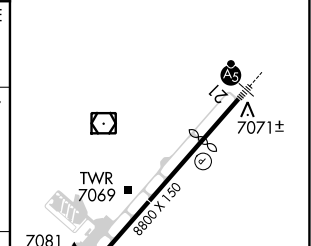
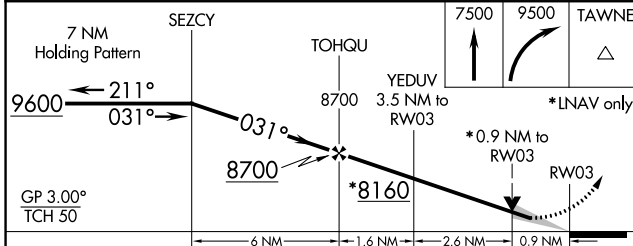
MISSED APPROACH: Climb to 7500 then climbing right turn to 9500 direct TAWNE and hold.

ATIS <b>125.8</b>	PHOENIX APP CON <b>126.375 236.775</b>	FLAGSTAFF TOWER ★ <b>134.55 (CTAF) 0 239.25</b>	GND CON <b>121.9</b>	UNICOM <b>122.95</b>
----------------------	---	--	-------------------------	-------------------------

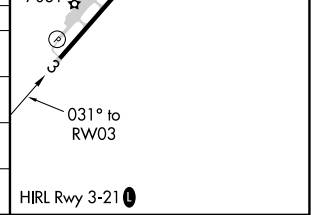


(IF/IAF) JUWSO	(IF/IAF) SEZCY	(FAF) TOHQU	(IAF) OATES
----------------	----------------	-------------	-------------

ELEV 7014	<b>D</b> TDZE 7014
-----------	--------------------



CATEGORY	A	B	C	D
LPV DA		7264-3/4	250 (300-3/4)	
LNAV/VNAV DA		7282-7/8	268 (300-7/8)	
LNAV MDA		7360-1	346 (400-1)	
<b>C</b> CIRCLING	7520-1 506 (600-1)	7560-1 546 (600-1)	8100-3 1086 (1100-3)	8560-3 1546 (1600-3)



SW-4, 26 DEC 2024 to 23 JAN 2025

SW-4, 26 DEC 2024 to 23 JAN 2025