

WAAS CH <b>99413</b> <b>W18A</b>	APP CRS <b>179°</b>	Rwy Idg <b>6413</b> TDZE <b>8</b> Apt Elev <b>9</b>
--	------------------------	---

# RNAV (GPS) RWY 18

HOUMA-TERREBONNE (HUM)

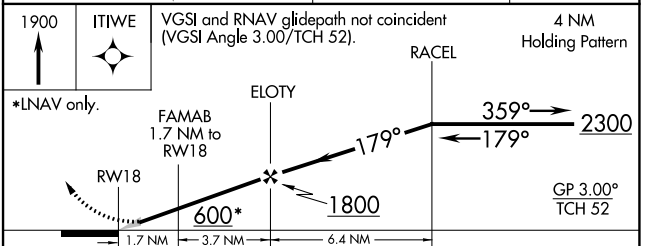
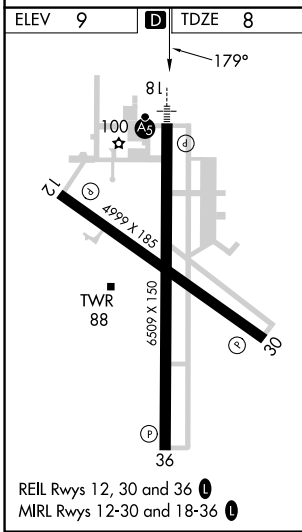
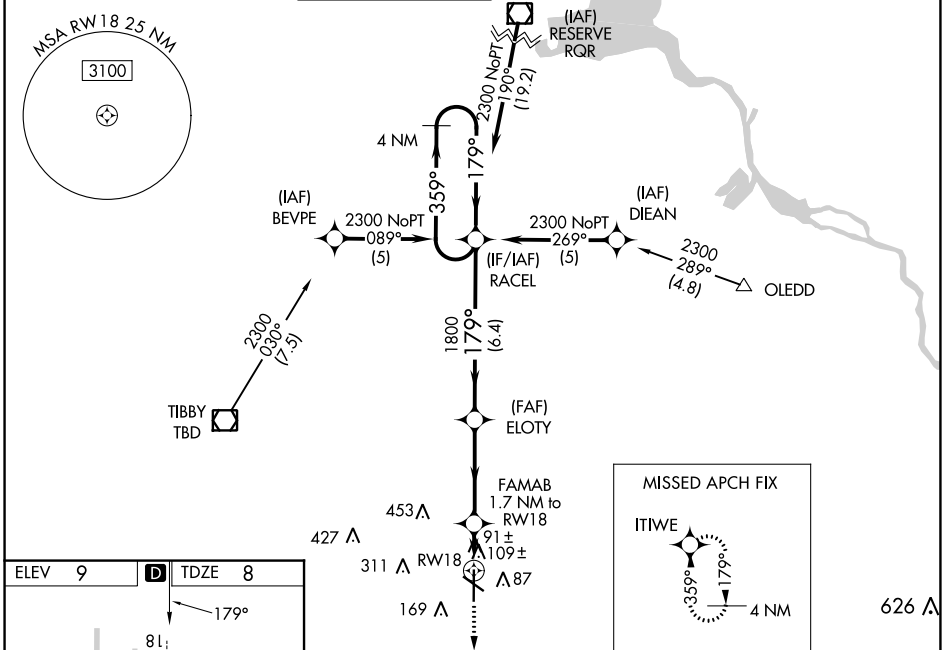
**⚠** Baro-VNAV NA when using Louis Armstrong New Orleans Intl altimeter setting. For uncompensated Baro-VNAV systems, LNAV/VNAV NA below -15°C (5°F) or above 49°C (120°F). DME/DME RNP-0.3 NA. When local altimeter setting not received, use Louis Armstrong New Orleans Intl altimeter setting: increase LPV DA to 285, increase LNAV/VNAV DA to 526 and all visibilities ½ SM; increase all MDAs 80 feet and visibility Cats C and D ¼ SM. For inop ALS when using Louis Armstrong New Orleans Intl altimeter setting increase all LPV visibilities to ¾ SM, increase all LNAV/VNAV visibilities and LNAV Cats C and D visibility to 1 ¾ SM.

MALSR



**MISSED APPROACH:**  
Climb to 1900 direct ITIWE and hold.

ATIS <b>120.25</b>	NEW ORLEANS APP CON <b>118.9 350.35</b>	HOUMA TOWER ★ <b>125.3 (CTAF) 346.3</b>	GND CON <b>123.875</b>	CLNC DEL <b>118.9</b> (When twr closed)	UNICOM <b>122.95</b>
-----------------------	--	--	---------------------------	---	-------------------------



CATEGORY	A	B	C	D
LPV DA		208-½	200 (200-½)	
LNAV/VNAV DA		449-¾	441 (500-¾)	
LNAV MDA	440-½	432 (500-½)	440-¾	432 (500-¾)
<b>C</b> CIRCLING	480-1	471 (500-1)	760-2¼ 751 (800-2¼)	760-2½ 751 (800-2½)

SC-4, 26 DEC 2024 to 23 JAN 2025

SC-4, 26 DEC 2024 to 23 JAN 2025