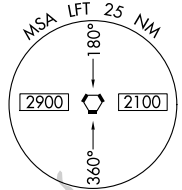
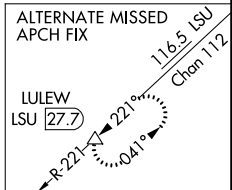
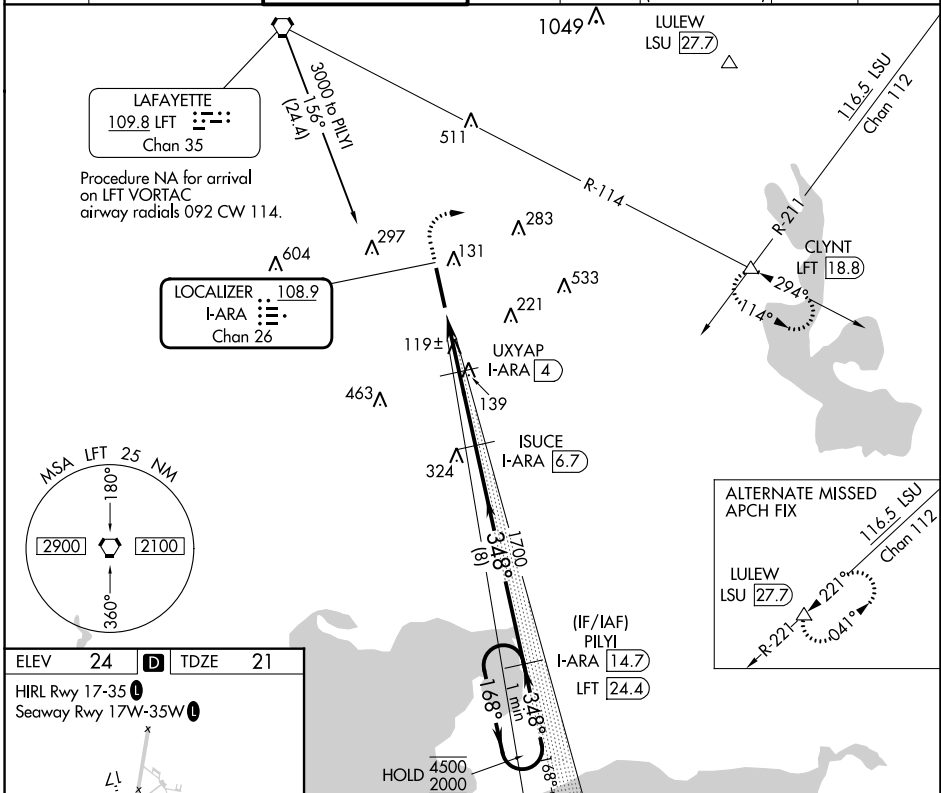


LOC/DME I-ARA 108.9 Chan 26	APP CRS 348°	Rwy Idg 8002 TDZE 21 Apt Elev 24
-------------------------------------------------	------------------------	-------------------------------------------------------------

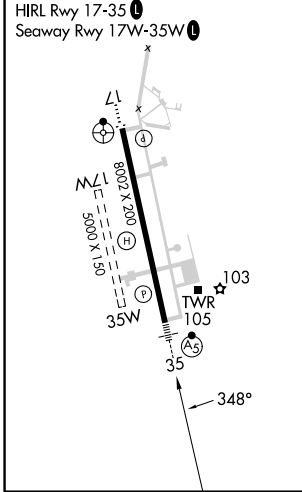
ILS or LOC RWY 35

ACADIANA RGNL (A.R.A.)

DME required for procedure entry. DME required for LOC only.					MALSR AS	MISSED APPROACH: Climb to 800 then climbing right turn to 2000 on heading 080° and LFT R-114 to CLYNT INT/LFT 18.8 DME and hold.		
<p>▼ Circling NA to Rwy's 17W and 35W. For inop ALS increase S-ILS 35 ▲ Cat E visibility to ¾ SM and S-LOC 35 Cats C/D/E visibility to 1 ½ SM.</p>								
ASOS 133.325	LAFAYETTE APP CON* 121.1 268.7	ACADIANA TOWER* 125.0 (CTAF) 239.3	GND CON 121.7	CLNC DEL 121.7	CLNC DEL 118.05 (when twr closed)	UNICOM 122.95	122.7	



ELEV 24	D	TDZE 21
----------------	----------	----------------



800	2000	LFT R-114	CLYNT	ISUCE I-ARA (6.7)	PLYI I-ARA (14.7)	One Minute Holding Pattern
*LOC only.				1700	168° → 4500	← 348° 2000
I-ARA (1.6)	*I-ARA (2.6)	UXYAP I-ARA (4)	348°	1700	GS 3.00° TCH 5T	
-1 NM		-1.4 NM		-2.7 NM		-8 NM
CATEGORY	A	B	C	D	E	
S-ILS 35	221-½					200 (200-½)
S-LOC 35	440-½ 419 (500-½)		440-¾ 419 (500-¾)			
C CIRCLING	440-1 416 (500-1)	480-1 456 (500-1)	600-1½ 576 (600-1½)	680-2 656 (700-2)	900-3 876 (900-3)	

ACADIANA RGNL (A.R.A.)

ILS or LOC RWY 35

SC-4, 26 DEC 2024 to 23 JAN 2025

SC-4, 26 DEC 2024 to 23 JAN 2025