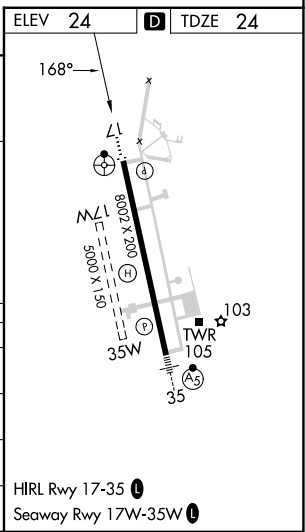
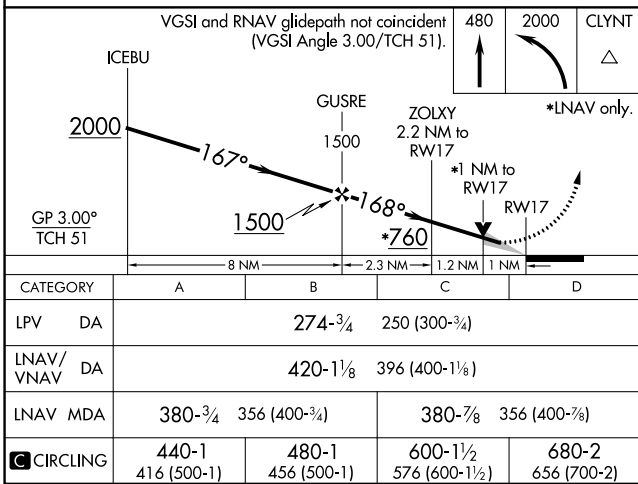
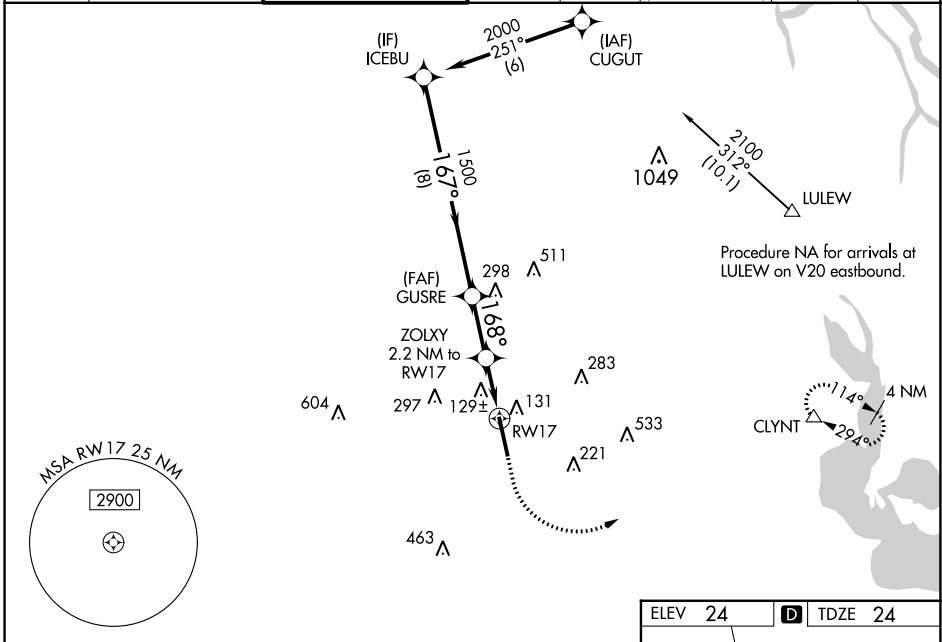


WAAS CH <b>82501</b> <b>W17A</b>	APP CRS <b>168°</b>	Rwy Idg <b>8002</b> TDZE <b>24</b> Apt Elev <b>24</b>
--	------------------------	---

# RNAV (GPS) RWY 17

ACADIANA RGNL (A.R.A.)

RNP APCH.				ODALS		MISSED APPROACH: Climb to 480 then climbing left turn to 2000 direct CLYNT and hold.	
▼ Circling NA to Rwys 17W and 35W. Inop table does not apply to LPV. For inop ALS, increase LNAV/VNAV all Cats visibility to 1½ SM and LNAV Cats C/D visibility to 1 SM. For uncompensated Baro-VNAV systems, LNAV/VNAV NA below -3°C or above 54°C.				CLNC DEL <b>118.05</b> (when twr closed)		UNICOM <b>122.95</b>	
ASOS <b>133.325</b>	LAFAYETTE APP CON* <b>121.1 268.7</b>	ACADIANA TOWER* <b>125.0 (CTAF) 239.3</b>	GND CON <b>121.7</b>	CLNC DEL <b>121.7</b>			



SC-4, 26 DEC 2024 to 23 JAN 2025

SC-4, 26 DEC 2024 to 23 JAN 2025