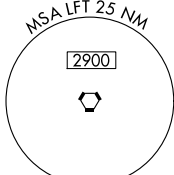
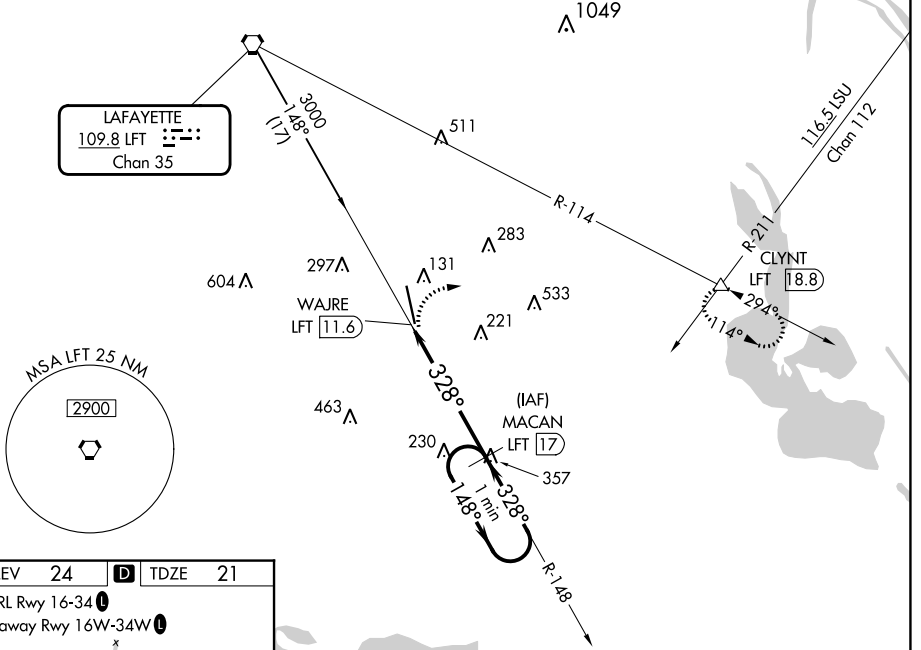


VORTAC LFT 109.8	APP CRS 328°	Rwy Idg TDZE Apt Elev	8002 21 24
Chan 35			

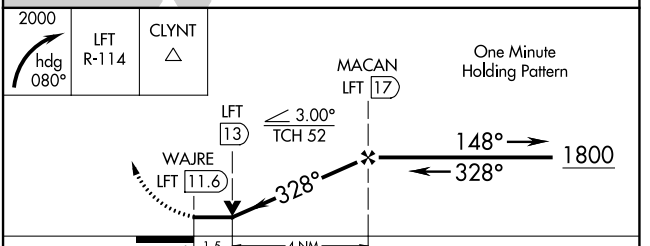
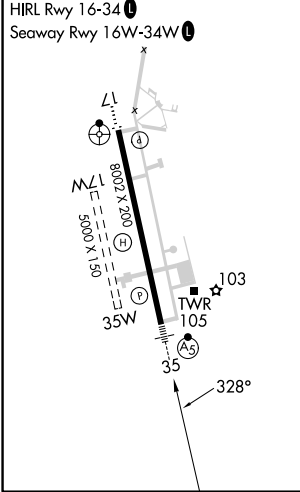
VOR RWY 35
ACADIANA RGNL (A.R.A.)

<p>Circling NA to Rwy's 17W and 35W. DME required. Inop table does not apply.</p>		<p>MALS</p>	<p>MISSED APPROACH: Climbing right turn to 2000 on heading 080° and LFT R-114 to CLYNT INT/LFT 18.8 DME and hold.</p>				
ASOS 133.325	LAFAYETTE APP CON * 121.1 268.7	ACADIANA TOWER * 125.0 (CTAF) 239.3	GND CON 121.7	CLNC DEL 121.7	CLNC DEL 118.05 (when twr closed)	UNICOM 122.95	122.7

DME REQUIRED



ELEV 24	D	TDZE 21
---------	----------	---------



CATEGORY	A	B	C	D	E
S-35	540-1/2	519 (600-1/2)	540-1 3/8	519 (600-1 3/8)	
C CIRCLING	540-1	516 (600-1)	600-1 1/2 576 (600-1 1/2)	680-2 656 (700-2)	900-3 876 (900-3)

SC-4, 26 DEC 2024 to 23 JAN 2025

SC-4, 26 DEC 2024 to 23 JAN 2025